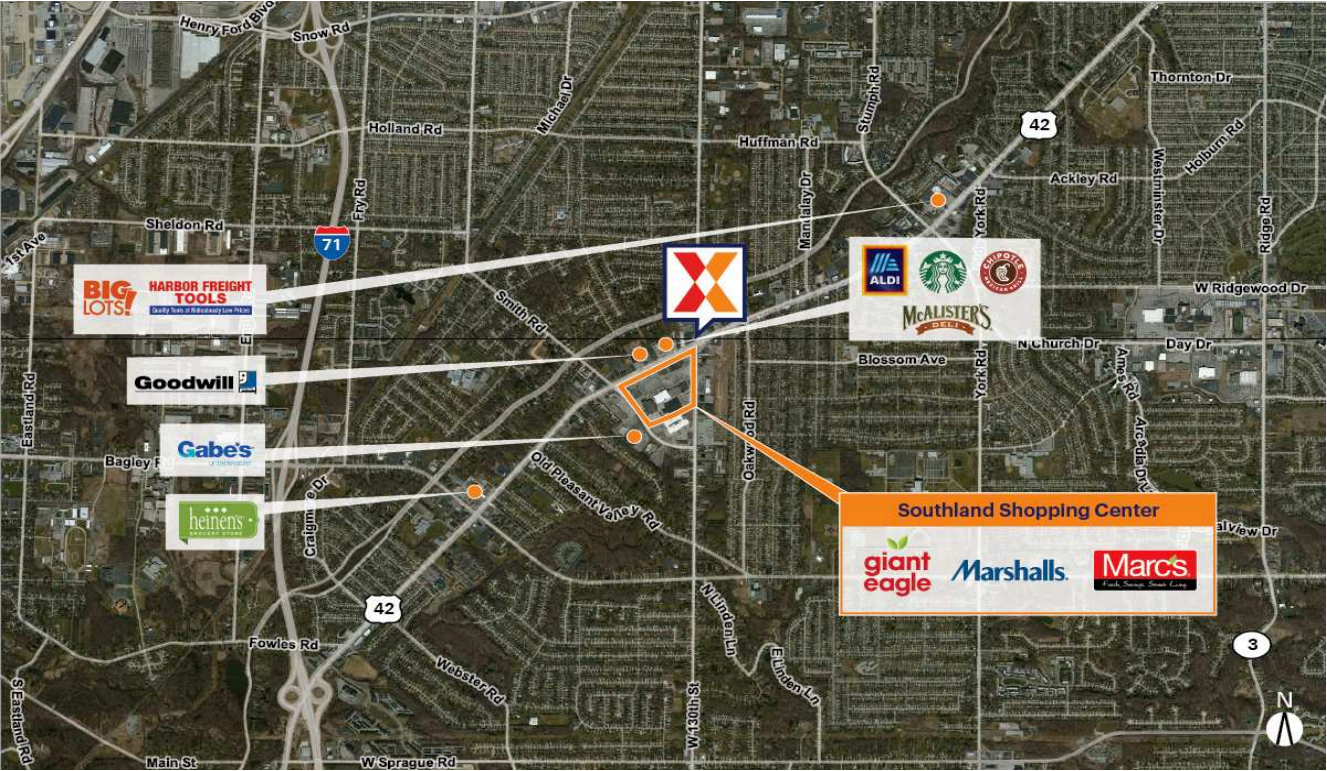


Southland Shopping Center

Cleveland, OH

41.3777, -81.7877
6944 W 130th Street | Middleburg Heights, OH 44130



Center Size: 582,492 SF



| Demographics | 1 Mile | 3 Mile | 5 Mile |
|------------------|----------|----------|----------|
| Population | 9,443 | 84,684 | 222,621 |
| Households | 3,981 | 37,312 | 97,191 |
| Household Income | \$81,750 | \$83,987 | \$83,667 |

High-traffic power center dual-anchored by Giant Eagle and Marc's Grocery that features a strong lineup of national retailers including Marshalls, Petco, Five Below, Crunch Fitness, and Bath & Body Works, drawing an estimated 4.6M annual visits (Placer.ai 2024)

Surrounded by a dense population of 84K+ residents within a 3-mile radius

Highly visible to 26K+ vehicles daily along Pearl Rd and 16K+ vehicles daily on W 130th St

Southland Shopping Center

Cleveland, OH

41.3777, -81.7877

6944 W 130th Street | Middleburg Heights, OH 44130



Available Space

| | |
|-------|-----------|
| ATM | 1,176 SF |
| OPO 1 | 0 SF |
| OPO 2 | 0 SF |
| 2A | 29,887 SF |
| 03 | 4,700 SF |
| 04 | 2,000 SF |
| 05 | 3,220 SF |
| 07 | 6,095 SF |
| 10 | 1,560 SF |
| 19 | 990 SF |
| 22B | 1,584 SF |
| 25 | 1,933 SF |
| 27 | 2,263 SF |
| 28 | 5,400 SF |
| 36 | 1,500 SF |
| 39 | 2,750 SF |
| 41C | 17,700 SF |

Current Retailers

| | | | | | |
|--------|-------------------------------|------------|-----|--------------------------------------|-----------|
| FS1 | Einstein Bros. Bagels | 2,592 SF | 22 | Verizon Wireless | 1,756 SF |
| FS2 | Applebee's | 5,777 SF | 22A | Charley's Philly Steaks & Wings | 1,450 SF |
| Kiosk | Southland Key Shop | 121 SF | 23 | Emergency Dental of Cleveland | 2,400 SF |
| N.A.P. | BJ's Wholesale Club | 109,309 SF | 24 | Great Clips | 1,512 SF |
| 01 | LensCrafters | 5,807 SF | 26 | Marc's Grocery | 73,856 SF |
| 06 | Eagle Loan | 3,360 SF | 29 | Cato | 4,000 SF |
| 08 | Dollar Tree | 11,500 SF | 29A | Messing-Kramer Dental Group | 5,691 SF |
| 09 | Mr. Hero | 2,940 SF | 30 | Bath & Body Works | 3,240 SF |
| 11 | Tease Salon | 1,720 SF | 31 | Tandy Leather | 3,000 SF |
| 12 | Sally Beauty Supply | 1,880 SF | 33A | Giant Eagle | 86,239 SF |
| 13 | Five Below | 14,151 SF | 37 | Miracle-Ear | 1,000 SF |
| 14 | Uptempo Dance Studio | 1,420 SF | 38 | America's Best Contacts & Eyeglasses | 3,750 SF |
| 15A | Crunch Fitness | 27,900 SF | 40 | Petco | 12,000 SF |
| 16 | Third Federal S/L Association | 6,276 SF | 41 | Marshalls | 28,004 SF |
| 18 | Pierogies of Cleveland | 990 SF | 41A | OfficeMax | 20,936 SF |
| 20 | Bank of America | 1,650 SF | 47 | Signature Hair Salon | 1,487 SF |
| 21 | A&G Nails | 935 SF | | | |

5237