

WHY NAPERVILLE?

- #1 CHICAGO SUBURB IN TOTAL RETAIL & RESTAURANT SALES
- #2 BEST PLACES TO LIVE IN THE U.S.
- #3 BEST CITIES FOR YOUNG FAMILIES
- #4 SAFEST CITIES IN AMERICA
- TOP PUBLIC SCHOOLS IN THE STATE OF ILLINOIS

DEMOGRAPHICS WITHIN 15 MIN DRIVE RADIUS

TOTAL POPULATION:	410,415
TOTAL WORKERS:	202,618
TOTAL HOUSEHOLDS:	138,265
MEDIAN HH INCOME:	\$101,210



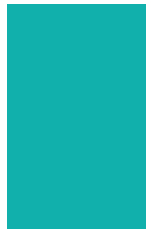
COMING TO
CHICAGOLAND



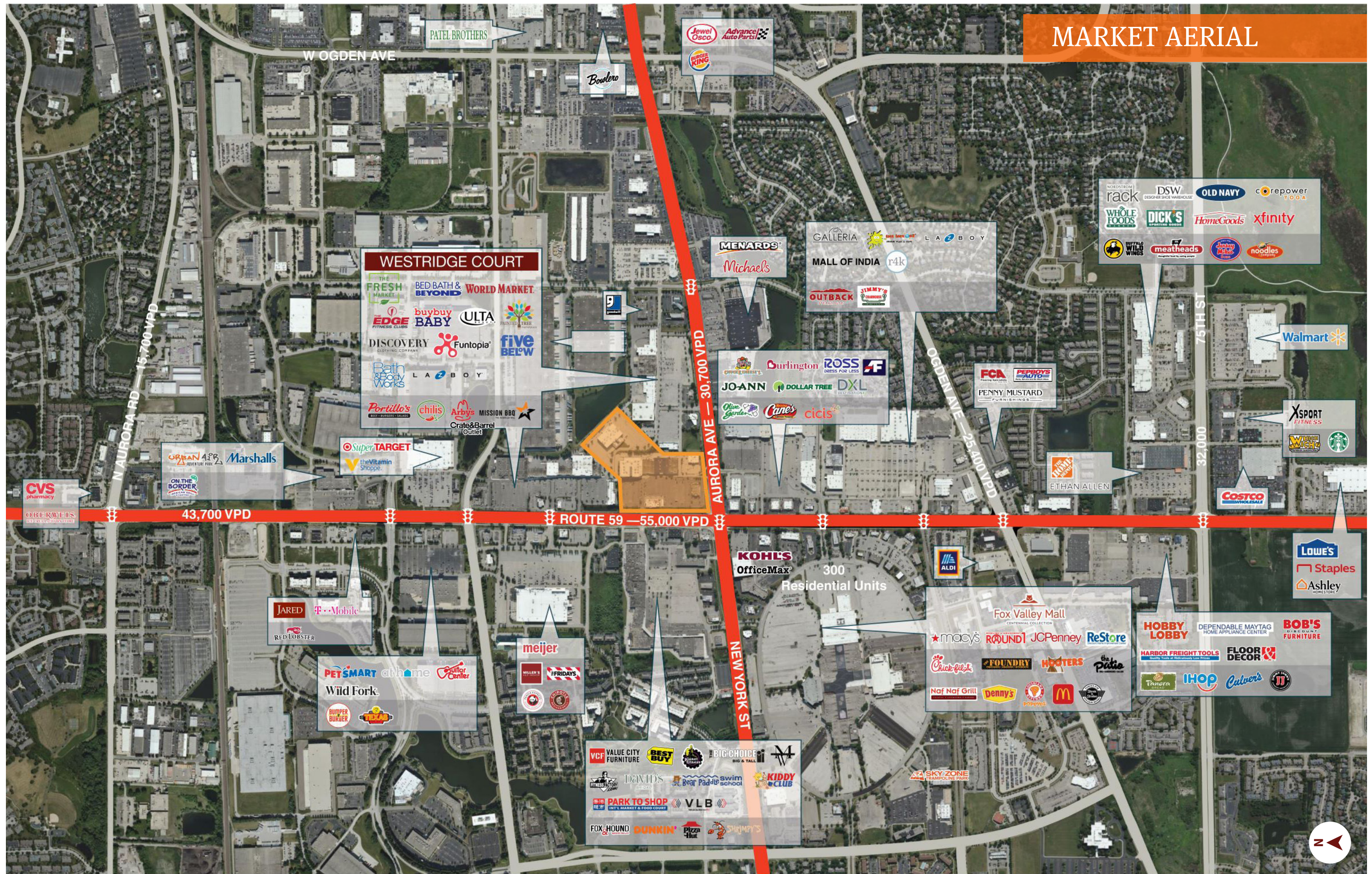
ELEVATING EXPERIENCES

Block 59 will be a new, next-gen destination just minutes from Downtown Naperville designed to leverage new entertainment-focused experiences. With over 130,000 SF of prime and architecture-rich retail, entertainment & restaurant space, Block 59 vows to offer mixed-use activities for everyone, every day, every time.

2024
DELIVERY



MARKET AERIAL

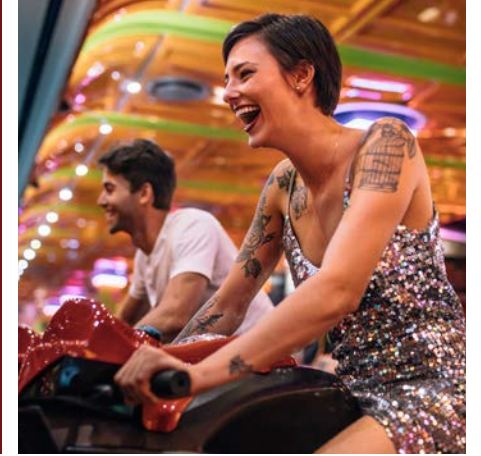






NEXT
LEVEL

DINING & ENTERTAINMENT



OVER
130,000 SF
OF DINING,
ENTERTAINMENT AND
EXPERIENTIAL RETAIL



A DINING & ENTERTAINMENT EXPERIENCE



TOTAL GLA: ± 192,000 SF
TOTAL PARKING: ± 1,650 SPACES (8.5/1000)

ANCHORS

HOLLYWOOD PALMS (7 SCREENS) ± 50,000 SF EXISTING/OPEN (PLANNED REMODEL)

EVENT PLAZA

SPACE/PREMISE	SIZE	STATUS
BUILDING A	± 7,500 SF	AT LEASE
BUILDING B	± 8,000 SF	LOI
BUILDING C	± 8,300 SF	LOI
BUILDING D	± 8,500 SF	AT LEASE
BUILDING E	± 1,650 SF	AVAILABLE
BUILDING F		
SPACE 1A	± 3,500 SF	LOI
SPACE 1B	± 1,500 SF	LOI
SPACE 2	± 2,200 SF	AT LEASE
SPACE 3	± 2,800 SF	AT LEASE

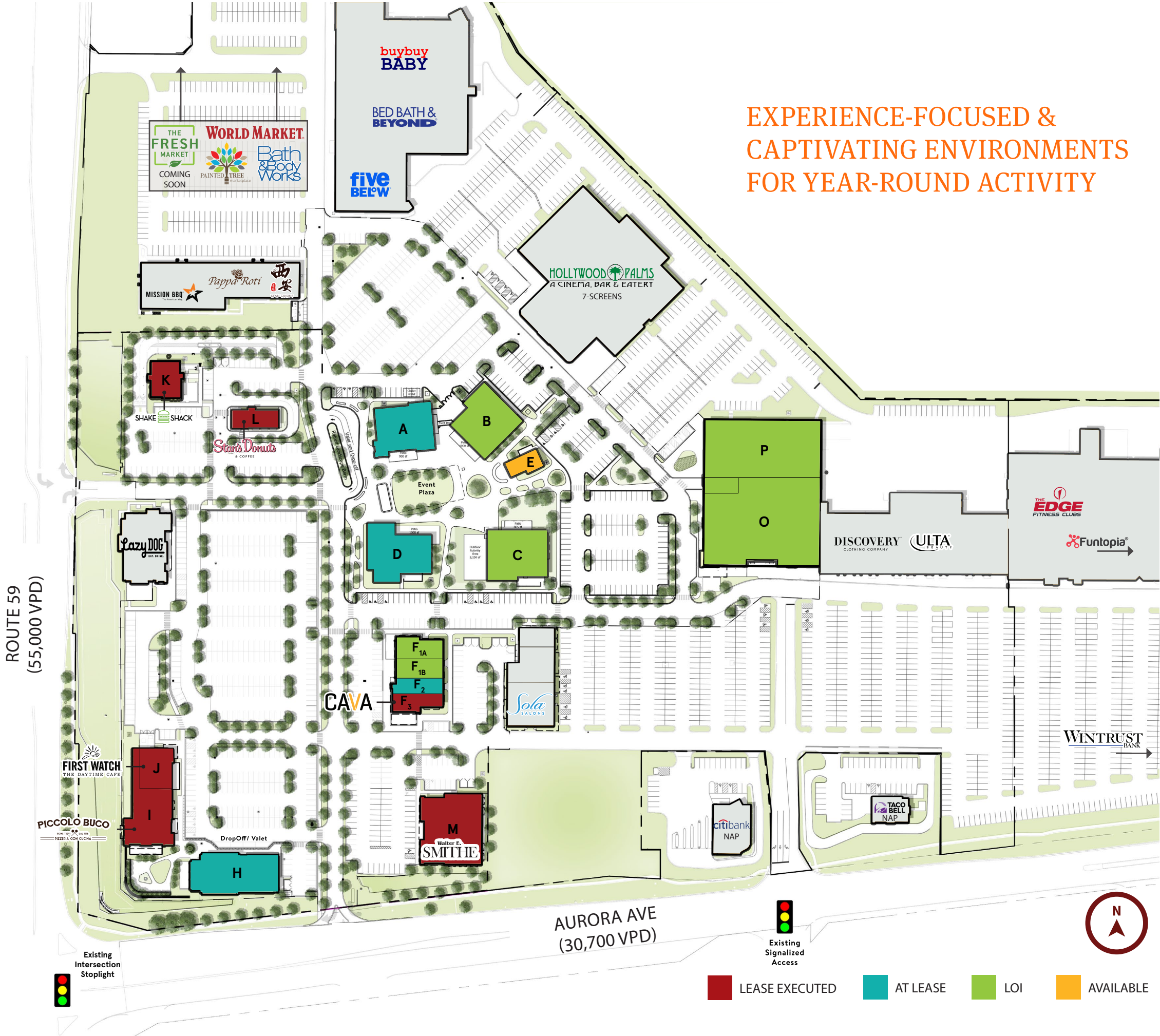
OUTLOTS

SPACE/PREMISE	SIZE	STATUS
BUILDING K	± 3,450 SF	LEASE EXECUTED
BUILDING L	± 2,000 SF	LEASE EXECUTED
SPACE J	± 4,050 SF	LEASE EXECUTED
SPACE I	± 7,495 SF	LEASE EXECUTED
BUILDING H	± 10,000 SF	AT LEASE
BUILDING M	± 12,272 SF	LEASE EXECUTED
LAZY DOG	± 8,000 SF	EXISTING/OPEN

ENTERTAINMENT

SPACE/PREMISE	SIZE	STATUS
SPACE O	± 30,000 SF	LOI
SPACE P	± 20,000 SF	LOI
O/P COMBINED	± 50,000 SF	

EXPERIENCE-FOCUSED & CAPTIVATING ENVIRONMENTS FOR YEAR-ROUND ACTIVITY





PREMIER
RESTAURANTS &
PERSONAL
SERVICES



FESTIVAL
& LAWN



2021 HOUSEHOLDS BY INCOME/EDUCATION



63% OF HOUSEHOLDS EARN \$75K+



51% OF HOUSEHOLDS EARN \$100K+



30% OF RESIDENTS HOLD A BACHELORS DEGREE



22% OF RESIDENTS HOLD A GRADUATE OR PROFESSIONAL DEGREE



2021 POPULATION BY RACE

WHITE

64%

HISPANIC

26%

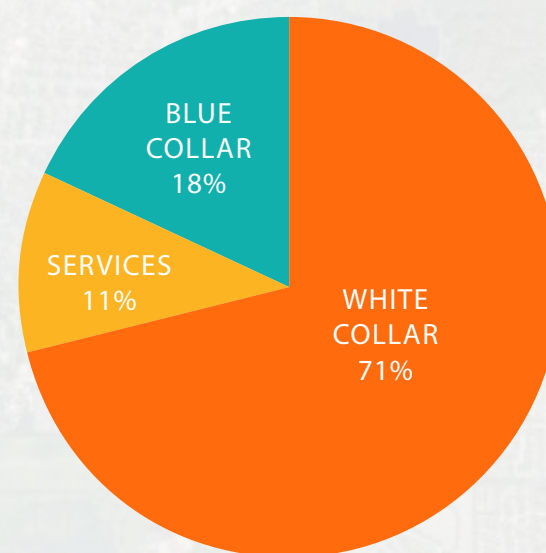
ASIAN

14%

BLACK

8%

2021 POPULATION BY OCCUPATION



LARGE EMPLOYERS

NALCO Water
An Ecolab Company

1,000 EMPLOYEES

Edward-Elmhurst
HEALTH

2,585 EMPLOYEES

Rush-Copley

1,736 EMPLOYEES

Nicor Gas

700 EMPLOYEES



A NEW DESTINATION
OF NEXT LEVEL ENTERTAINMENT
IS COMING TO CHICAGOLAND





BRAD RATAJCZAK

847.562.4130

brad.ratajczak@brixmor.com

BRIAN ADAMS

630.954.7512

badams@midamericagr.com

STEVE FRISHMAN

630.954.7325

sfrishman@midamericagr.com

DAVID ORKIN

484.567.2828

david.orkin@cbre.com

BRIXMOR[®]
Property Group

 **MID-AMERICA**[®]

CBRE