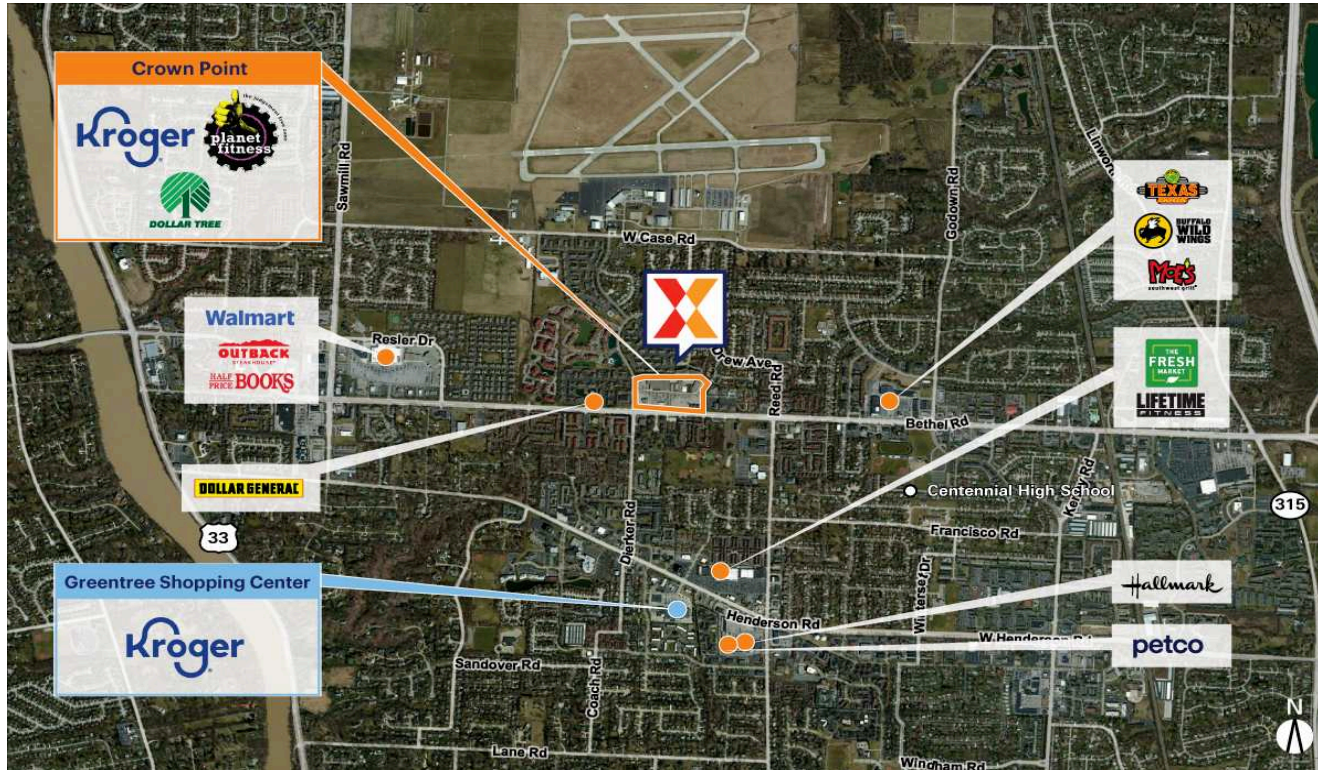


# Crown Point

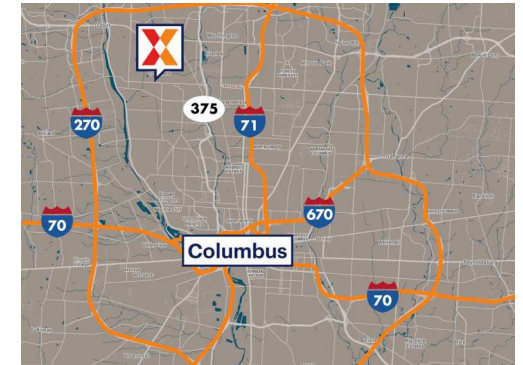
Columbus, OH

40.0654, -83.0726

2002-2009 Crown Plaza Drive | Columbus, OH 43235



Center Size: 145,280 SF



| Demographics | 1 Mile   | 3 Mile    | 5 Mile    |
|--------------|----------|-----------|-----------|
|              | 14,157   | 100,183   | 267,607   |
|              | 6,963    | 44,715    | 116,037   |
|              | \$99,405 | \$124,468 | \$128,674 |

Surrounded by a dense and affluent population of 100K+ residents with an average household income of \$124K+ within a 3-mile radius

Conveniently located on Bethel Rd with 29K+ vehicles daily and in close proximity to Hwy 315 (Kalibrate 2021)

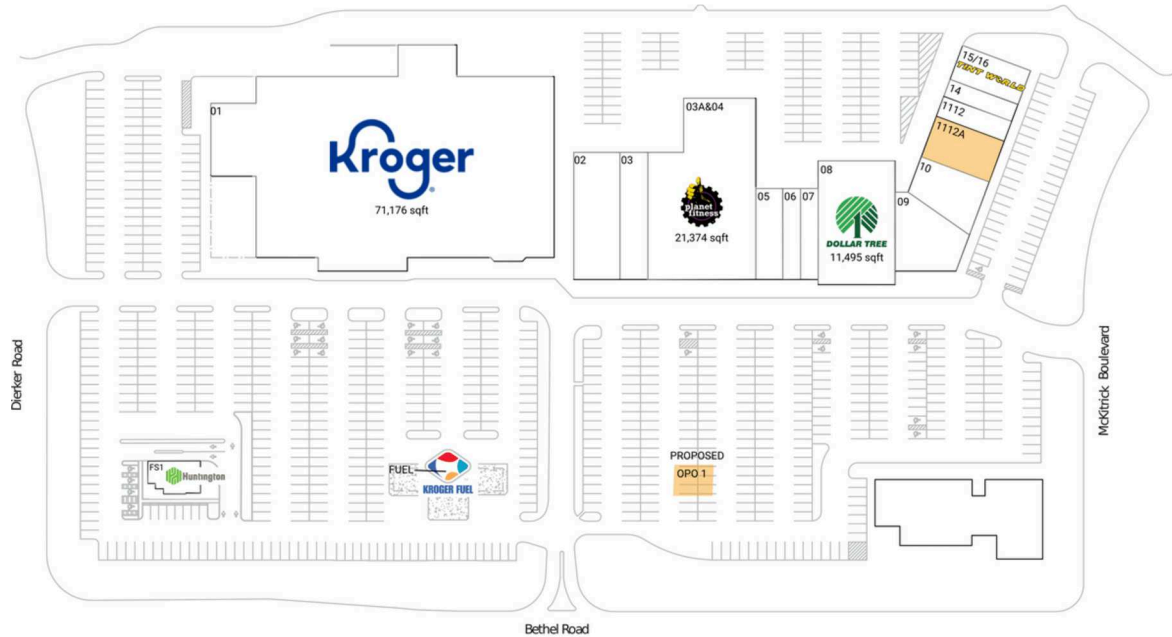
Kroger-anchored center with national retailers including Dollar Tree and Planet Fitness

# Crown Point

Columbus, OH

40.0654, -83.0726

2002-2009 Crown Plaza Drive | Columbus, OH 43235



## Available Space

|       |          |
|-------|----------|
| OPO 1 | 0 SF     |
| 1112A | 3,612 SF |

## Current Retailers

|        |                           |           |
|--------|---------------------------|-----------|
| FS1    | Huntington National Bank  | 3,000 SF  |
| FUEL   | Kroger Fuel Center        | 117 SF    |
| 01     | Kroger                    | 71,176 SF |
| 02     | Classy Nails 2/SenBrows   | 7,000 SF  |
| 03     | MG Choreography           | 4,340 SF  |
| 03A&04 | Planet Fitness            | 21,374 SF |
| 05     | Cafe Elena                | 3,000 SF  |
| 06     | Luna Pizza Kitchen        | 2,000 SF  |
| 07     | Aquatic Adventures Ohio   | 2,000 SF  |
| 08     | Dollar Tree               | 11,495 SF |
| 09     | Hunan Lion                | 6,000 SF  |
| 10     | Sudanese Community Center | 3,040 SF  |
| 14     | Wine & Canvas             | 1,600 SF  |
| 15/16  | Tint World                | 3,200 SF  |
| 1112   | Jazzercise                | 2,094 SF  |



1705