

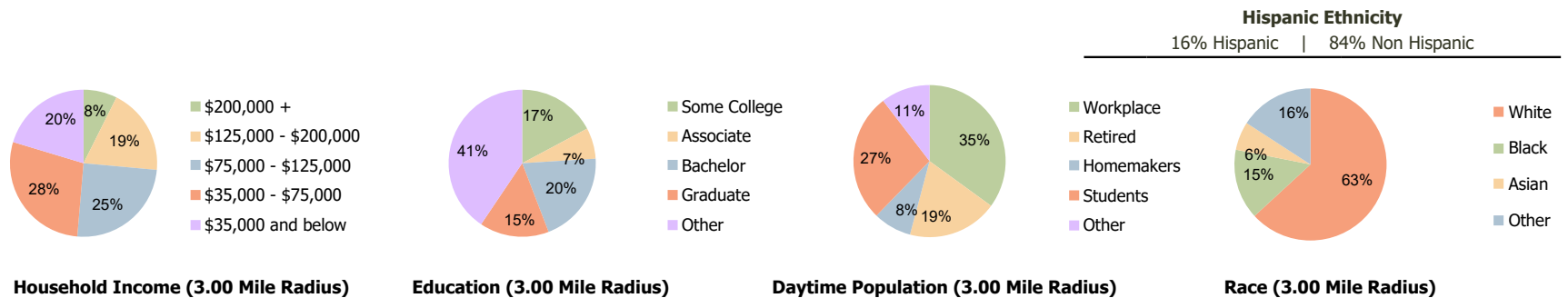
Colonial Commons Orange, CT	1.00 Mile Radius	3.00 Mile Radius	5.00 Mile Radius
--------------------------------	------------------	------------------	------------------

Current Year Demographics

Current Population	3,031	64,279	158,393
Total Daytime Pop	6,337	63,604	204,556
Workplace Pop	4,152	22,260	99,518
Average Household Income	\$109,042	\$101,087	\$98,119
Average Disposable Income	\$82,597	\$77,266	\$73,835
Total Households	1,235	24,981	63,353
Median Home Value	\$463,785	\$366,416	\$380,405
College (4+)	45.4%	35.4%	37.3%
Total Consumer Spending/Capita (Weekly)	\$449	\$446	\$438
Population per Household	2.13	2.01	2.47
% of Households with Children	21.1%	27.3%	25.3%

2028 Demographic Projections

Projected Population	3,145	64,443	161,100
Projected 5 Year Annual Growth Rate (Pop)	0.7%	0.1%	0.3%



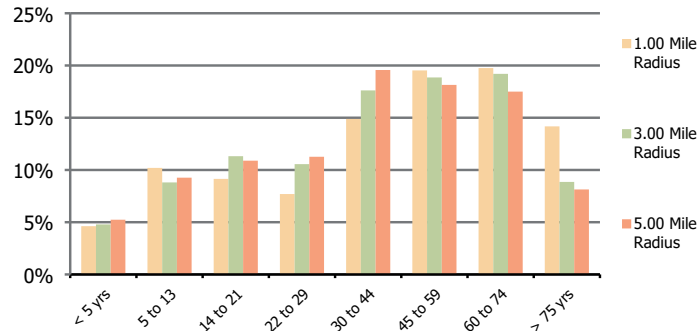


Demographic Summary Report

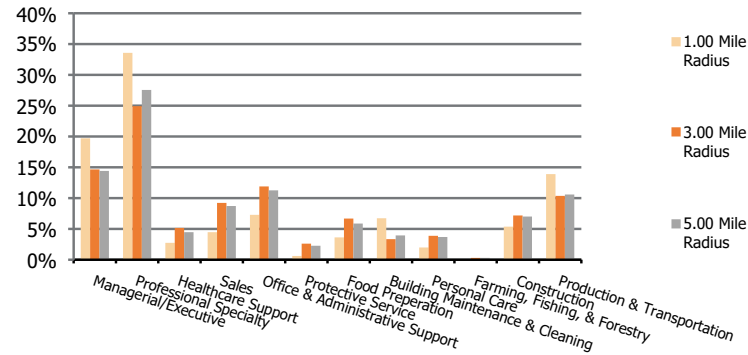
2020 Census, 2023 Estimates & 2028 Projections
 Calculated using TAS Retrieval

Colonial Commons Orange, CT	1.00 Mile Radius	3.00 Mile Radius	5.00 Mile Radius
---------------------------------------	-------------------------	-------------------------	-------------------------

Population by Age Range



Occupation



Population	Current Estimated Population	3,031	64,279	158,393
	2010 Census Population	2,996	57,710	138,615
	2000 Census Population	2,750	55,127	135,139
	Historical Annual Growth 2000 to 2010	0.9%	0.5%	0.3%
	Estimated Annual Growth 2010 to 2023	0.1%	0.8%	1.0%
	Projected Annual Growth 2023 to 2028	0.7%	0.1%	0.3%
Ethnic	Hispanic or Latino Population	9%	16%	19%
	Non Hispanic or Latino Population	91%	84%	81%
Race	White	71.9%	63.2%	56.5%
	Black or African American	7.8%	15.0%	18.7%
	Asian & Pacific Islander	9.9%	6.0%	6.2%
	Other Races	10.4%	15.8%	18.7%