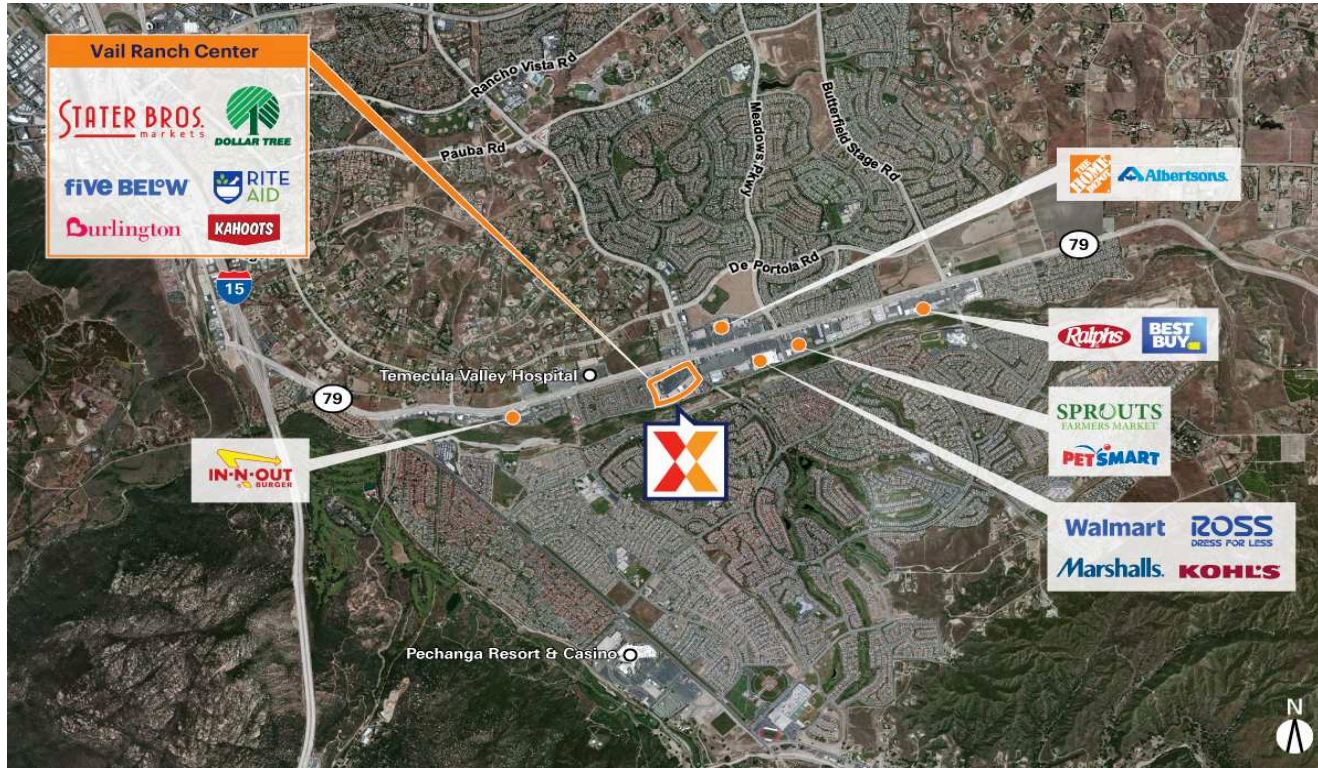


Vail Ranch Center

Riverside-San Bernardino-Ontario, CA

33.4777, -117.1029

31685-31845 Temecula Parkway | Temecula, CA 92592



Center Size: 201,682 SF



Demographics	1 Mile	3 Mile	5 Mile
	16,877	81,959	118,012
	5,288	25,995	38,173
	\$121,447	\$126,606	\$124,666

Highly trafficked center with Stater Bros that underwent a extensive \$11M center redevelopment, adding Burlington Stores & Five Below, completed in 2024 and is drawing an estimated 4M+ annual visits (Placer.ai 2024)

Ranked in the top 2% of centers in its class within the market in terms of visits (Placer.ai 2024)

Surrounded by an affluent and well-educated population with an average household income of \$147K+ and 40% college educated within a 3-mile radius

Situated across from the 140-bed Temecula Valley Hospital

High visibility from 41K+ VPD on Country Glen Way and 30K+ VPD on Redhawk Pkwy (Kalibrate, 2019)

Vail Ranch Center

Riverside-San Bernardino-Ontario, CA

33.4777, -117.1029

31685-31845 Temecula Parkway | Temecula, CA 92592



Available Space

G	5,952 SF
7	1,300 SF

Current Retailers

A3	Camp Transformation Center	3,761 SF	P5	Academy Tom Brant	1,395 SF
E-1	Kahoots	9,890 SF	PAD 7	CAVA	2,200 SF
F10A	Dairy Queen	1,300 SF	Q	Fast Track Fitness and Physical Therapy	2,000 SF
F11A	Sharetea	1,050 SF	01	Subway	1,260 SF
F3	Hot Yoga Healthy You	2,400 SF	02	Bella Nails and Spa	1,323 SF
FS10	Carbon Health	3,200 SF	03	Pure Nutrition	1,560 SF
FS10A	Dave's Hot Chicken	2,000 SF	04	Lisa Donut & Boba	812 SF
FS10B	Robeks	1,000 SF	04A	Alkapro	812 SF
FS11	AutoZone	4,950 SF	05	Smart Phone Repair	1,040 SF
H1	Chef K	2,300 SF	6	Nabe Nabe	1,300 SF
H3	Hanger Clinic	2,600 SF	08	Super Frame & Art	1,950 SF
J2	Dream Dinners	1,300 SF	09	Stater Bros.	50,499 SF
J3	Temecula Wigs	1,300 SF	10	Hana Sushi Restaurant	2,600 SF
K	Dollar Tree	10,537 SF	11	Vail Ranch Vision Center	1,300 SF
K-1	ABS Kids	7,463 SF	12	The UPS Store	1,300 SF
N.A.P.	Chevron	0 SF	13	Rockin' Ramen	1,300 SF
N.A.P.1	Taco Bell	0 SF	14	Harbor Freight	17,347 SF
N.A.P.2	McDonald's	0 SF	15	Burlington	25,017 SF
N.A.P.3	Medical Office	0 SF	15A	Five Below	10,664 SF
N.A.P.4	Bank	0 SF			
N.A.P.5	N.A.P.	0 SF			
N1	Temecula Wigs	1,200 SF			
N3	The Rehab Group	1,200 SF			
N5	Smoke Shop	1,200 SF			
O	NeoMed Spa	3,000 SF			
P1	Da Coconut Cafe	5,000 SF			
P3	Hana Taekwondo	2,100 SF			

5183