



Demographic Summary Report

2020 Census, 2023 Estimates & 2028 Projections
 Calculated using TAS Retrieval

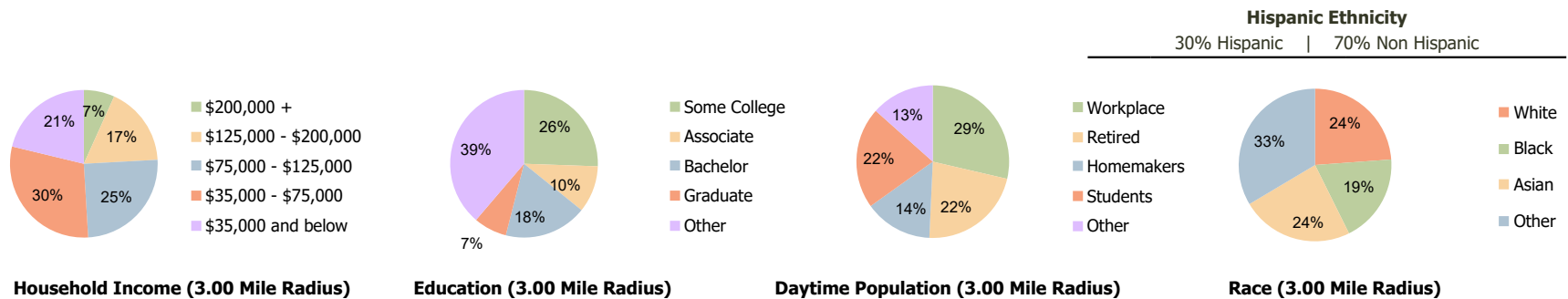
| Vallejo Corners Vallejo, CA | 1.00 Mile Radius | 3.00 Mile Radius | 5.00 Mile Radius |
|--------------------------------|------------------|------------------|------------------|
|--------------------------------|------------------|------------------|------------------|

Current Year Demographics

| | | | |
|-----------------------------------------|-----------|-----------|-----------|
| Current Population | 13,925 | 114,466 | 160,920 |
| Total Daytime Pop | 10,038 | 83,737 | 116,605 |
| Workplace Pop | 2,750 | 23,966 | 32,305 |
| Average Household Income | \$111,702 | \$93,027 | \$101,601 |
| Average Disposable Income | \$90,878 | \$75,534 | \$81,697 |
| Total Households | 4,685 | 38,942 | 54,428 |
| Median Home Value | \$656,014 | \$585,939 | \$629,038 |
| College (4+) | 31.8% | 25.4% | 28.2% |
| Total Consumer Spending/Capita (Weekly) | \$495 | \$480 | \$487 |
| Population per Household | 2.13 | 2.01 | 2.47 |
| % of Households with Children | 27.0% | 28.7% | 28.8% |

2028 Demographic Projections

| | | | |
|-------------------------------------------|--------|---------|---------|
| Projected Population | 13,774 | 114,093 | 161,467 |
| Projected 5 Year Annual Growth Rate (Pop) | -0.2% | -0.1% | 0.1% |



Vallejo Corners

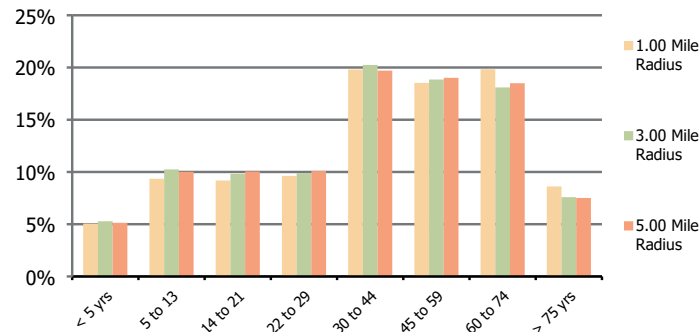
Vallejo, CA

1.00 Mile Radius

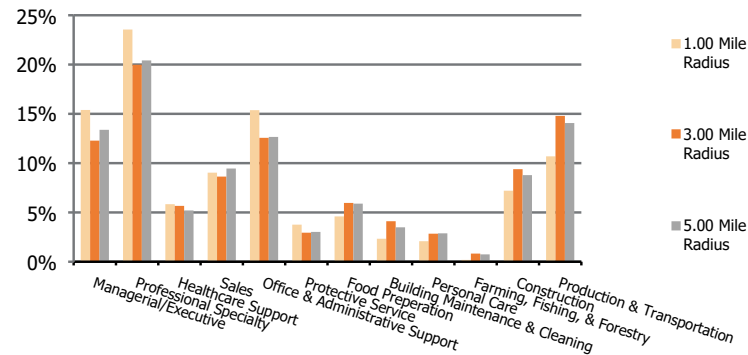
3.00 Mile Radius

5.00 Mile Radius

Population by Age Range



Occupation



| | | | | |
|-------------------|---------------------------------------|--------|---------|---------|
| Population | Current Estimated Population | 13,925 | 114,466 | 160,920 |
| | 2010 Census Population | 12,777 | 104,080 | 146,909 |
| | 2000 Census Population | 11,449 | 101,186 | 140,052 |
| | Historical Annual Growth 2000 to 2010 | 1.1% | 0.3% | 0.5% |
| | Estimated Annual Growth 2010 to 2023 | 0.7% | 0.7% | 0.7% |
| | Projected Annual Growth 2023 to 2028 | -0.2% | -0.1% | 0.1% |
| Ethnic | Hispanic or Latino Population | 19% | 30% | 28% |
| | Non Hispanic or Latino Population | 81% | 70% | 72% |
| Race | White | 17.8% | 23.8% | 26.6% |
| | Black or African American | 20.6% | 18.8% | 17.2% |
| | Asian & Pacific Islander | 37.8% | 23.8% | 24.3% |
| | Other Races | 23.7% | 33.5% | 31.9% |