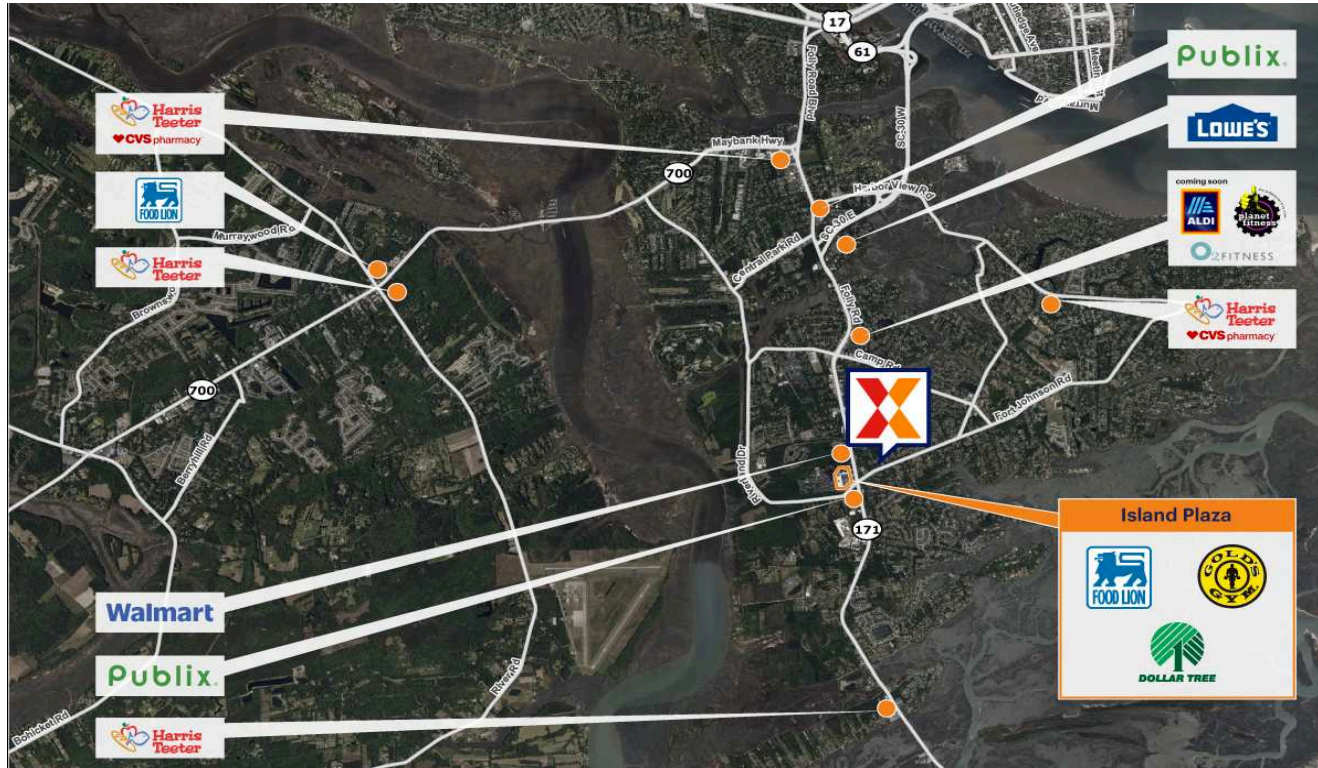


Island Plaza

Charleston-North Charleston, SC

32.7172, -79.9658

1291 Folly Road | James Island, SC 29412



Center Size: 174,094 SF



Demographics	1 Mile	3 Mile	5 Mile
👤	7,179	32,225	65,493
🏠	3,231	14,395	29,619
💰	\$101,615	\$104,506	\$122,064

Anchored by Food Lion, Gold's Gym & Harbor Freight

Surrounded by an affluent, educated population with an average household income of \$131K+ and 55% with a college education within 3 miles

High visibility from 28K+ vehicles daily on Folly Rd (Kalibrate 2021)

Island Plaza

Charleston-North Charleston, SC

32.7172, -79.9658
1291 Folly Road | James Island, SC 29412



Available Space

03A	6,400 SF
06	8,450 SF
16	1,200 SF
17	1,220 SF

Current Retailers

N.A.P.	Fifth Third Bank	0 SF
N.A.P.1	Florence's Low Country Kitchen	0 SF
N.A.P.2	Walmart	0 SF
N.A.P.3	Publix	0 SF
01	Famulari's Pizzeria Brewpub	5,656 SF
01A	Gold's Gym	44,344 SF
1B	Dollar Tree	17,720 SF
1C	Harbor Freight	26,680 SF
3B	Batteries Plus	1,800 SF
05	Food Lion	37,854 SF
07	Scramblers Golf	1,600 SF
08	Cato	4,800 SF
09	Nails So Dep!	3,000 SF
10	Forsberg Package Store	6,200 SF
12	Heart Beatz Dance Academy	1,200 SF
13	Great Wall	1,200 SF
14	Alvin Ord's Sandwich Shop	1,200 SF
15	Rype Juice Bar	1,200 SF
18	Autobell Car Wash	2,300 SF

Walmart

N.A.P.2



5179