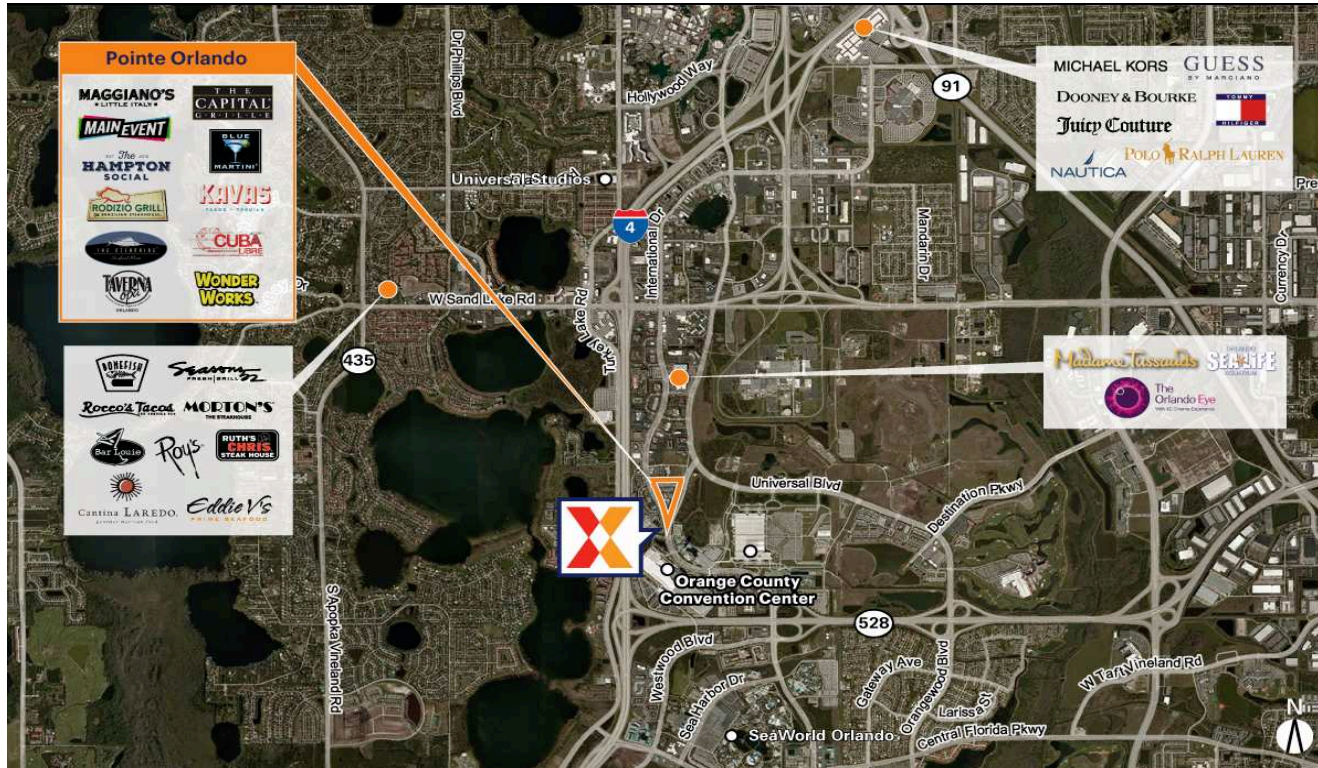


# Pointe Orlando

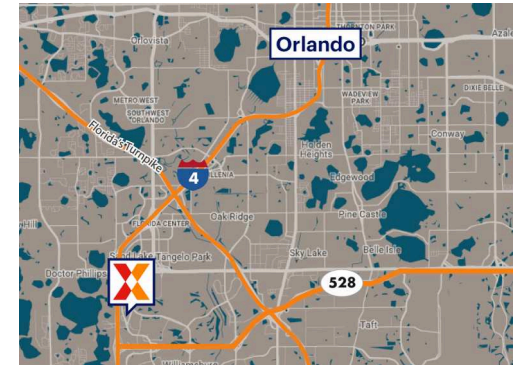
Orlando-Kissimmee-Sanford, FL

28.4324, -81.471

9101 International Drive | Orlando, FL 32819



Center Size: 413,887 SF



Demographics	1 Mile	3 Mile	5 Mile
	2,067	46,999	161,479
	927	19,066	60,612
	\$119,901	\$122,922	\$96,937

[www.pointeorlando.com](http://www.pointeorlando.com)

\$41M center redevelopment, adding Hampton Social, Kavaz Tacos & Tequila and four Cordish concepts, completed in 2024, plus an additional \$38M redevelopment currently underway with completion scheduled for 2026

Located in the heart of Orlando's tourist district International Drive and only three miles from Universal Studios, two miles from SeaWorld, and seven miles from Walt Disney World

Adjacent to the Orange County Convention Center, the second largest convention facility in the U.S., drawing 1.4M attendees each year (OCCC 2024) and surrounded by 125+ hotels and resorts (I-Drive District 2024)

Home to Live! at The Pointe, opened in 2024, featuring nationally acclaimed venues like Sports &

# Pointe Orlando

Orlando-Kissimmee-Sanford, FL

28.4324, -81.471

9101 International Drive | Orlando, FL 32819



1171

## Available Space

B	2,921 SF
101	6,500 SF
102	5,589 SF
104A	2,259 SF
106	3,006 SF
200	4,486 SF
214	1,486 SF
220B	2,346 SF
227	790 SF
248	1,608 SF
300A	2,484 SF
302A	1,831 SF
502	4,888 SF
504	2,084 SF

## Current Retailers

A3	Capital Grille	9,020 SF
PAD1	WonderWorks	24,506 SF
108	Sandbox VR	5,265 SF
111	Dick's Last Resort	10,352 SF
202	Activate Games	11,869 SF
209	Brixmor Leasing	6,140 SF
212	Strategic Artifex	1,923 SF
218	Jojo's Shake Bar	2,000 SF
220A	Will to Escape	5,376 SF
226	Cigars To Go	1,203 SF
230/	Kavas Taco y Tequila	10,184 SF
230A		
236	Blue Martini	7,205 SF
246	Moondance Trading	1,145 SF
250	Rocket Fizz	1,938 SF
300C	Monkey Joe's	17,250 SF
302	Meraki Office	6,464 SF
326	Palm Tree Club	6,483 SF
328/330	Cuba Libre Restaurant & Rum Bar	18,188 SF
332R	The Pub	7,975 SF
334R	The Oceanaire Seafood Room	8,500 SF
500R	Maggiano's Little Italy	16,400 SF
602	The Hampton Social	10,763 SF
604	Taffer's	3,561 SF
606	Jojo's Shake Bar	4,471 SF
608	Rodizio Grill	7,030 SF
1012	Main Event Entertainment	48,341 SF

# Pointe Orlando

Orlando-Kissimmee-Sanford, FL

28.4324, -81.471

9101 International Drive | Orlando, FL 32819

## Available Space

720	9,999 SF
720A	3,000 SF

## Current Retailers

E3A	Shark Bar	4,041 SF
E3C	Sport & Social	4,041 SF
312	Regal Cinemas	67,726 SF
326	Future Cordish Concept	6,483 SF
710	Funny Bone	14,369 SF
730	PBR Cowboy Bar	8,708 SF
740	Sports & Social	12,930 SF
741A	PBR Cowboy Bar	7,737 SF
742	Taverna Opa	5,500 SF



1171