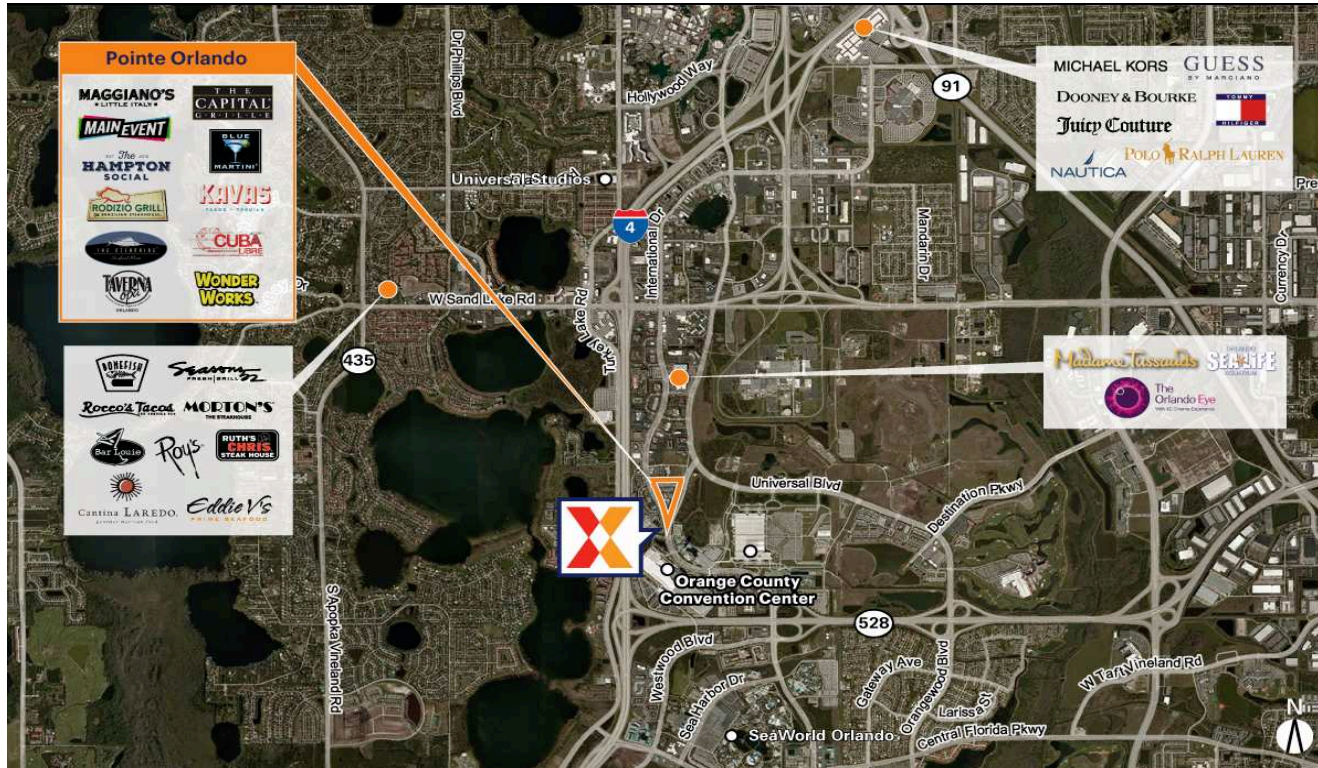


Pointe Orlando

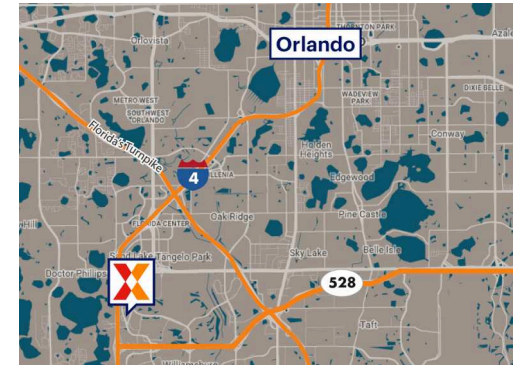
Orlando-Kissimmee-Sanford, FL

28.4324, -81.471

9101 International Drive | Orlando, FL 32819



Center Size: 413,887 SF



| Demographics | 1 Mile | 3 Mile | 5 Mile |
|--------------|-----------|-----------|----------|
| | 2,067 | 46,999 | 161,479 |
| | 927 | 19,066 | 60,612 |
| | \$119,901 | \$122,922 | \$96,937 |

www.pointeorlando.com

\$41M center redevelopment, adding Hampton Social, Kavaz Tacos & Tequila and four Cordish concepts, completed in 2024, plus an additional \$38M redevelopment currently underway with completion scheduled for 2026

Located in the heart of Orlando's tourist district International Drive and only three miles from Universal Studios, two miles from SeaWorld, and seven miles from Walt Disney World

Adjacent to the Orange County Convention Center, the second largest convention facility in the U.S., drawing 1.4M attendees each year (OCCC 2024) and surrounded by 125+ hotels and resorts (I-Drive District 2024)

Home to Live! at The Pointe, opened in 2024, featuring nationally acclaimed venues like Sports &

Pointe Orlando

Orlando-Kissimmee-Sanford, FL

28.4324, -81.471

9101 International Drive | Orlando, FL 32819



1171

Available Space

| | |
|------|----------|
| B | 2,921 SF |
| 101 | 6,500 SF |
| 102 | 5,589 SF |
| 104A | 2,259 SF |
| 106 | 3,006 SF |
| 200 | 4,486 SF |
| 212 | 1,923 SF |
| 214 | 1,486 SF |
| 220B | 2,346 SF |
| 227 | 790 SF |
| 248 | 1,608 SF |
| 300A | 2,484 SF |
| 302A | 1,831 SF |
| 502 | 4,888 SF |
| 504 | 2,084 SF |

Current Retailers

| | | |
|---------|---------------------------------|-----------|
| A3 | Capital Grille | 9,020 SF |
| PAD1 | WonderWorks | 24,506 SF |
| 108 | Sandbox VR | 5,265 SF |
| 111 | Dick's Last Resort | 10,352 SF |
| 202 | Activate Games | 11,869 SF |
| 209 | Brixmor Leasing | 6,140 SF |
| 218 | Jojo's Shake Bar | 2,000 SF |
| 220A | Will to Escape | 5,376 SF |
| 226 | Cigars To Go | 1,203 SF |
| 230/ | Kavas Taco y Tequila | 10,184 SF |
| 230A | | |
| 236 | Blue Martini | 7,205 SF |
| 246 | Moondance Trading | 1,145 SF |
| 250 | Rocket Fizz | 1,938 SF |
| 300C | Monkey Joe's | 17,250 SF |
| 302 | Meraki Office | 6,464 SF |
| 326 | Palm Tree Club | 6,483 SF |
| 328/330 | Cuba Libre Restaurant & Rum Bar | 18,188 SF |
| 332R | The Pub | 7,975 SF |
| 334R | The Oceanaire Seafood Room | 8,500 SF |
| 500R | Maggiano's Little Italy | 16,400 SF |
| 602 | The Hampton Social | 10,763 SF |
| 604 | Taffer's | 3,561 SF |
| 606 | Jojo's Shake Bar | 4,471 SF |
| 608 | Rodizio Grill | 7,030 SF |
| 1012 | Main Event Entertainment | 48,341 SF |

Pointe Orlando

Orlando-Kissimmee-Sanford, FL

28.4324, -81.471

9101 International Drive | Orlando, FL 32819

Available Space

| | |
|------|----------|
| 720 | 9,999 SF |
| 720A | 3,000 SF |

Current Retailers

| | | |
|------|------------------------|-----------|
| E3A | Shark Bar | 4,041 SF |
| E3C | Sport & Social | 4,041 SF |
| 312 | Regal Cinemas | 67,726 SF |
| 326 | Future Cordish Concept | 6,483 SF |
| 710 | Funny Bone | 14,369 SF |
| 730 | PBR Cowboy Bar | 8,708 SF |
| 740 | Sports & Social | 12,930 SF |
| 741A | PBR Cowboy Bar | 7,737 SF |
| 742 | Taverna Opa | 5,500 SF |



1171