

# McMullen Creek Market

Charlotte-Concord-Gastonia, NC-SC

35.0892, -80.8595

8318 Pineville-Matthews Rd | Charlotte, NC 28226



Center Size: 285,424 SF



Demographics	1 Mile	3 Mile	5 Mile
	12,279	74,221	204,757
	5,568	31,837	83,146
	\$88,365	\$118,000	\$128,496

Walmart Neighborhood Market-anchored shopping center with a strong lineup of national retailers including Burlington Stores, Dollar Tree, Spectrum & Staples, drawing an estimated 9,900 visits/day and 3.6M+ visits/year (based on CreditIntell)

Retail location on Pineville-Matthews Rd in the middle of South Charlotte's retail hub with nearly 800,000 SF of retail space.

Close proximity to Carolina Place Mall with 14MM+ visitors/year.

Surrounded by an affluent population of 74,000+ with an average household income of \$118,000+ within a 3-mile radius.

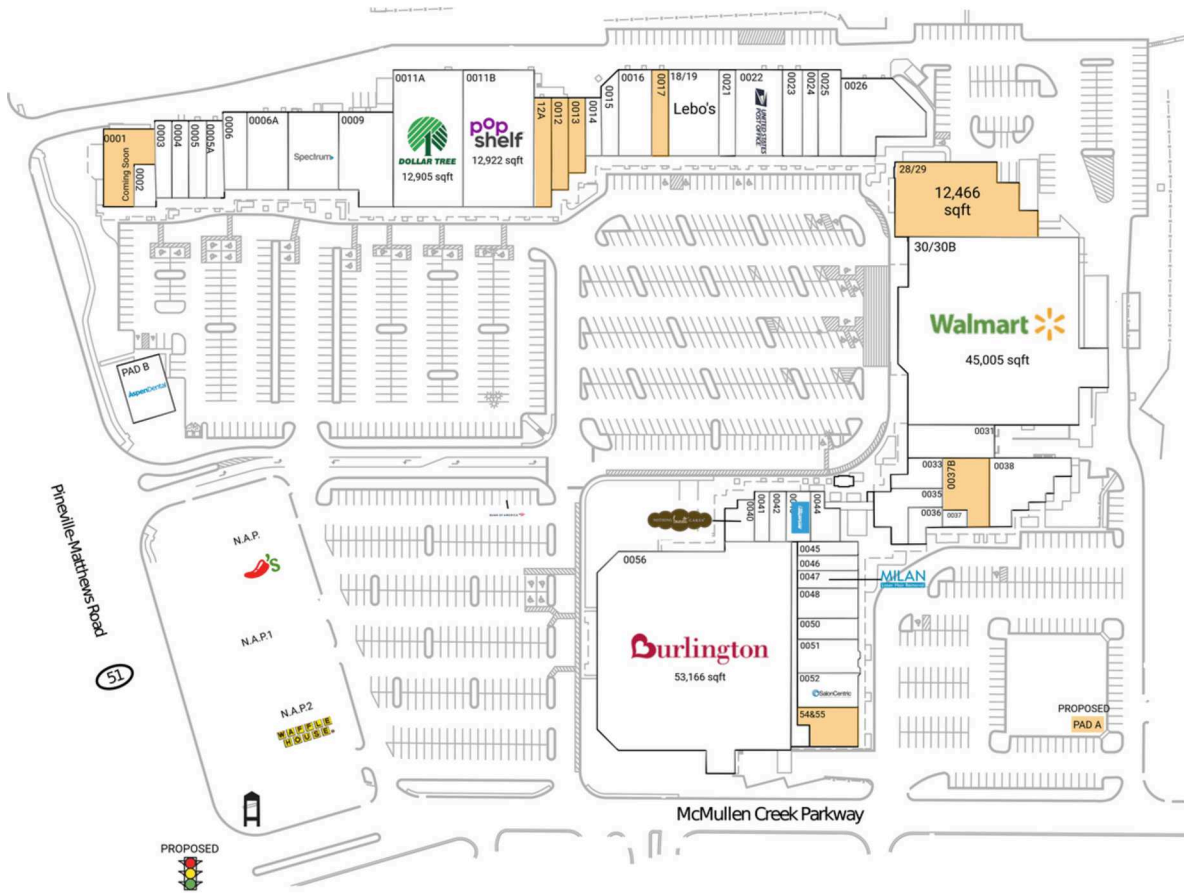
Charlotte is the second largest banking and financial market in the U.S.

Property is currently under renovation

# McMullen Creek Market

Charlotte-Concord-Gastonia, NC-SC

35.0892, -80.8595  
8318 Pineville-Matthews Rd | Charlotte, NC 28226



## Available Space

PAD A	10,000 SF
0001	4,283 SF
0012	2,140 SF
12A	2,540 SF
0013	1,735 SF
0017	2,000 SF
28/29	12,466 SF
0037B	2,400 SF
54&55	2,844 SF

## Current Retailers

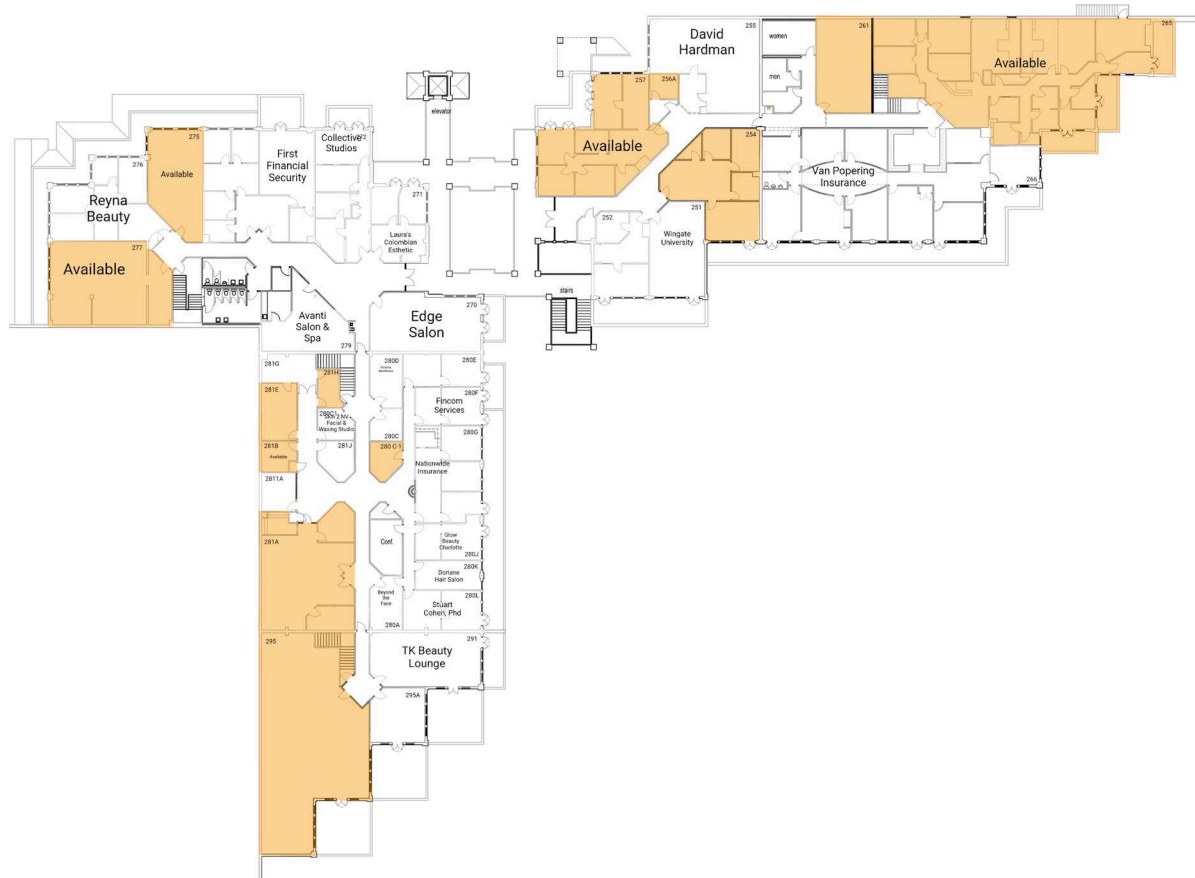
ATM	Bank of America	0 SF	0026	My Salon Suites	6,176 SF
	ATM		30/30B	Walmart	45,005 SF
N.A.P.	Chili's Grill & Bar	0 SF		Neighborhood Market	
N.A.P.1	Speedy Lube	0 SF		Banner's Hallmark	2,000 SF
N.A.P.2	Waffle House	0 SF	0031	Los Paisas	2,000 SF
PAD B	Aspen Dental	3,336 SF	0033	Restaurant	
0002	The UPS Store	1,137 SF		Bonchon	2,820 SF
0003	Hungry Howie's	1,800 SF	0035	Dog Gone	1,080 SF
0004	Wingstop	1,800 SF	0036	Beautiful	
0005	U.S. Bank	1,800 SF		Stylash Spa	580 SF
0005A	Rio Body Wax	1,800 SF	0037	704 Korean BBQ	4,999 SF
0006	Mr. Tokyo	2,610 SF	0038	Nothing Bundt Cakes	1,820 SF
	Japanese Restaurant		0040	Nazo's	1,190 SF
0006A	Metro Diner	4,463 SF	0041	Alo Nail Lounge	1,341 SF
0008	Spectrum	5,400 SF	0042	Any Lab Test Now	1,080 SF
0009	IORA Health	6,200 SF	0043	Charlotte Driving Academy	1,955 SF
0011A	Dollar Tree	12,905 SF	0044	Tower Place	905 SF
0011B	pOpshelf	12,922 SF		Barber Shop	
0014	Quick Wok	1,335 SF	0045	Fast Frame	1,430 SF
0015	Cigarettes & More	1,760 SF	0046	Milan Laser Hair Removal	1,644 SF
0016	The Soccer Shop	4,000 SF	0047	Whole Pet Vet	2,834 SF
18/19	Lebo's	6,080 SF		Chiropractic Fitness	1,974 SF
0021	Pineville	1,966 SF	0048	Rice & Spice	3,122 SF
	Nutrition		0050	Salon Centric	3,217 SF
0022	United States Post Office	5,600 SF	0051	Burlington	53,166 SF
	Fit to Fight	2,400 SF	0052		
0023	Salon Le Thomas	2,000 SF	0056		
0024	Anna's Alterations	2,432 SF			
0025					

4129

# McMullen Creek Market

Charlotte-Concord-Gastonia, NC-SC

35.0892, -80.8595  
8318 Pineville-Matthews Rd | Charlotte, NC 28226



4129

## Available Space

254	1,249 SF
256A	120 SF
257	1,157 SF
261	325 SF
265	5,287 SF
275	777 SF
277	1,432 SF
280 C-1	160 SF
281A	1,520 SF
281B	124 SF
281E	213 SF
281H	162 SF
295	2,833 SF

## Current Retailers

251	Wingate University	749 SF
252	Law Office of Matthew D. Pierce	705 SF
255	David Hardman	969 SF
266	Van Popering Insurance	3,847 SF
270	Edge Salon	932 SF
271	Laura's Colombian Esthetic	622 SF
272	Collective Studios	345 SF
273	First Financial Security	1,760 SF
276	Reyna Beauty	1,110 SF
279	Avanti Salon & Spa	763 SF
280A	Beyond the Face	252 SF
280C	Servicios Plus	140 SF
280C1	Skin 2 NV Facial & Waxing Studio	160 SF
280D	Victoria Akinfenwa	252 SF
280E	La La Lashes	360 SF
280F	Fincom Services	348 SF
280G	Nationwide Insurance	897 SF
280J	Glow Beauty Charlotte	345 SF
280K	Doriane Hair Salon	274 SF
280L	Stuart Cohen, PhD	477 SF
281G	Nova Total Body	324 SF
281J	Shari	170 SF
291	TK Beauty Lounge	849 SF
295A	Divine Touch Beauty	500 SF
2811A	Suzano Pulp and Paper	175 SF