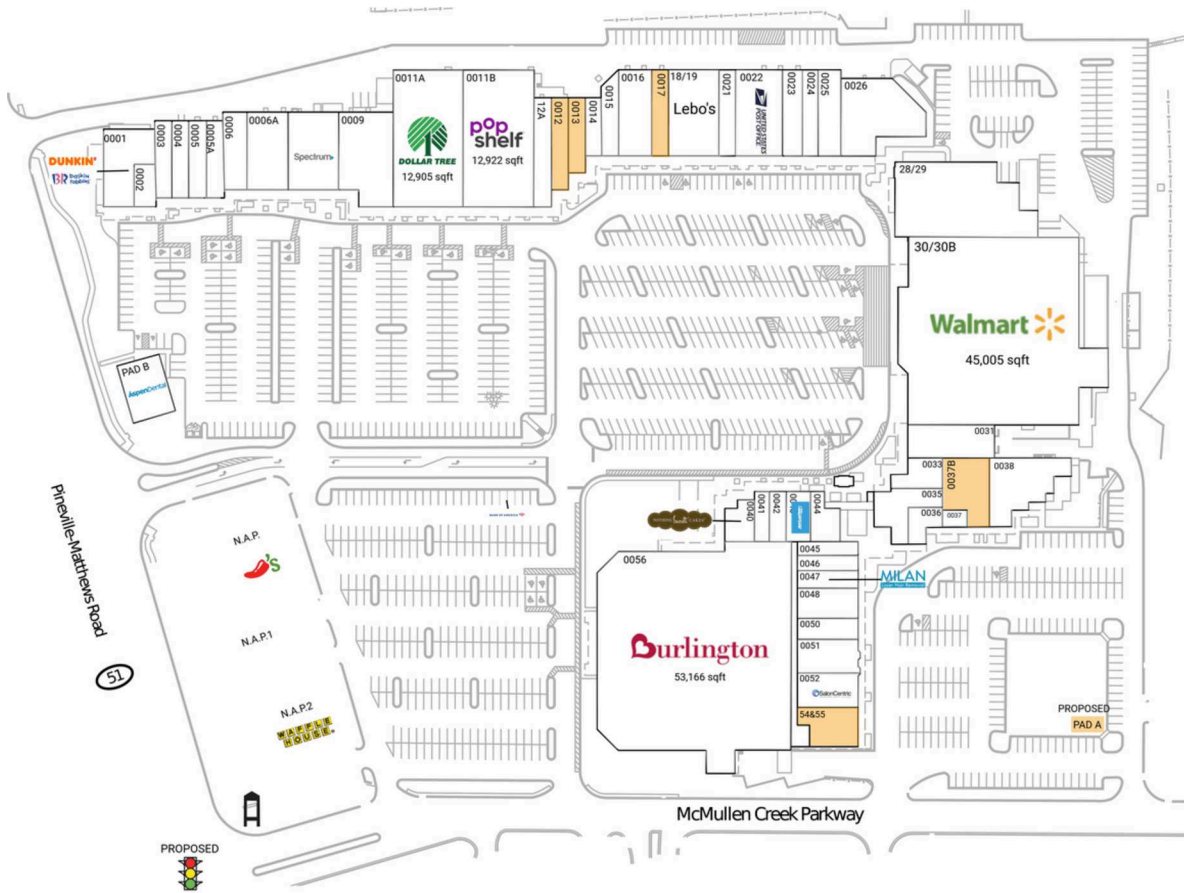


# McMullen Creek Market

Charlotte-Concord-Gastonia, NC-SC

35.0892, -80.8595  
8318 Pineville-Matthews Rd | Charlotte, NC 28226



## Available Space

PAD A	10,000 SF
0012	2,140 SF
0013	1,735 SF
0017	2,000 SF
0037B	2,400 SF
54&55	2,844 SF

## Current Retailers

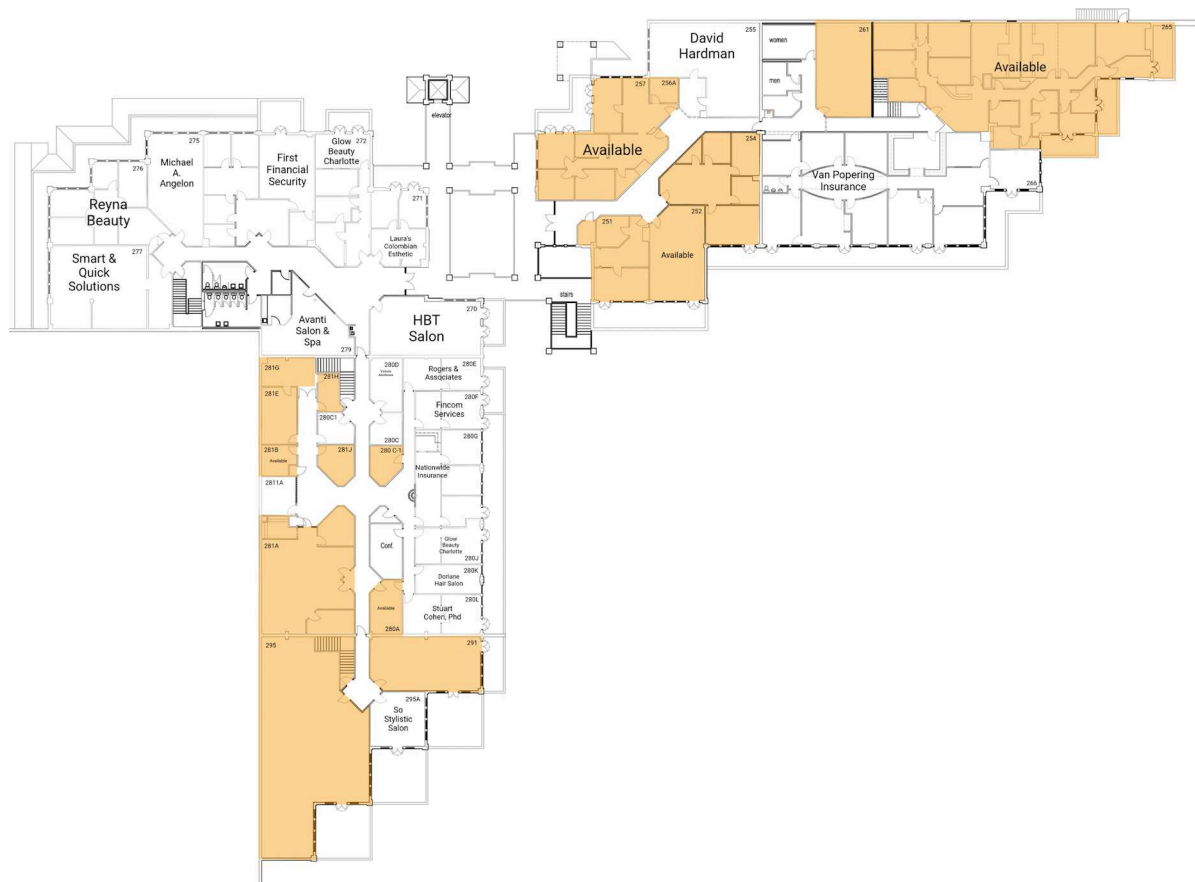
ATM	Bank Of America	0 SF	0025	Anna's Alterations	2,432 SF
	ATM		0026	My Salon Suites	6,176 SF
N.A.P.	Chili's Grill & Bar	0 SF	28/29	Coming Available	12,729 SF
N.A.P.1	Speedy Lube	0 SF	30/30B	Walmart	45,005 SF
N.A.P.2	Waffle House	0 SF		Neighborhood Market	
PAD B	Aspen Dental	3,336 SF		Banner's Hallmark	2,000 SF
0001	Dunkin' Donuts & Baskin Robbins	4,283 SF	0031	Los Paisas	2,000 SF
	The UPS Store	1,137 SF	0033	Restaurant	
0002	Hungry Howie's	1,800 SF	0035	Bonchon	2,820 SF
0003	Wingstop	1,800 SF	0036	Dog Gone Beautiful	1,080 SF
0004	U.S. Bank	1,800 SF		Stylash Spa	580 SF
0005	Rio Body Wax	1,800 SF	0037	704 Korean BBQ	4,999 SF
0005A	Mr. Tokyo Japanese Restaurant	2,610 SF	0038	Nothing Bundt Cakes	1,820 SF
0006	Metro Diner	4,463 SF	0040	Nazo's	1,190 SF
	Spectrum	5,400 SF	0041	Alo Nail Lounge	1,341 SF
0006A	IORA Health	6,200 SF	0042	Any Lab Test Now	1,080 SF
0008	Dollar Tree	12,905 SF	0043	Charlotte Driving Academy	1,955 SF
0009	Popshelf	12,922 SF	0044	Tower Place Barber Shop	905 SF
0011A	The Skrimp Shack	2,540 SF	0045	Fast Frame	1,430 SF
0011B	Quick Wok	1,335 SF	0046	Milan Laser Hair Removal	1,644 SF
12A	Cigarettes & More	1,760 SF	0047	Whole Pet Vet	2,834 SF
0014	The Soccer Shop	4,000 SF	0048	Chiropractic Fitness	1,974 SF
0015	Lebo's	6,080 SF	0050	Rice & Spice	3,122 SF
0016	Pineville Nutrition	1,966 SF	0051	Salon Centric	3,217 SF
18/19	Nutrition		0052	Burlington	53,166 SF
0021	United States Post Office	5,600 SF	0056		
0022	Fit To Fight	2,400 SF			
0023	Salon Le Thomas	2,000 SF			
0024					

4129

# McMullen Creek Market

Charlotte-Concord-Gastonia, NC-SC

35.0892, -80.8595  
8318 Pineville-Matthews Rd | Charlotte, NC 28226



## Available Space

251	705 SF
252	705 SF
254	1,249 SF
256A	120 SF
257	1,157 SF
261	325 SF
265	5,287 SF
280 C-1	160 SF
280A	252 SF
281A	1,520 SF
281B	124 SF
281E	213 SF
281G	324 SF
281H	160 SF
281J	160 SF
291	849 SF
295	2,833 SF

## Current Retailers

255	David Hardman	969 SF
266	Van Popering Insurance	3,847 SF
270	HBT Salon	932 SF
271	Laura's Colombian Esthetic	622 SF
272	Glow Beauty Charlotte	345 SF
273	First Financial Security	1,760 SF
275	Michael A. Angelon	777 SF
276	Reyna Beauty	1,110 SF
277	Smart & Quick Solutions	1,432 SF
279	Avanti Salon & Spa	763 SF
280C	Servicios Plus	140 SF
280C1	Skin 2 NV Facial & Waxing Studio	160 SF
280D	Victoria Akinfenwa	252 SF
280E	Rogers & Associates	360 SF
280F	Fincom Services	348 SF
280G	Nationwide Insurance	897 SF
280J	Glow Beauty Charlotte	345 SF
280K	Doriane Hair Salon	274 SF
280L	Stuart Cohen, PhD	477 SF
295A	So Stylistic Salon	500 SF
2811A	Suzano Pulp And Paper	175 SF

4129