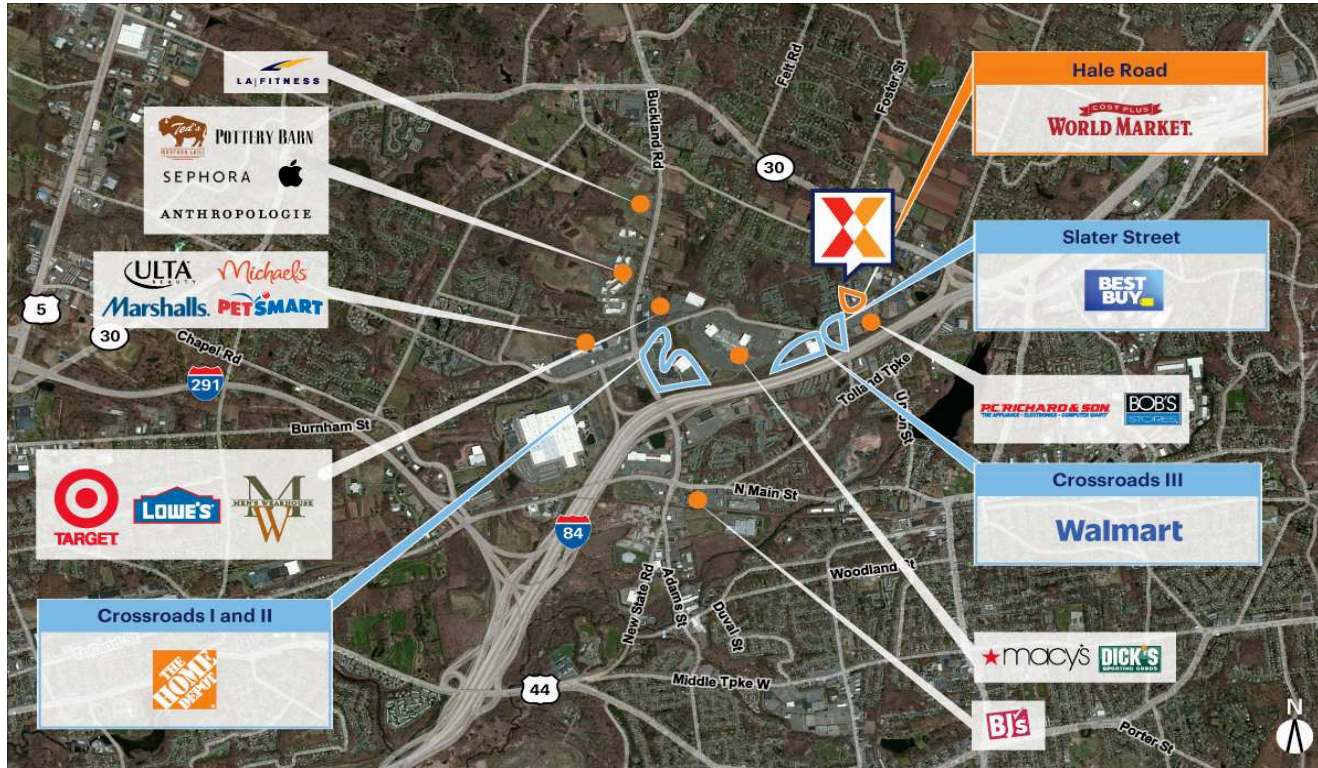


# Hale Road

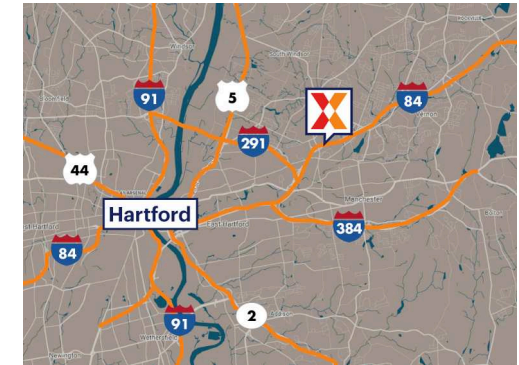
Hartford-West Hartford-East Hartford, CT

41.8121, -72.5324

169 Hale Road | Manchester, CT 06042-8755



Center Size: 103,931 SF



| Demographics | 1 Mile   | 3 Mile    | 5 Mile    |
|--------------|----------|-----------|-----------|
|              | 6,420    | 60,567    | 128,203   |
|              | 2,881    | 25,375    | 52,964    |
|              | \$98,009 | \$102,673 | \$100,021 |

Hale Road is anchored by World Market and a large format entertainment tenant

Located in the 2.4M SF Buckland Hills retail node with a strong regional draw (Center XY 2024)

Surrounded by a highly educated trade area with 40% college educated persons within 3 miles and a strong daytime population of 70,900+

The center is easily accessible from I-84 with 130,000 vehicles daily via Buckland Street (Kalibrate 2018)

# Hale Road

Hartford-West Hartford-East Hartford, CT

41.8121, -72.5324

169 Hale Road | Manchester, CT 06042-8755



## Available Space

|       |           |
|-------|-----------|
| 1100  | 30,681 SF |
| 1250  | 21,540 SF |
| 1300A | 1,685 SF  |

## Current Retailers

|      |                        |           |
|------|------------------------|-----------|
| 1150 | Lava Island            | 30,000 SF |
| 1225 | Cost Plus World Market | 16,710 SF |
| 1300 | Kaoud Oriental Rugs    | 3,315 SF  |

4236