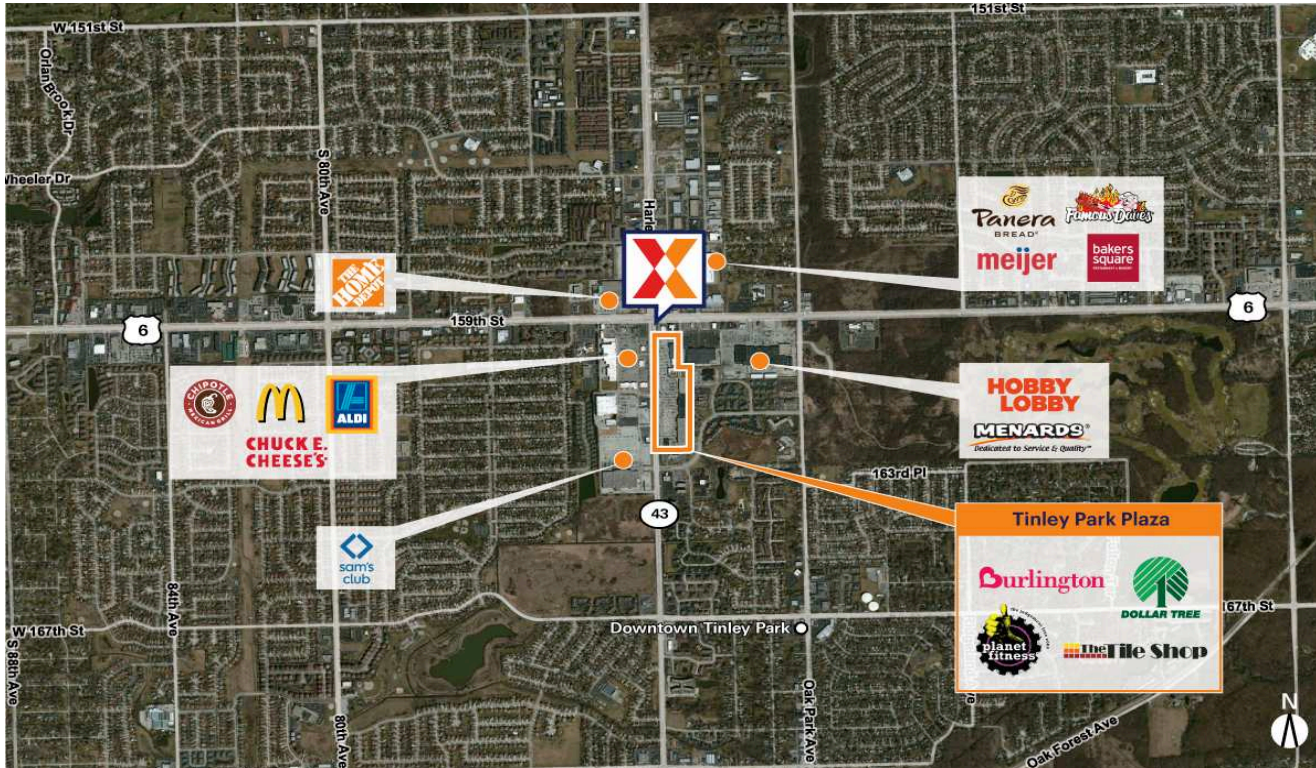


# Tinley Park Plaza

Chicago-Naperville-Elgin, IL-IN

41.5988, -87.793

15917 South Harlem Avenue | Tinley Park, IL 60477



Center Size: 241,427 SF



Demographics	1 Mile	3 Mile	5 Mile
	12,632	90,380	200,392
	5,145	35,539	77,228
	\$84,890	\$95,878	\$97,771

Prime location in Crystal Lake's major retail node, with a strong lineup of national tenants such as Burlington, Hobby Lobby, Jewel-Osco & Harbor Freight Tools

Affluent and highly educated trade area with an average household income of \$124K+ and 40% of residents holding a college degree within a 3-mile radius

Highly trafficked center drawing an estimated 7K+ visits daily and 2.4M+ annually (Placer.ai 2024)

Strong daytime population of 59K+ within 3 miles

Well-positioned at the intersection of US-14 with 30K+ vehicles daily, and Main St with 14K+ (Kalibrate 2021)

# Tinley Park Plaza

Chicago-Naperville-Elgin, IL-IN

41.5988, -87.793

15917 South Harlem Avenue | Tinley Park, IL 60477



## Available Space

18	3,566 SF
27	5,206 SF
29B	2,910 SF
30A	3,004 SF
32CA	1,667 SF
32F	1,600 SF

## Current Retailers

N.A.P.1	Hobby Lobby	0 SF	12	Taco Pros	1,600 SF
N.A.P.2	Floor & Decor	0 SF	13	Vida Boba Cafe	1,600 SF
N.A.P.3	Burger King	0 SF	14	Only Nails	1,210 SF
N.A.P.4	PNC Bank	0 SF	15-17	Bath & Body Works	4,948 SF
N.A.P.5	Starbucks	0 SF	25	Burlington	25,000 SF
N.A.P.6	Advanced Orthopedic & Spine Care	0 SF	26	Amazon Fresh	38,436 SF
01A	Blaze Pizza	2,500 SF	29	Ross Dress for Less	22,000 SF
01B	Dental Works	4,017 SF	29A	Batteries Plus	1,600 SF
01D	Noodles & Company	2,500 SF	30	Double T Nailbar	6,000 SF
02	Eiffel Waffle	2,000 SF	30B	Five Below	9,828 SF
3/4	Leslie's Pool Supplies	4,000 SF	31	Planet Fitness	22,722 SF
05	GNC	2,000 SF	31A	The Tile Shop	22,100 SF
06	Naz's Halal Food	2,000 SF	31C	LL Flooring	6,435 SF
07	Phenix Salon Suites	6,095 SF	31D	Dollar Tree	19,940 SF
08	Xfinity	2,540 SF	32B	America's Best Contacts & Eyeglasses	3,020 SF
09	Jimmy John's	1,300 SF	32C	GameStop	1,200 SF
10	The UPS Store	1,600 SF	32D	Stella's Place	2,040 SF
11	Crumbi Cookies	1,600 SF	32E	Anjel's Boutique	1,960 SF