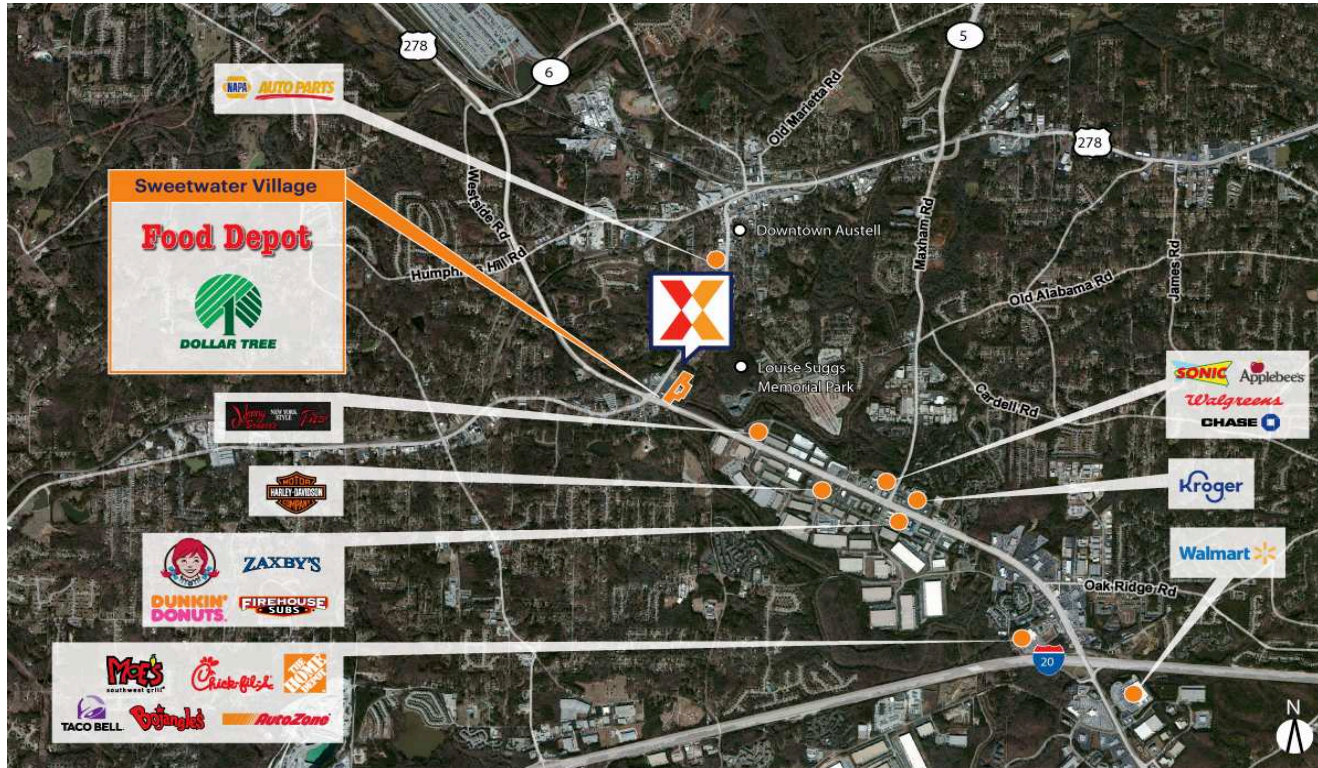


# Sweetwater Village

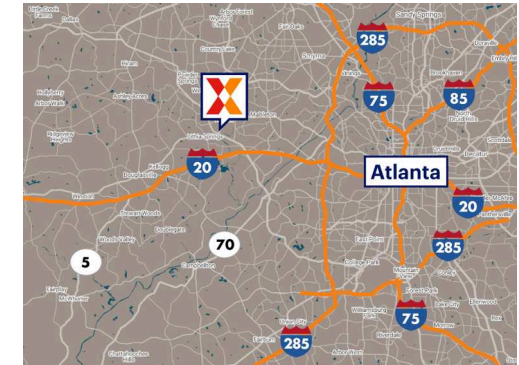
Atlanta-Sandy Springs-Roswell, GA

33.798, -84.6412

3030 Bankhead Highway | Austell, GA 30168



Center Size: 66,197 SF



Demographics	1 Mile	3 Mile	5 Mile
	6,250	44,787	119,358
	2,510	17,108	44,237
	\$64,563	\$79,263	\$88,480

Food Depot-anchored center with top national brands including Dollar Tree, Little Caesars & Metro by T-Mobile

Benefits from a strong daytime population of 45K+ within 3 miles

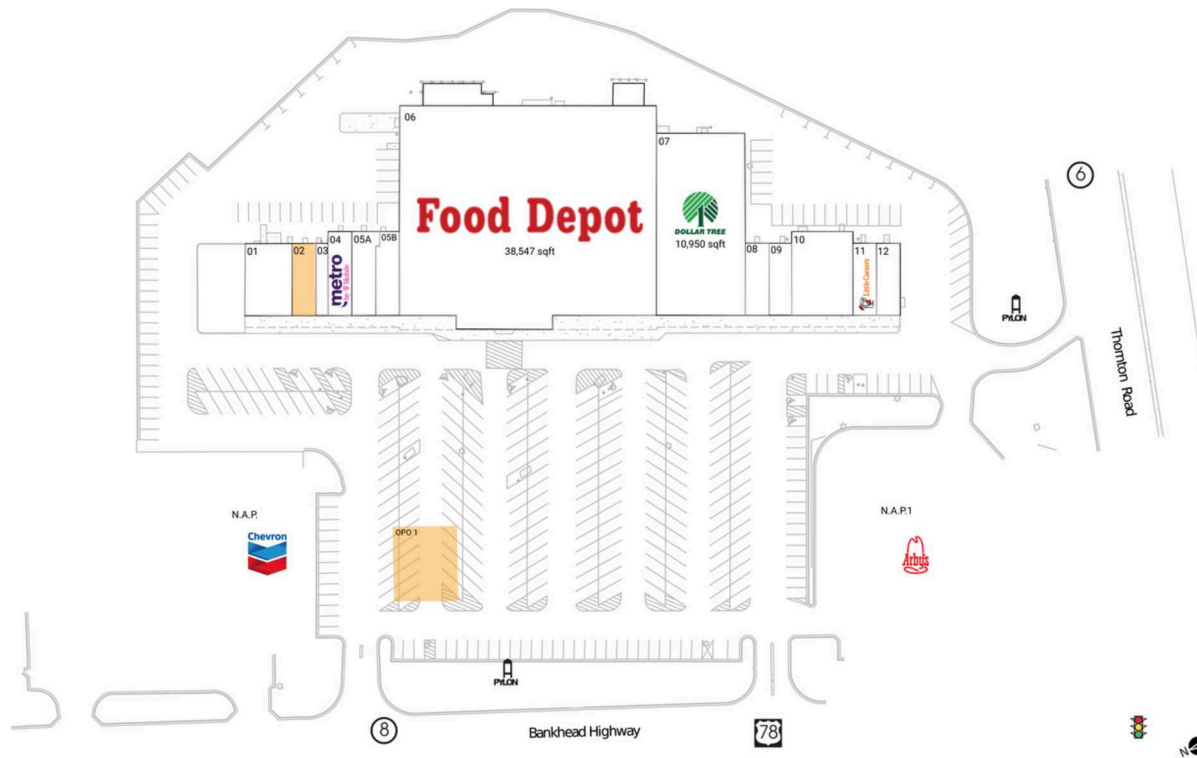
High visibility from 46K+ vehicles daily on Thornton Rd and 18K+ vehicles/day on Veterans Memorial Hwy (Kalibrate 2021)

# Sweetwater Village

Atlanta-Sandy Springs-Roswell, GA

33.798, -84.6412

3030 Bankhead Highway | Austell, GA 30168



## Available Space

OPO 1	0 SF
O2	1,200 SF

## Current Retailers

N.A.P.	Chevron	0 SF
N.A.P.1	Arby's	0 SF
01	Great Wall Chinese Restaurant	2,400 SF
03	Calidad Insurance	600 SF
04	Metro by T-Mobile	1,400 SF
05A	Ariel Barber & Salon	1,450 SF
05B	Don Churro Latin Flavors y Mas	1,350 SF
06	Food Depot	38,547 SF
07	Dollar Tree	10,950 SF
08	Power Nails	1,200 SF
09	Touchdown Wings	1,200 SF
10	Beauty Emporium	3,500 SF
11	Little Caesars Pizza	1,200 SF
12	C & N Cleaners	1,200 SF