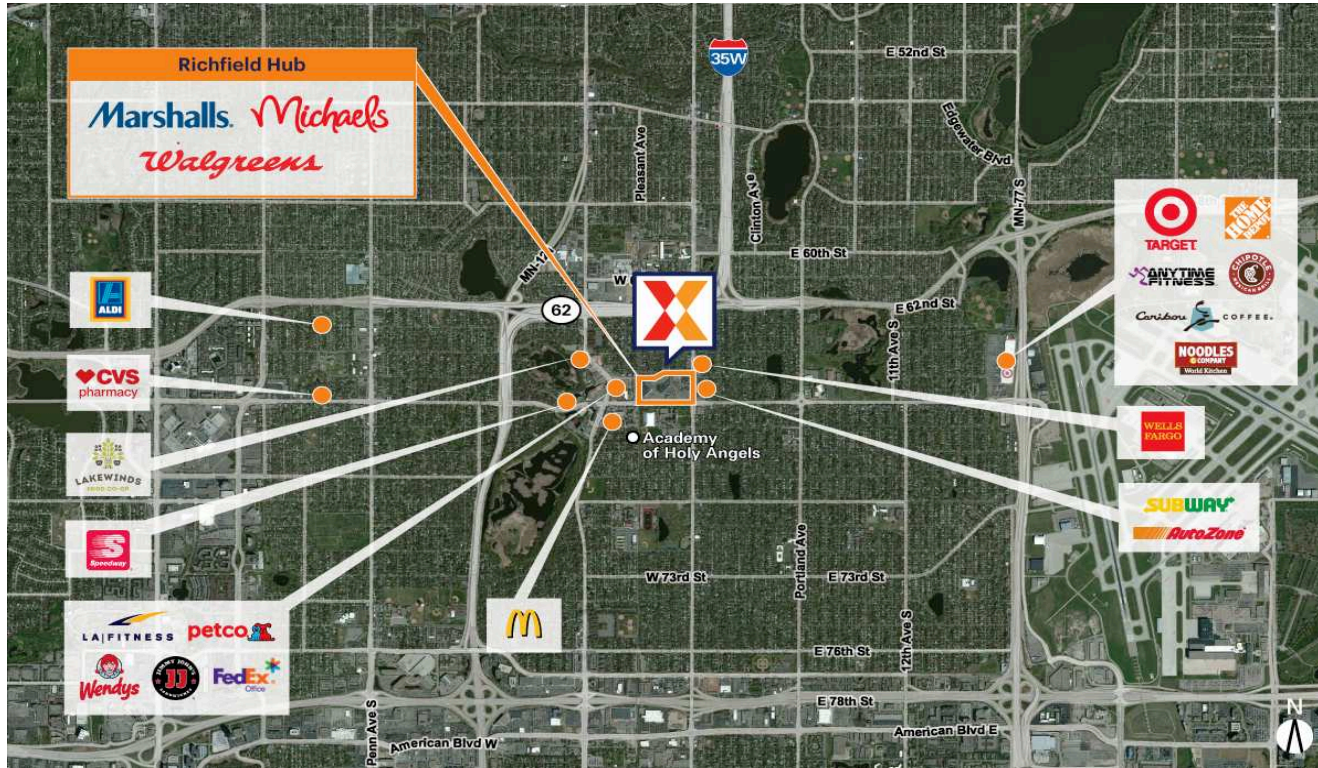


# Richfield Hub

Minneapolis-St. Paul-Bloomington, MN-WI

44.8844, -93.2801

36 West 66th Street | Richfield, MN 55423-2316



Center Size: 213,595 SF



Demographics	1 Mile	3 Mile	5 Mile
	15,449	132,041	333,867
	6,838	55,309	144,898
	\$89,343	\$117,581	\$112,950

Established community center serving the Richfield community for 60+ years

Surrounded by a dense population of 132,000+ with an average household income of \$117,000+ within 3 miles

Marshalls-anchored center with top national retailers including Marshalls, Michaels, Walgreens, Dollar Tree, & T-Mobile

Close proximity to Minneapolis - St. Paul International Airport, Mall of America and downtown Minneapolis

# Richfield Hub

Minneapolis-St. Paul-Bloomington, MN-WI

44.8844, -93.2801  
36 West 66th Street | Richfield, MN 55423-2316



## Available Space

1	5,411 SF
1A	1,216 SF
12	2,500 SF
15	1,698 SF
17	1,440 SF
20	1,399 SF
21A	1,234 SF
21B	1,891 SF
22	3,432 SF
25	5,418 SF
28/29	3,512 SF
33-2	807 SF

## Current Retailers

A	Loma Bonita Market	52,195 SF
B	SciTech Academy	26,185 SF
N.A.P.	Popeyes	0 SF
N.A.P.1	N.A.P.	0 SF
N.A.P.2	N.A.P.	0 SF
2	Michaels	24,235 SF
3A	Dollar Tree	11,801 SF
10	Richfield Medical Group	7,545 SF
14	Marshalls	26,785 SF
16	Rainbow	6,000 SF
18	Hot Comics & Collectables	2,900 SF
18A	T-Mobile	1,450 SF
19	Golden Tobacco	1,440 SF
23	Walgreens	12,000 SF
26	China Garden	1,809 SF
27	Los Sanchez	2,890 SF
33	GNC	1,221 SF
34	Burger King	4,401 SF
34-2	Richfield Tax	1,587 SF
34-2A	Brixmor Leasing	932 SF

4186