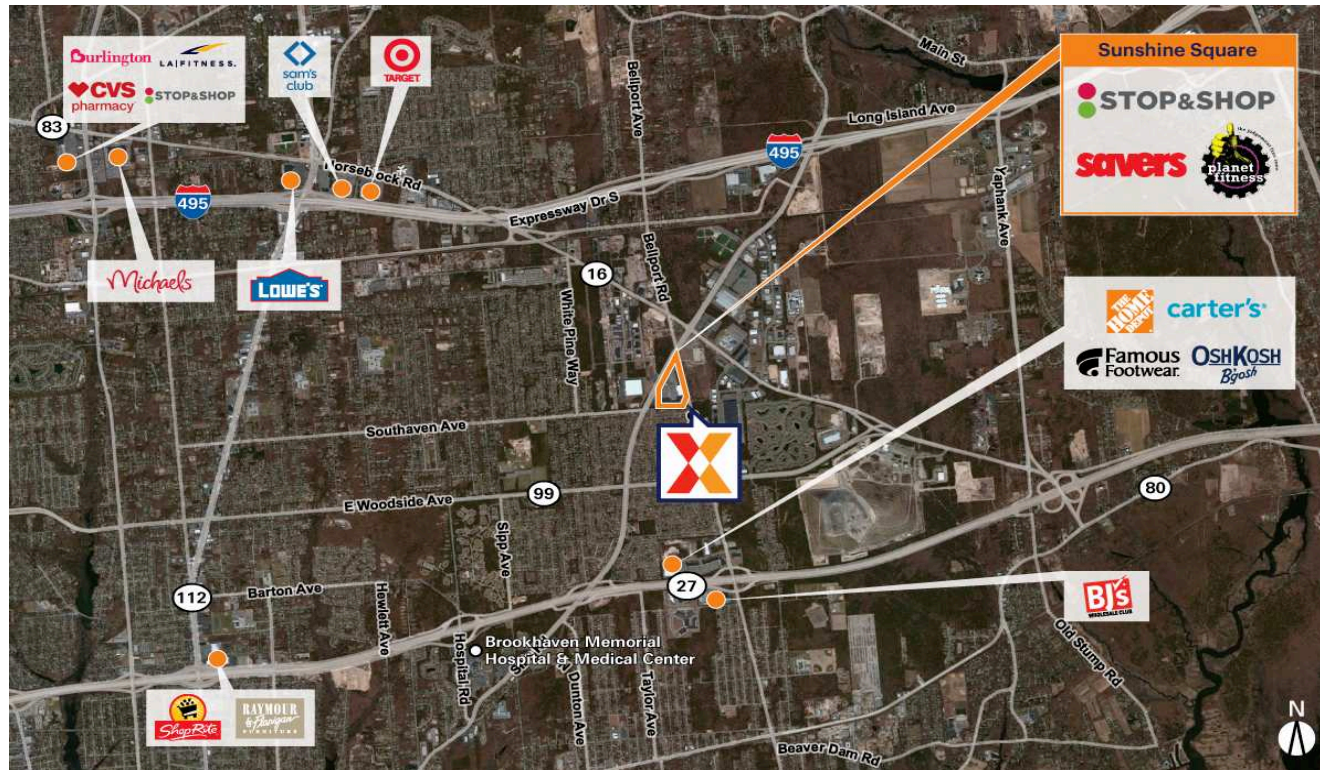


# Sunshine Square

New York-Newark-Jersey City, NY-NJ

40.8061, -72.9541

700 Patchogue Yaphank Road | Medford, NY 11763



Center Size: 222,775 SF



Demographics	1 Mile	3 Mile	5 Mile
	7,888	47,442	134,647
	2,612	15,717	47,370
	\$125,095	\$126,891	\$135,601

Anchored by Super Stop & Shop with national brands including Planet Fitness, Savers, Friendly's and T-Mobile, drawing an estimated 2.7M annual visits (Placer.ai 2024)

Planet Fitness ranks as the 5th highest visited location in New York state (Placer.ai 2024)

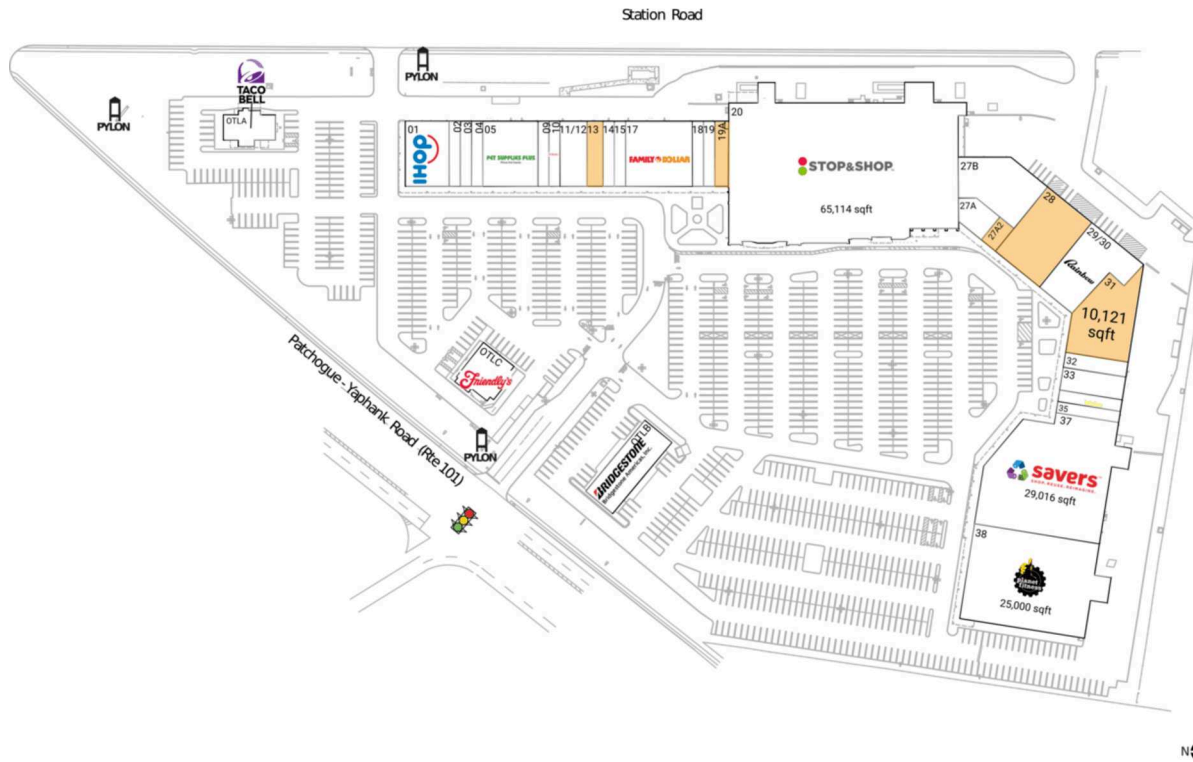
Located adjacent to several distribution centers, the trade area has a strong daytime population of 48,000+ within 3 miles

Located within 1.5 miles of both I-495/Long Island Expressway and NY 27/Sunrise Hwy, with access provided by Exits 65 & 66 on I-495 and Exits 55 & 56 on NY 27

# Sunshine Square

New York-Newark-Jersey City, NY-NJ

40.8061, -72.9541  
700 Patchogue Yaphank Road | Medford, NY 11763



1650

## Available Space

13	2,139 SF
19A	2,166 SF
27A2	1,110 SF
28	9,596 SF
31	10,121 SF

## Current Retailers

OTLA	Taco Bell	2,955 SF
OTLB	Bridgestone/Firestone	6,600 SF
OTLC	Friendly's	3,742 SF
01	IHOP	5,801 SF
02	Verizon Wireless	1,488 SF
03	Medford Foot Care	1,488 SF
04	Subway	1,488 SF
05	Pet Supplies Plus	7,330 SF
09	Best Bagels Around	1,463 SF
10	T-Mobile	1,463 SF
11/12	Cafe Gia Pizza & Pasta	3,615 SF
14	May Garden	1,488 SF
15	AT&T	1,488 SF
17	Family Dollar	8,865 SF
18	Cute Nails	1,488 SF
19	Sunset Beach Tanning	1,488 SF
20	Stop & Shop	65,114 SF
27A	I-Fix Screens	1,605 SF
27B	Peapod	8,022 SF
29/30	Rainbow	8,508 SF
32	Chiropractor & Physical	1,933 SF
33	Sunshine Square Wine & Liquor	2,976 SF
34	Sunshine Cleaners	1,440 SF
35	Sunshine Mall Laundromat	1,440 SF
37	Savers	29,016 SF
38	Planet Fitness	25,000 SF