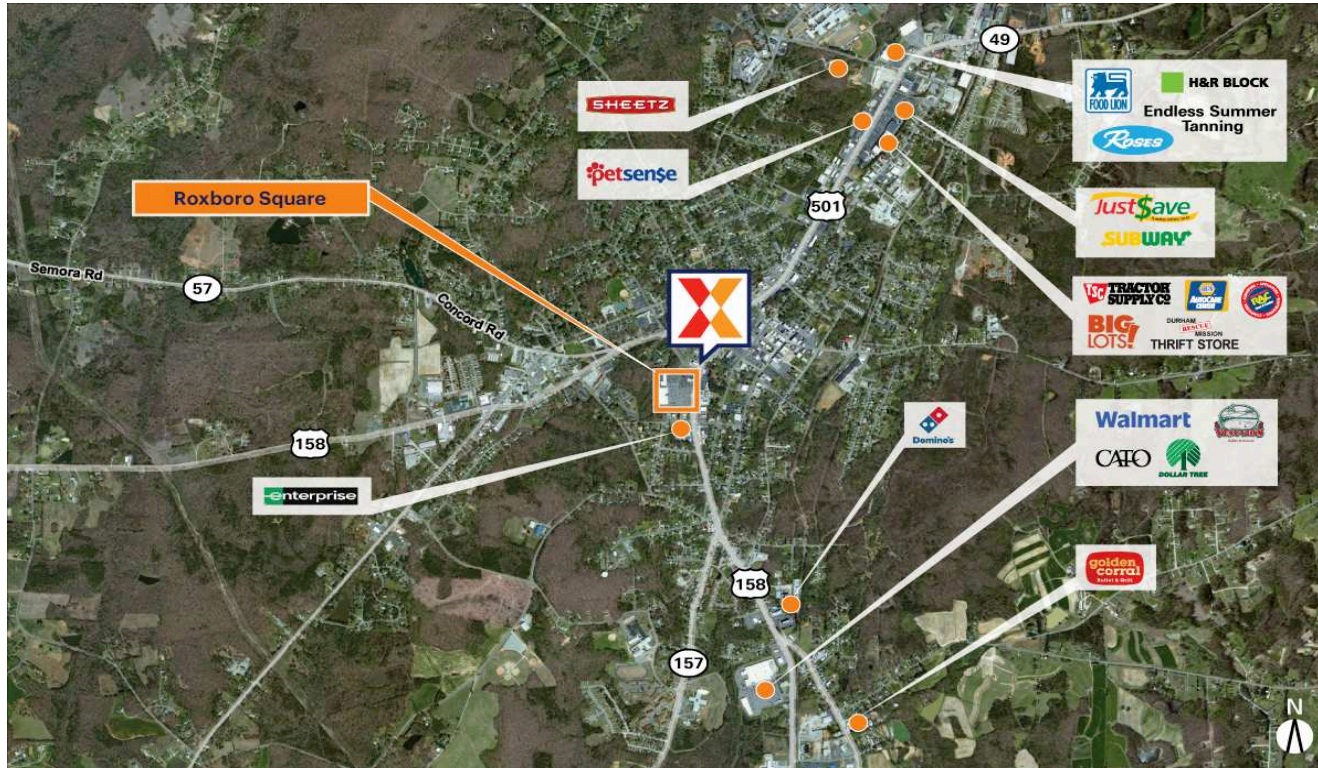


Roxboro Square

Durham-Chapel Hill, NC

36.3916, -78.9899

355 South Madison Boulevard | Roxboro, NC 27573



Center Size: 97,226 SF



Demographics	1 Mile	3 Mile	5 Mile
	3,992	12,224	19,156
	1,763	5,219	8,034
	\$60,894	\$67,355	\$69,912

Strategically located on Madison Blvd/Hwy 501, Roxboro's retail corridor near downtown Roxboro and 30 miles North of Durham, North Carolina

Consistent traffic draw to Person County Health & Human Services, ancillary medical uses and restaurants

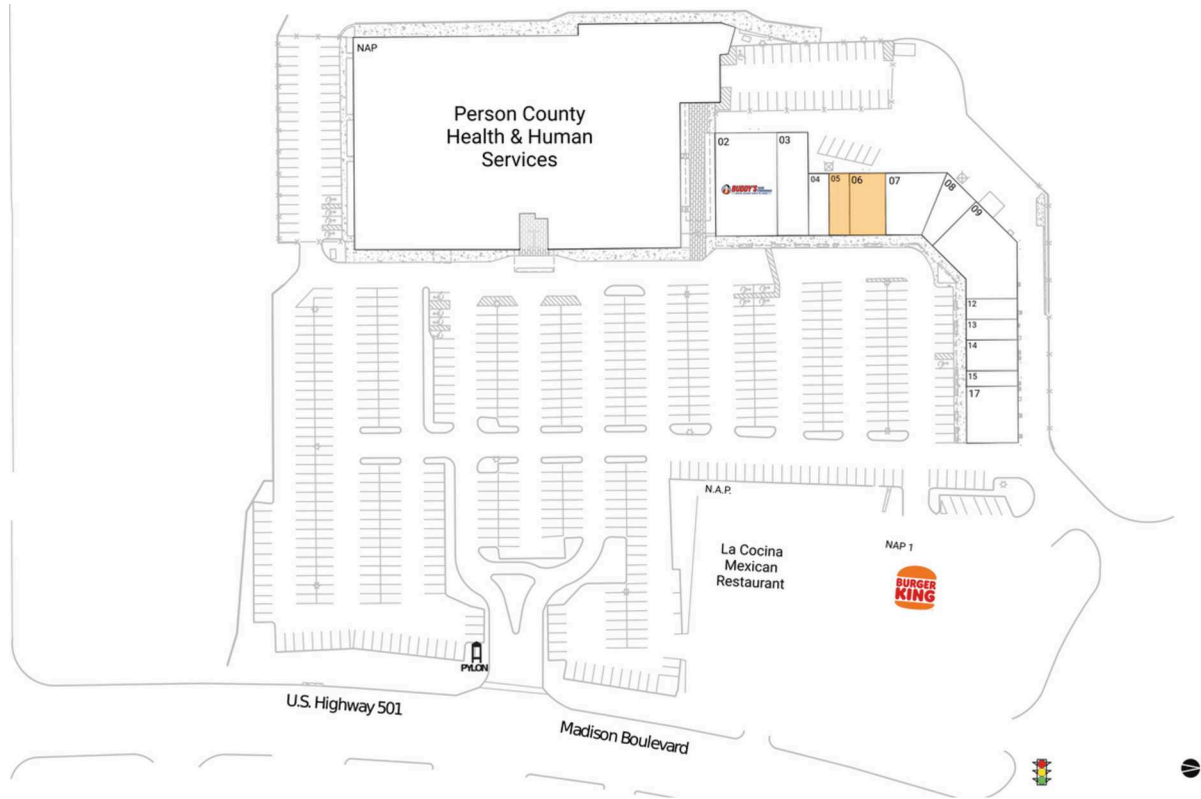
Roxboro businesses include LED lighting, law firms, electrical, textile, manufacturing, aerodynamics, automotive, aluminum and paper products.

Roxboro Square

Durham-Chapel Hill, NC

36.3916, -78.9899

355 South Madison Boulevard | Roxboro, NC 27573



Available Space

05	1,200 SF
06	2,100 SF

Current Retailers

N.A.P.	La Cocina Mexican Restaurant	0 SF
NAP	Person County Health & Human Services	0 SF
NAP 1	Burger King	0 SF
02	Buddy's Home Furnishings	6,000 SF
03	Total Smiles of Roxboro	3,000 SF
04	Ron Corlew Agency	1,200 SF
07	Roxboro Physical Therapy	2,850 SF
08	Jolly Nail	1,545 SF
09	Taste of NY Deli & Pizza	5,005 SF
12	Liberty Tax Service	1,000 SF
13	Hong Kong Restaurant	1,000 SF
14	United Home Care	1,500 SF
15	New Southern Loans	750 SF
17	Copper Kettle Restaurant	2,750 SF

1255