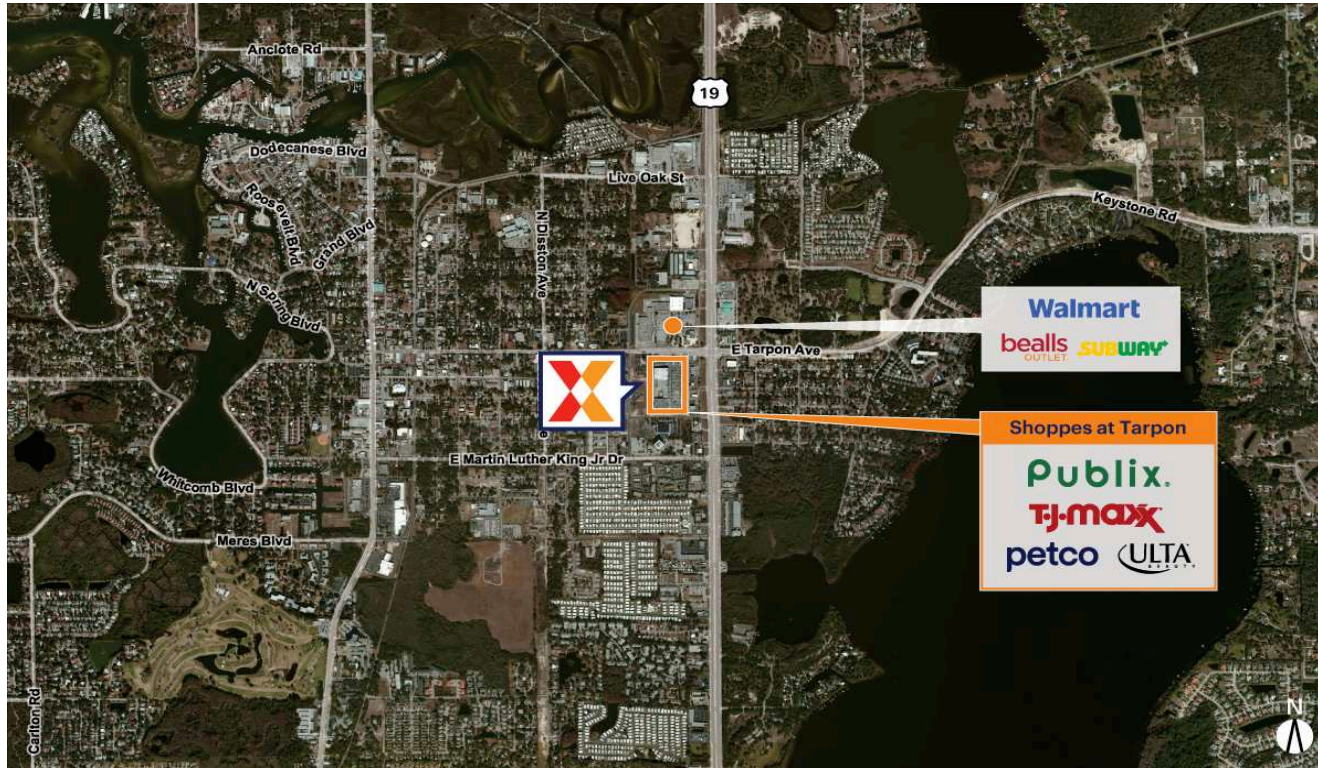


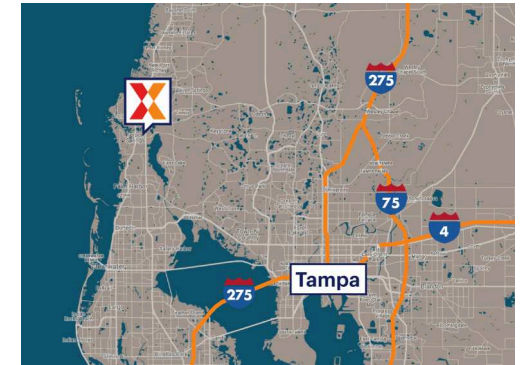
Shoppes at Tarpon

Tampa-St. Petersburg-Clearwater, FL

28.1445, -82.7423
40932 US Highway 19 N | Tarpon Springs, FL 34689



Center Size: 145,832 SF



Demographics	1 Mile	3 Mile	5 Mile
	7,956	55,013	138,226
	3,905	24,378	59,587
	\$80,447	\$106,767	\$100,643

High-trafficked center drawing an estimated 3.2M annual visits, the most-visited neighborhood center within 15 miles (Placer.ai 2024)

Publix anchor ranks in the top 25% of most-visited locations in FL

Strong mix of national tenants including T.J. Maxx, Ulta Beauty, and Petco

Highly visible to 81K+ vehicles daily along US 19 (Kalibrate 2021)

Shoppes at Tarpon

Tampa-St. Petersburg-Clearwater, FL

28.1445, -82.7423

40932 US Highway 19 N | Tarpon Springs, FL 34689



N.A.P.

Walmart

Current Retailers

FS-1	Little Greek Fresh Grill	1,450 SF
FS-2	Tropical Smoothie Cafe	1,500 SF
FS-2A	TD Bank	2,000 SF
FS-3	T-Mobile	1,580 SF
FS-4	Mattress Firm	3,769 SF
FS-4A	Jersey Mike's Subs	1,231 SF
N.A.P.	Walmart	0 SF
N.A.P.1	Bank of America	0 SF
N.A.P.2	Wendy's	0 SF
01	Publix	44,840 SF
05	GNC	1,500 SF
06	The UPS Store	1,200 SF
07	Asia Nails	900 SF
09	Bright House Networks	3,900 SF
11	Club Pilates	1,500 SF
12	Smile Design	2,400 SF
13	Ulta Beauty	12,308 SF
14A	Petco	11,250 SF
17	T.J. Maxx	29,862 SF
17C	Panera Bread	4,934 SF
19	Goodyear	6,308 SF
20	Arby's	2,800 SF
21	Taco Bell	2,800 SF
22	Laundromat Express	1,500 SF
23	The Joint Chiropractic	1,500 SF
24	Great Clips	1,200 SF
26	China Taste	1,200 SF
27	Verizon Wireless	2,400 SF

1718