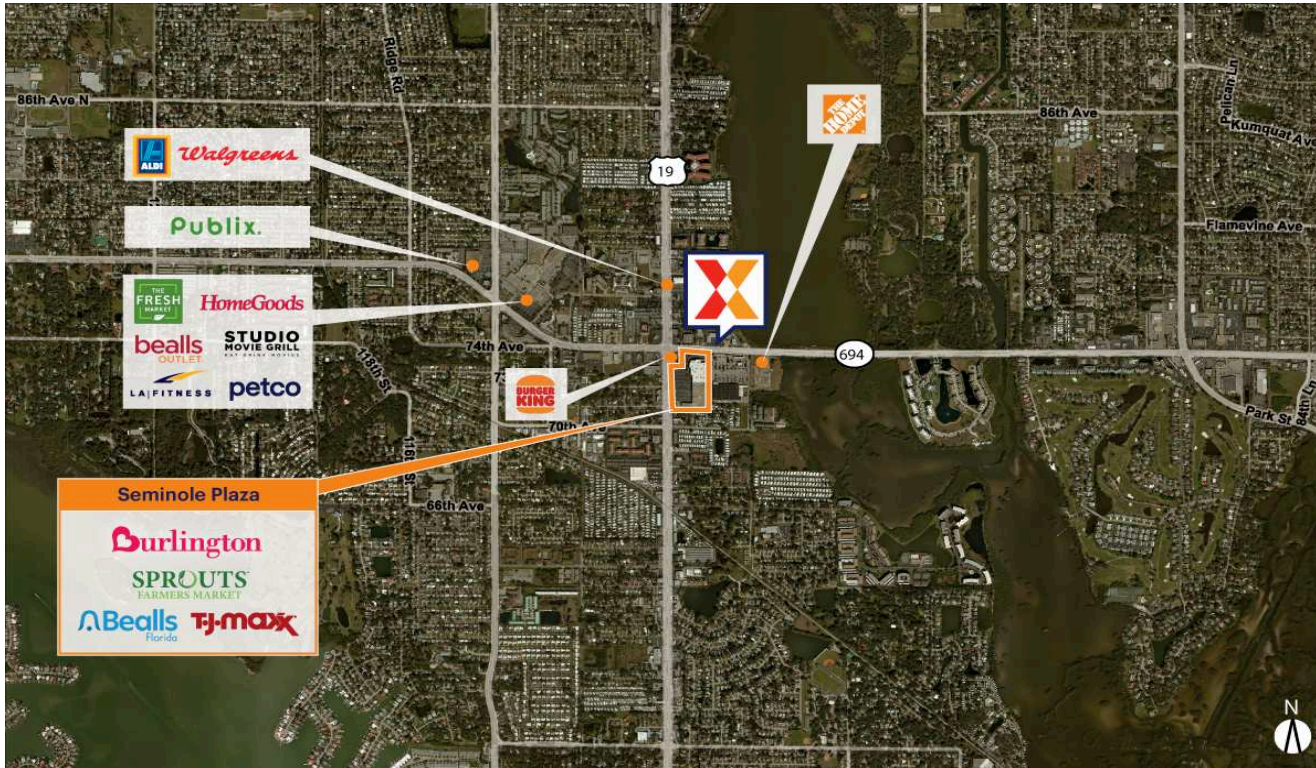


Seminole Plaza

Tampa-St. Petersburg-Clearwater, FL

27.8377, -82.7869

7191 Seminole Boulevard | Seminole, FL 32772



Center Size: 156,718 SF



Demographics	1 Mile	3 Mile	5 Mile
	12,398	81,442	207,307
	6,463	37,753	94,466
	\$86,616	\$104,861	\$95,794

Strong lineup of national tenants including Sprouts Farmers Market, T.J. Maxx, Burlington Stores, and Bealls Florida

High visibility from 49K+ vehicles daily on Park Blvd and 38K+ on Seminole Blvd (Kalibrate 2021)

Located in popular Seminole retail node

Seminole Plaza

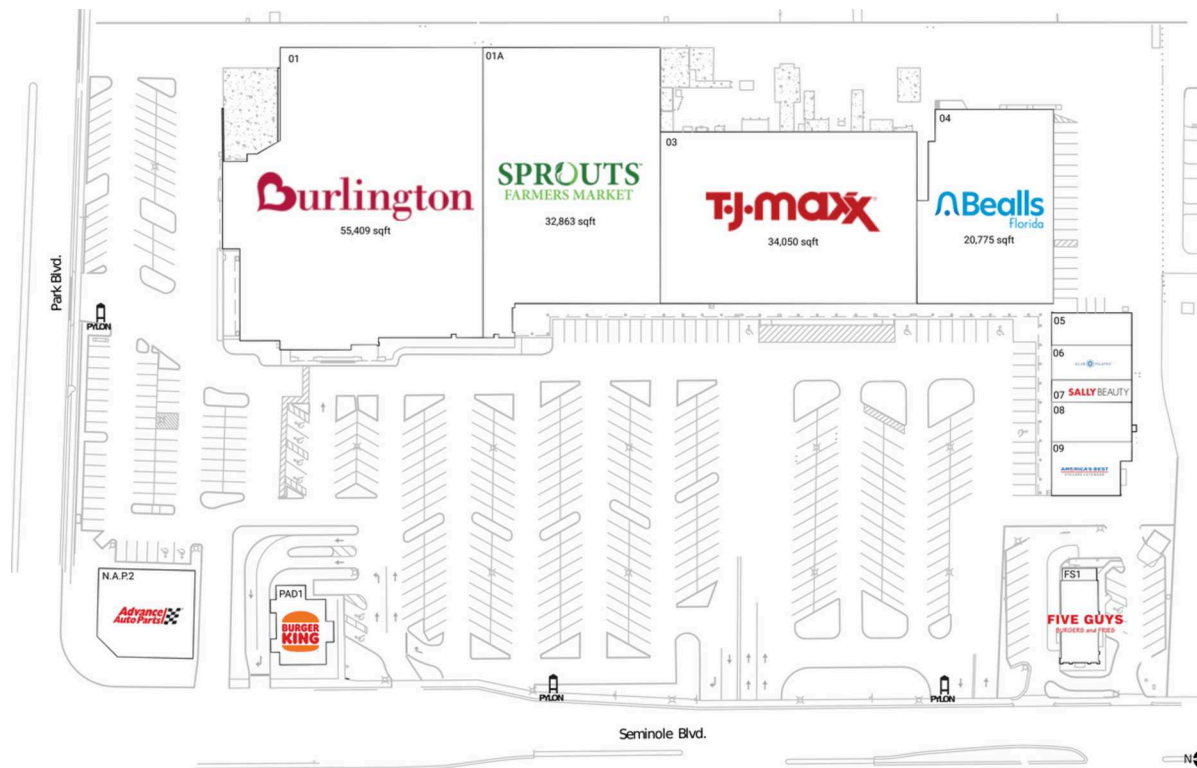
Tampa-St. Petersburg-Clearwater, FL

27.8377, -82.7869

7191 Seminole Boulevard | Seminole, FL 32772

Current Retailers

FS1	Five Guys	2,709 SF
N.A.P.2	Advance Auto Parts	0 SF
PAD1	Burger King	1,701 SF
01	Burlington	55,409 SF
01A	Sprouts Farmers Market	32,863 SF
03	T.J. Maxx	34,050 SF
04	Bealls Florida	20,775 SF
05	Kaizen Nail & Spa	1,990 SF
06	Club Pilates	2,140 SF
07	Sally Beauty Supply	1,380 SF
08	CosmoProf	2,450 SF
09	America's Best Contacts & Eyeglasses	2,800 SF



1155