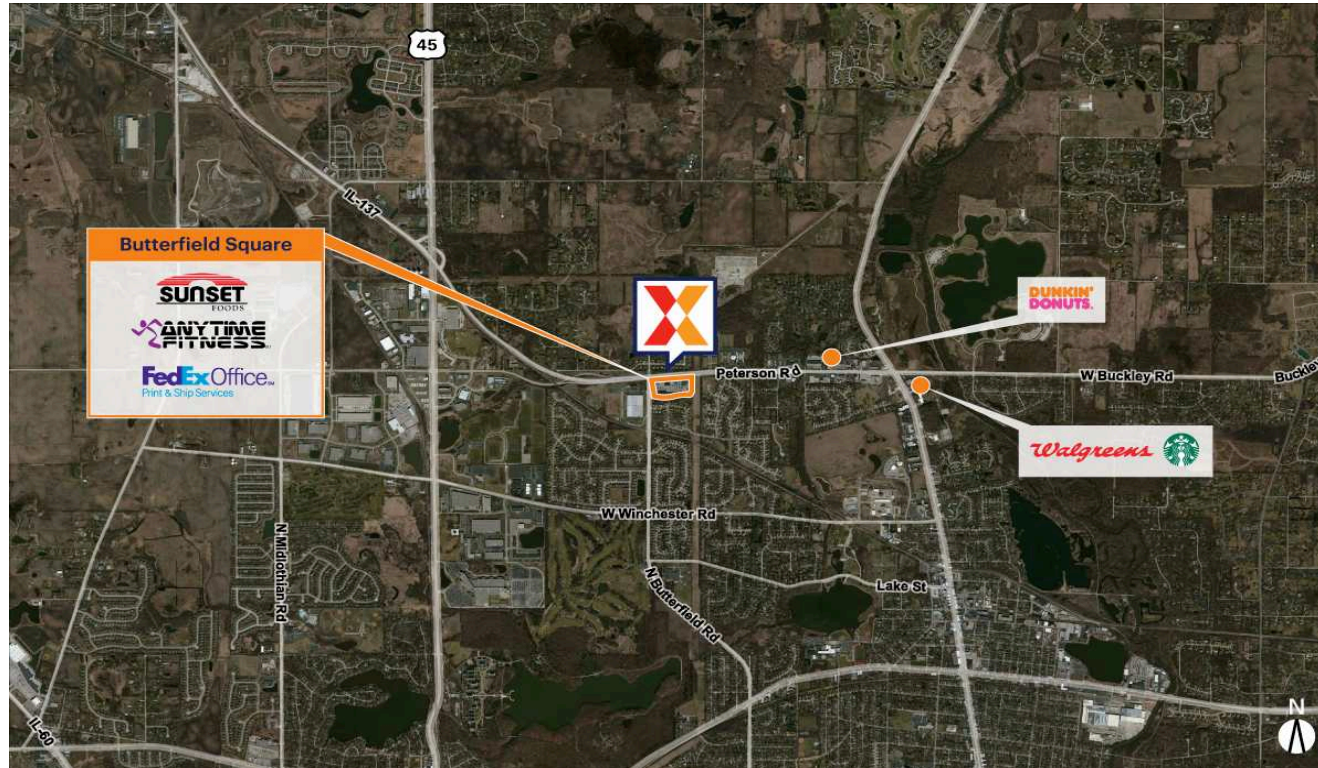


Butterfield Square

Chicago-Naperville-Elgin, IL-IN

42.3047, -87.9812

1413-1451 Peterson Road | Libertyville, IL 60048-1001



Center Size: 106,683 SF



Demographics	1 Mile	3 Mile	5 Mile
	4,035	41,314	126,392
	1,366	15,100	47,852
	\$236,283	\$158,160	\$139,008

Market-dominant neighborhood center anchored by Sunset Foods, a local customer-favorite grocer

Surrounded by an affluent and highly educated population with average household incomes of \$178K+ and 56% college-educated within a 3-mile radius

Strong daytime population of 47K+ within 3 miles

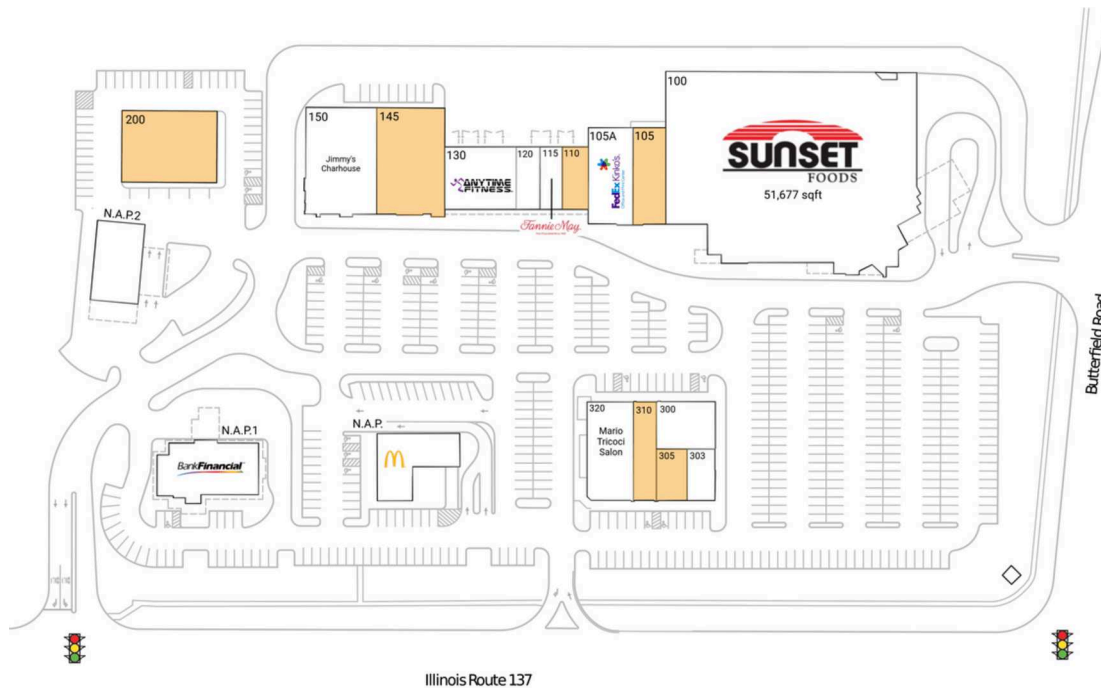
Located on the major east/west arterial, with high visibility of 29K+ vehicles daily on Peterson Rd/IL 137 (Kalibrate 2022)

Butterfield Square

Chicago-Naperville-Elgin, IL-IN

42.3047, -87.9812

1413-1451 Peterson Road | Libertyville, IL 60048-1001



Available Space

105	3,500 SF
110	1,800 SF
145	8,045 SF
200	7,500 SF
305	1,252 SF
310	2,500 SF

Current Retailers

N.A.P.	McDonald's	0 SF
N.A.P.1	BankFinancial	0 SF
N.A.P.2	A.W. Zengeler Cleaners	0 SF
100	Sunset Foods	51,677 SF
105A	FedEx Kinko's	4,500 SF
115	Fannie May Candies	1,527 SF
120	Meat n' Melt	1,625 SF
130	Anytime Fitness	4,898 SF
150	Jimmy's Charhouse	8,240 SF
300	Ivy Rehab	3,034 SF
303	Pikus Eye Care	1,585 SF
320	Mario Tricoci Salon	5,000 SF



4148