

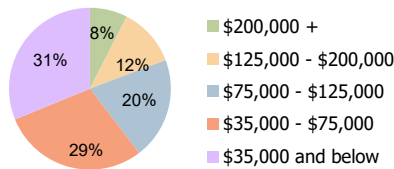
Victory Square Savannah, GA	1-Mile Radius	3-Mile Radius	5-Mile Radius
--------------------------------	---------------	---------------	---------------

Current Year Demographics

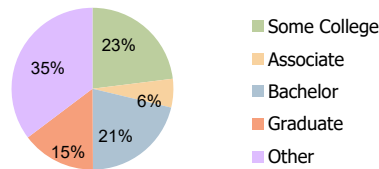
Current Population	12,449	77,639	125,797
Total Daytime Pop	11,065	107,879	183,935
Workplace Pop	4,709	41,710	76,710
Average Household Income	\$69,327	\$88,933	\$90,060
Average Disposable Income	\$58,511	\$67,341	\$67,404
Total Households	4,952	32,756	50,997
Median Home Value	\$250,284	\$363,270	\$348,294
College (4+)	26.8%	36.0%	33.7%
Total Consumer Spending/Capita (Weekly)	\$419	\$423	\$423
Population per Household	2.13	2.01	2.47
% of Households with Children	20.7%	19.9%	21.9%

2029 Demographic Projections

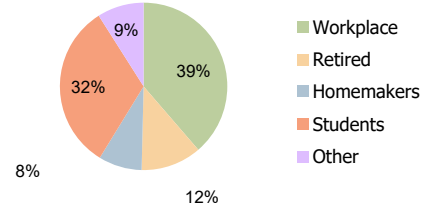
Projected Population	12,638	79,386	127,955
Projected 5 Year Annual Growth Rate (Pop)	0.3%	0.4%	0.3%



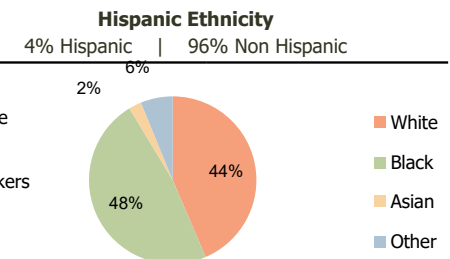
Household Income (3-Mile Radius)



Education (3-Mile Radius)



Daytime Population (3-Mile Radius)



Race (3-Mile Radius)

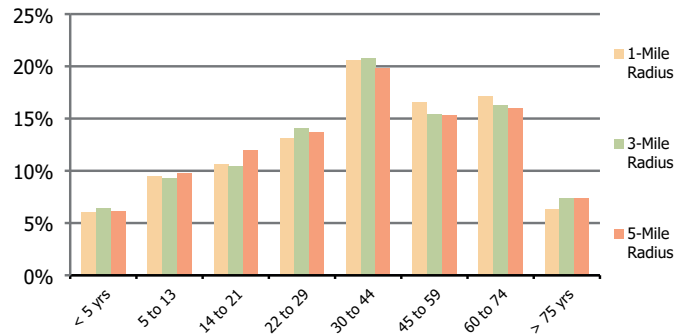
Victory Square
Savannah, GA

1-Mile Radius

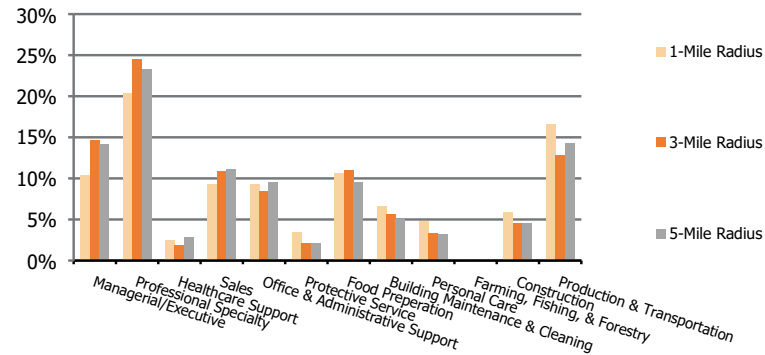
3-Mile Radius

5-Mile Radius

Population by Age Range



Occupation



Population	Current Estimated Population	12,449	77,639	125,797
	2010 Census Population	12,805	78,255	123,786
	2000 Census Population	13,754	79,972	125,745
	Historical Annual Growth 2000 to 2010	-0.7%	-0.2%	-0.2%
	Estimated Annual Growth 2010 to 2024	-0.2%	-0.1%	0.1%
	Projected Annual Growth 2024 to 2029	0.3%	0.4%	0.3%
Ethnic	Hispanic or Latino Population	4%	4%	5%
	Non Hispanic or Latino Population	96%	96%	95%
Race	White	36.2%	43.6%	42.8%
	Black or African American	55.4%	47.8%	47.6%
	Asian & Pacific Islander	2.2%	2.5%	2.7%
	Other Races	6.3%	6.2%	6.8%