



# Demographic Summary Report

2020 Census, 2024 Estimates & 2029 Projections  
 Calculated using TAS Retrieval

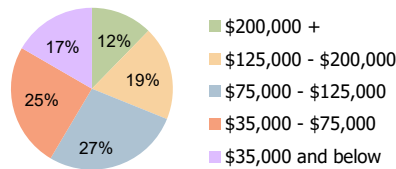
| Belfair Towne Village<br>Bluffton, SC | 1-Mile Radius | 3-Mile Radius | 5-Mile Radius |
|---------------------------------------|---------------|---------------|---------------|
|---------------------------------------|---------------|---------------|---------------|

## Current Year Demographics

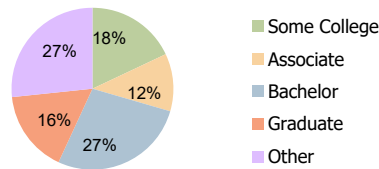
|   |           |           |           |
|---|-----------|-----------|-----------|
| Current Population                      | 5,833     | 26,575    | 49,300    |
| Total Daytime Pop                       | 7,921     | 27,858    | 48,797    |
| Workplace Pop                           | 3,988     | 10,656    | 14,793    |
| Average Household Income                | \$93,615  | \$112,132 | \$129,289 |
| Average Disposable Income               | \$79,137  | \$88,772  | \$95,393  |
| Total Households                        | 2,328     | 10,381    | 19,304    |
| Median Home Value                       | \$586,967 | \$610,074 | \$642,086 |
| College (4+)                            | 37.2%     | 43.8%     | 46.6%     |
| Total Consumer Spending/Capita (Weekly) | \$453     | \$464     | \$474     |
| Population per Household                | 2.13      | 2.01      | 2.47      |
| % of Households with Children           | 33.5%     | 31.0%     | 27.8%     |

## 2029 Demographic Projections

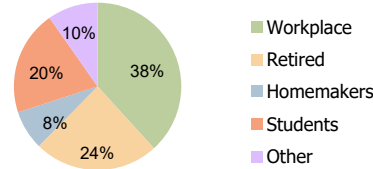
|   |       |        |        |
|---|-------|--------|--------|
| Projected Population                      | 6,195 | 28,355 | 53,167 |
| Projected 5 Year Annual Growth Rate (Pop) | 1.2%  | 1.3%   | 1.5%   |



Household Income (3-Mile Radius)



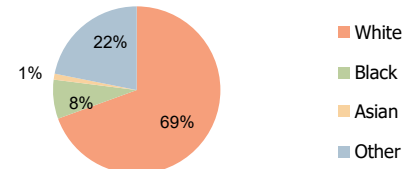
Education (3-Mile Radius)



Daytime Population (3-Mile Radius)

### Hispanic Ethnicity

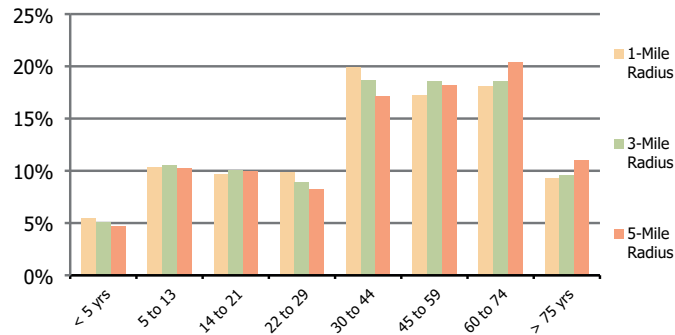
24% Hispanic | 76% Non Hispanic



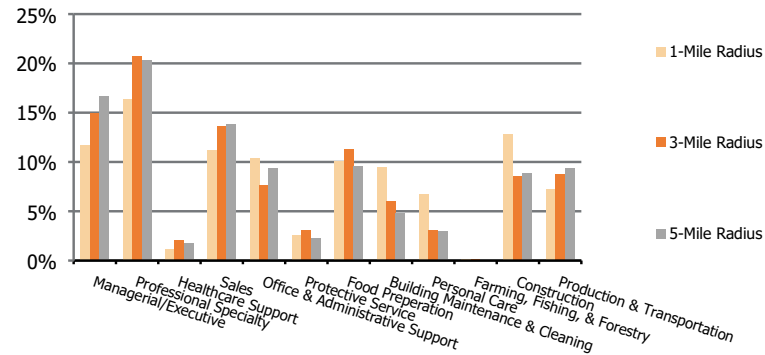
Race (3-Mile Radius)

|  |                      |                      |                      |
|--|----------------------|----------------------|----------------------|
| <b>Belfair Towne Village</b><br>Bluffton, SC | <b>1-Mile Radius</b> | <b>3-Mile Radius</b> | <b>5-Mile Radius</b> |
|--|----------------------|----------------------|----------------------|

**Population by Age Range**



**Occupation**



|                   |                                       |       |        |        |
|-------------------|---------------------------------------|-------|--------|--------|
| <b>Population</b> | Current Estimated Population          | 5,833 | 26,575 | 49,300 |
|                   | 2010 Census Population                | 5,100 | 21,032 | 35,400 |
|                   | 2000 Census Population                | 2,381 | 8,619  | 13,929 |
|                   | Historical Annual Growth 2000 to 2010 | 7.9%  | 9.3%   | 9.8%   |
|                   | Estimated Annual Growth 2010 to 2024  | 0.9%  | 1.7%   | 2.4%   |
|                   | Projected Annual Growth 2024 to 2029  | 1.2%  | 1.3%   | 1.5%   |
| <b>Ethnic</b>     | Hispanic or Latino Population         | 30%   | 24%    | 18%    |
|                   | Non Hispanic or Latino Population     | 70%   | 76%    | 82%    |
| <b>Race</b>       | White                                 | 63.5% | 69.4%  | 74.3%  |
|                   | Black or African American             | 9.2%  | 7.6%   | 6.8%   |
|                   | Asian & Pacific Islander              | 0.7%  | 1.1%   | 1.3%   |
|                   | Other Races                           | 26.6% | 21.9%  | 17.6%  |