

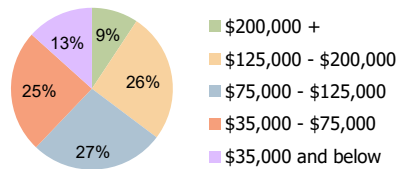
Wilmington Island Wilmington Island, GA	1-Mile Radius	3-Mile Radius	5-Mile Radius
--	---------------	---------------	---------------

### Current Year Demographics

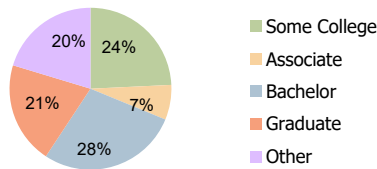
Current Population	7,145	22,219	30,886
Total Daytime Pop	4,993	14,930	21,634
Workplace Pop	1,304	2,779	4,698
Average Household Income	\$105,721	\$123,503	\$127,158
Average Disposable Income	\$84,948	\$91,127	\$91,658
Total Households	3,066	9,474	12,789
Median Home Value	\$469,934	\$508,361	\$528,291
College (4+)	46.7%	48.5%	48.3%
Total Consumer Spending/Capita (Weekly)	\$452	\$457	\$457
Population per Household	2.13	2.01	2.47
% of Households with Children	22.3%	24.4%	24.9%

### 2029 Demographic Projections

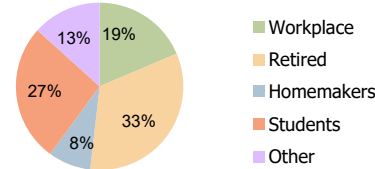
Projected Population	6,994	21,762	30,513
Projected 5 Year Annual Growth Rate (Pop)	-0.4%	-0.4%	-0.2%



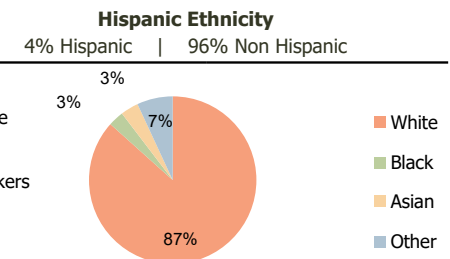
Household Income (3-Mile Radius)



Education (3-Mile Radius)



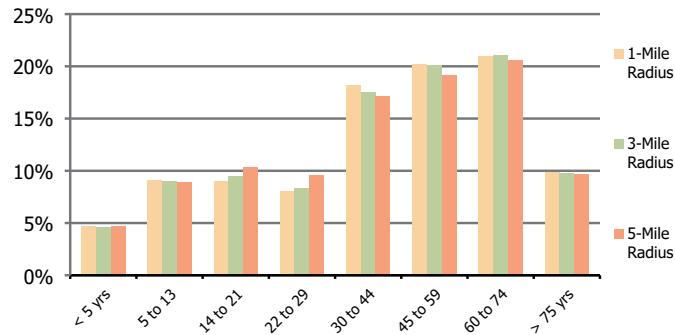
Daytime Population (3-Mile Radius)



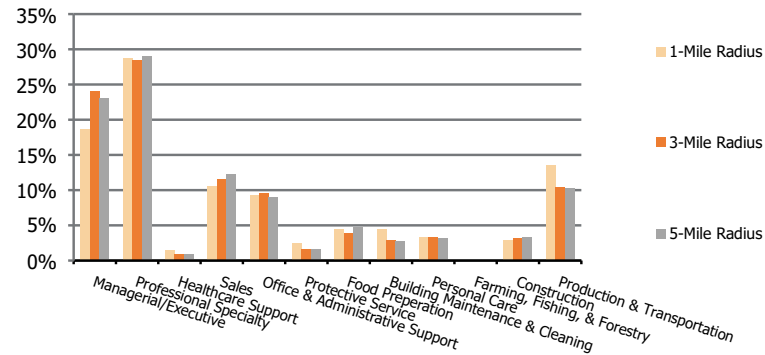
Race (3-Mile Radius)

<b>Wilmington Island</b> Wilmington Island, GA	<b>1-Mile Radius</b>	<b>3-Mile Radius</b>	<b>5-Mile Radius</b>
---	----------------------	----------------------	----------------------

**Population by Age Range**



**Occupation**



<b>Population</b>	Current Estimated Population	7,145	22,219	30,886
	2010 Census Population	6,466	21,263	31,242
	2000 Census Population	7,214	20,214	28,866
	Historical Annual Growth 2000 to 2010	-1.1%	0.5%	0.8%
	Estimated Annual Growth 2010 to 2024	0.7%	0.3%	-0.1%
	Projected Annual Growth 2024 to 2029	-0.4%	-0.4%	-0.2%
<b>Ethnic</b>	Hispanic or Latino Population	3%	4%	4%
	Non Hispanic or Latino Population	97%	96%	96%
<b>Race</b>	White	87.3%	86.6%	81.5%
	Black or African American	2.4%	3.0%	8.2%
	Asian & Pacific Islander	2.9%	3.5%	3.4%
	Other Races	7.5%	6.9%	7.0%