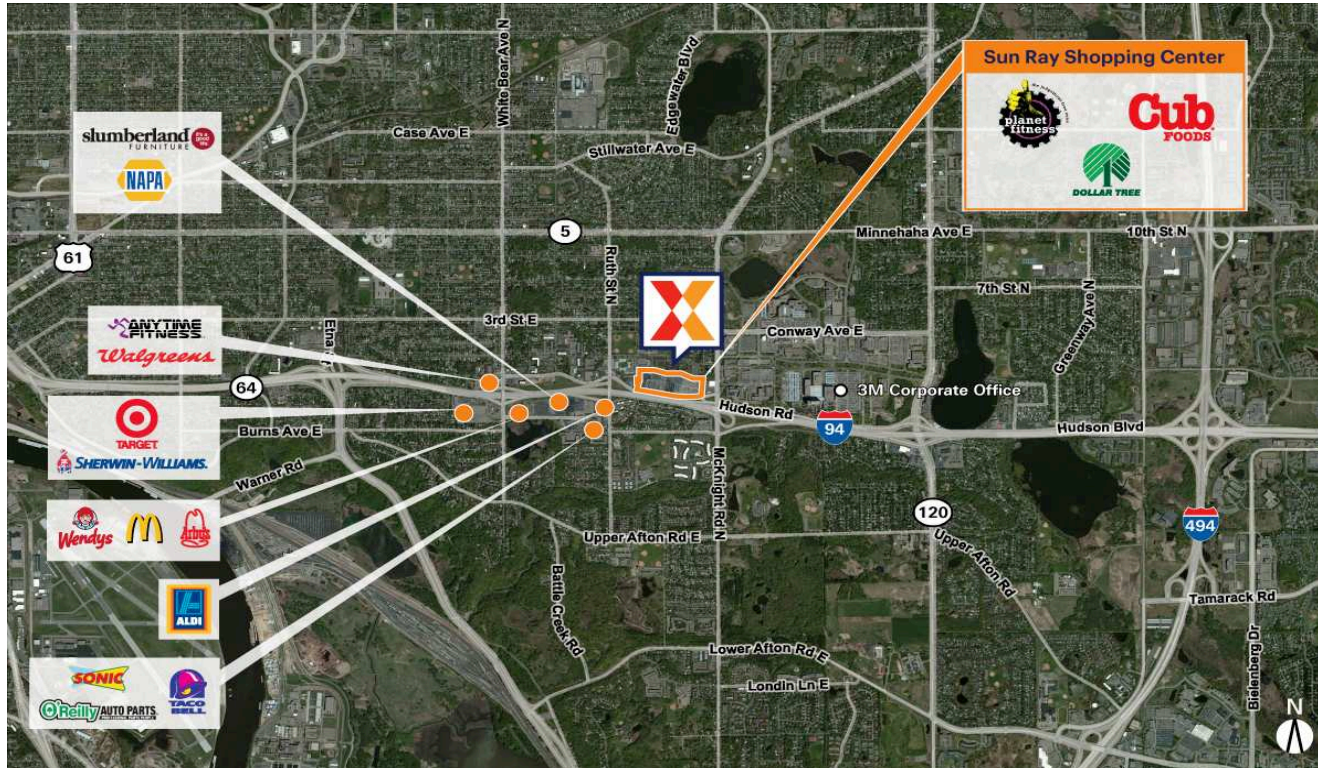


Sun Ray Shopping Center

Minneapolis-St. Paul-Bloomington, MN-WI

44.9517, -93.0092
2089-2215 Old Hudson Road | St. Paul, MN 55119-4406



Center Size: 290,897 SF



Demographics	1 Mile	3 Mile	5 Mile
	14,650	105,776	271,391
	5,452	37,206	101,405
	\$80,054	\$90,732	\$99,153

Anchored by 65,808 Sq Ft Cub Foods, along with strong national brands such as Ross Dress for Less, Burlington, Five Below & Planet Fitness

Surrounded by a dense population of 166K+ within a 3-mile radius

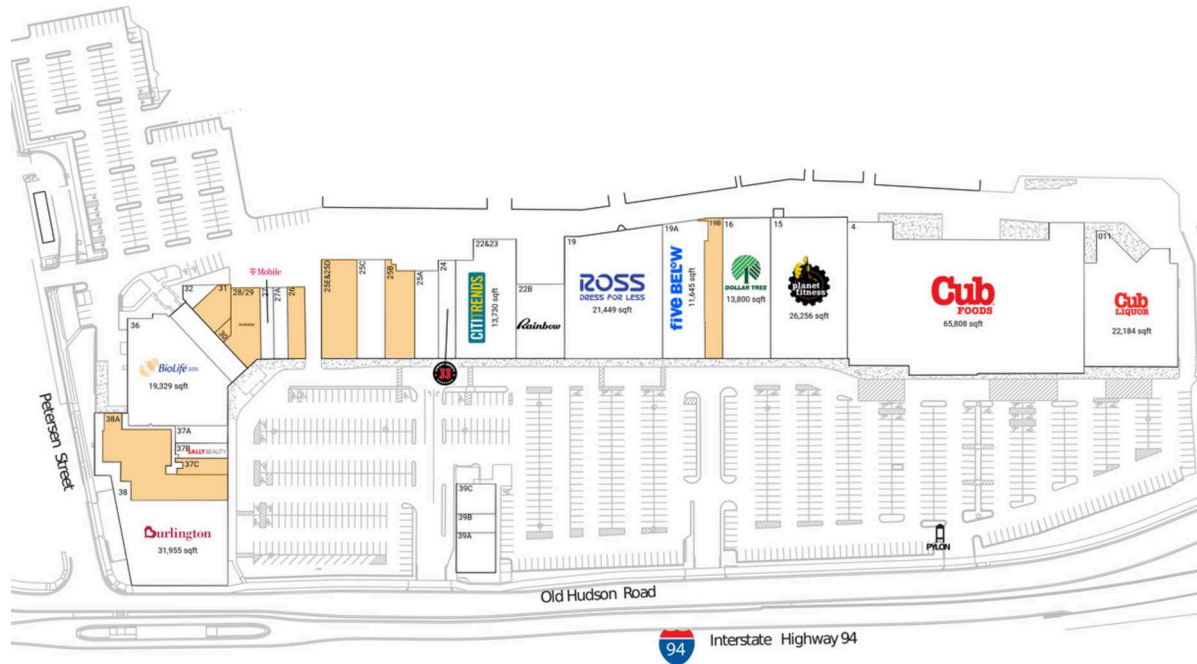
High visibility from 93K+ vehicles daily on I-94 and 19K+ on N McKnight Rd with convenient accessibility to the east side of St. Paul (Kalibrate 2022)

Less than one mile from 3M corporate headquarters

Sun Ray Shopping Center

Minneapolis-St. Paul-Bloomington, MN-WI

44.9517, -93.0092
2089-2215 Old Hudson Road | St. Paul, MN 55119-4406



Available Space

19B	5,807 SF
25B	5,141 SF
25E&25D	7,344 SF
26	2,550 SF
28/29	3,864 SF
30	425 SF
31	2,343 SF
37C	1,549 SF
38A	0 SF

Current Retailers

4	Cub Foods	65,808 SF
011	Cub Liquor	22,184 SF
15	Planet Fitness	26,256 SF
16	Dollar Tree	13,800 SF
19	Ross Dress for Less	21,449 SF
19A	Five Below	11,645 SF
22&23	Citi Trends	13,730 SF
22B	Rainbow	7,040 SF
24	Jimmy John's	3,430 SF
25A	Chicago Nails	4,220 SF
25C	DTLR	5,658 SF
27	T-Mobile	1,903 SF
27A	Smokes Vapor Zone	2,050 SF
32	SouthEast Community Organization	1,176 SF
36	BioLife	19,329 SF
37A	Tiffany's Barbershop	1,762 SF
37B	Sally Beauty Supply	1,521 SF
38	Burlington	31,955 SF
39A	LeAnne Chin	3,200 SF
39B	Domino's Pizza	1,500 SF
39C	Bruegger's Bagels	2,400 SF

4185