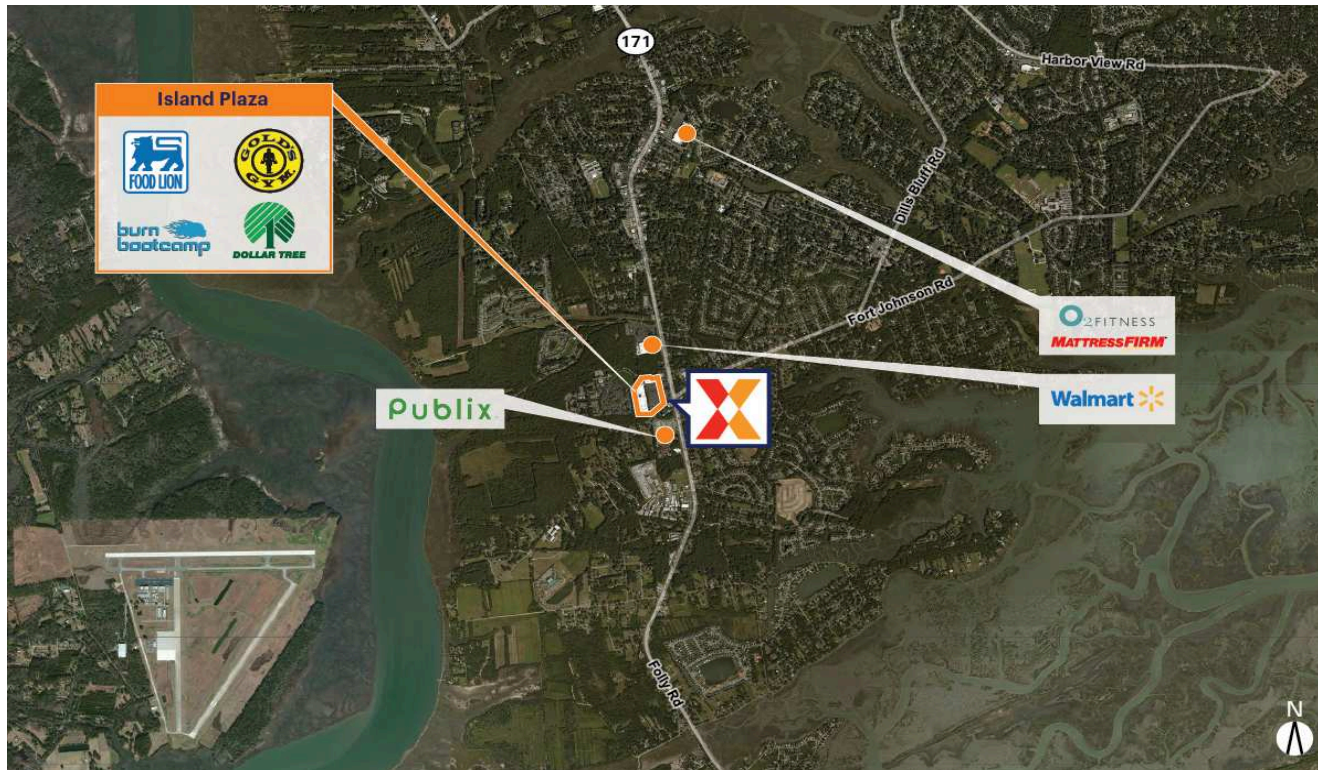


# Island Plaza

Charleston-North Charleston, SC

32.7172, -79.9658

1291 Folly Road | James Island, SC 29412



Center Size: 173,524 SF



Demographics	1 Mile	3 Mile	5 Mile
	7,272	32,208	62,945
	3,109	14,208	27,829
	\$90,574	\$93,464	\$103,154

Food Lion-anchored center with a strong lineup of national retailers including Dollar Tree, Tuesday Morning, Hibbett Sports, Cato, Gold's Gym, Sally Beauty Supply & GNC

Easily accessible center with multiple points of ingress/egress and close proximity to James Island Expressway

Surrounded by an affluent population with an average household income of \$93,000+ within 3 miles

# Island Plaza

Charleston-North Charleston, SC

32.7172, -79.9658

1291 Folly Road | James Island, SC 29412

## Available Space

3B	1,800 SF
07	1,600 SF
11	3,200 SF
14	1,200 SF

## Current Retailers

N.A.P.	Bank Of America	0 SF
N.A.P.1	Lucky's Southern Grill Restaurant	0 SF
N.A.P.2	Walmart	0 SF
N.A.P.3	Publix	0 SF
PAD A	Autobell Car Wash	0 SF
01	Famulari's Pizzeria Brewpub	5,656 SF
01A	Gold's Gym	44,344 SF
1B	Dollar Tree	17,720 SF
1C	Tuesday Morning	26,680 SF
03A	Burn Boot Camp	6,400 SF
05	Food Lion	37,854 SF
06	NAPA Auto Parts	8,450 SF
08	Cato	4,800 SF
09	Nails So Dep!	3,000 SF
10	Forsberg Package Store	3,000 SF
12	Salon Bliss	1,200 SF
13	Great Wall	1,200 SF
15	Axis Chiropractic	1,200 SF
16	GNC	1,200 SF
17	Pick Thai Restaurant	1,220 SF



5179