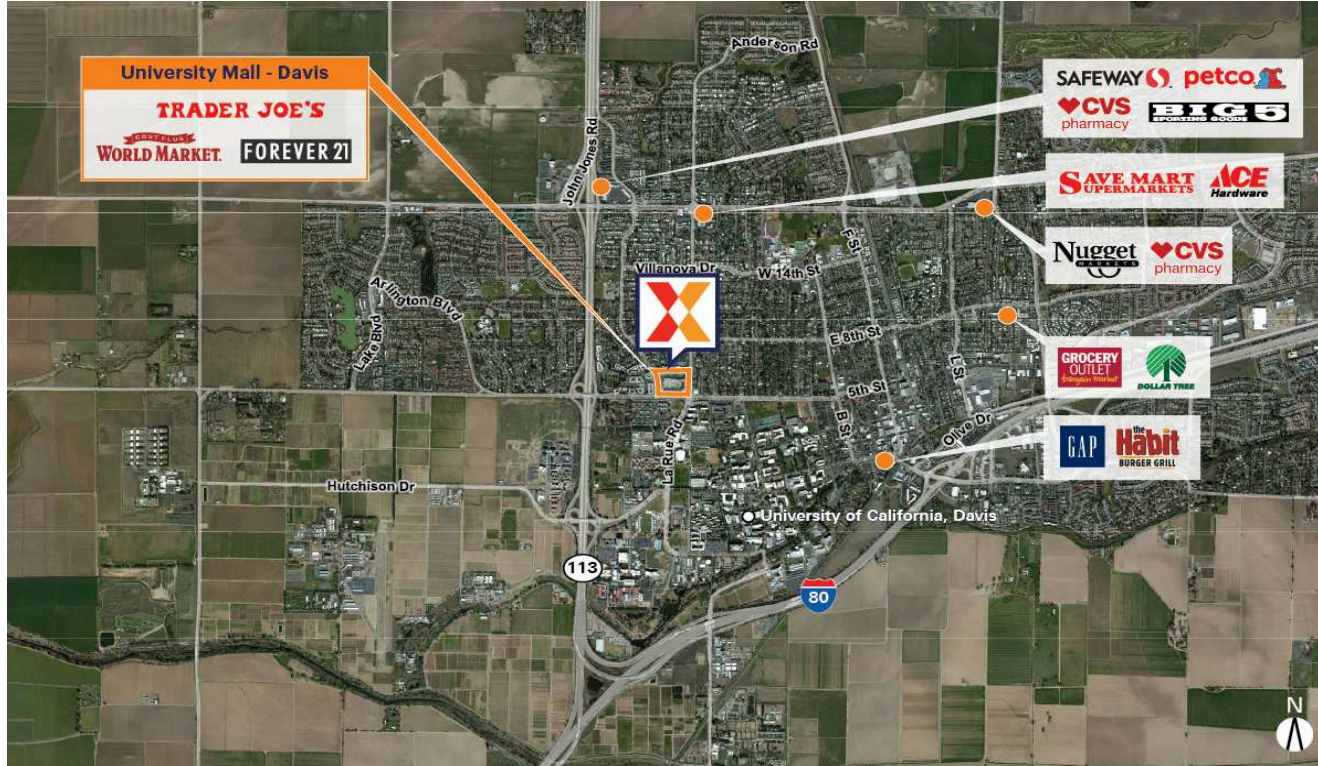


University Mall - Davis

Sacramento-Roseville-Folsom, CA

38.5471, -121.7603

737 - 885 Russell Boulevard & Anderson R | Davis, CA 95616



Center Size: 106,023 SF



Demographics	1 Mile	3 Mile	5 Mile
	22,142	71,799	81,087
	7,239	26,309	29,812
	\$95,660	\$100,125	\$106,875

Located across from the University of California, Davis with 34,000+ students and faculty

Situated at the city's busiest intersection of Russell Blvd & Anderson Rd with visibility from 21,000+ VPD and 15,000+ VPD at the intersection of Russell Blvd & Sycamore Lane

Anchored by Trader Joe's, Forever 21 & Cost Plus World Market, drawing shoppers from a wide trade area extending beyond city limits

University Mall - Davis

Sacramento-Roseville-Folsom, CA

38.5471, -121.7603

737 - 885 Russell Boulevard & Anderson R | Davis, CA 95616



Available Space

06	38,418 SF
13	3,720 SF
16	585 SF
18	400 SF
19	7,425 SF
22	1,555 SF

Pad Opportunities

PAD A	0 SF/0
-------	--------

Current Retailers

01	Trader Joe's	13,017 SF
03	Cost Plus World Market	20,000 SF
10	Ramin Hook	925 SF
11	T&M Bike Shop	1,574 SF
14	Davis Coworking	800 SF
17	EZ Eyebrow	940 SF
21	Ohana Hawaiian BBQ	950 SF
23	Old Tea House	1,133 SF
24	Sourdough & Co.	1,245 SF
25	Starbucks	1,435 SF
27	Baytel	1,912 SF
28	Fluffy Donuts	1,760 SF
29	Subway	1,214 SF
30	Lee's Deli	2,947 SF
40	Davis Coworking	2,328 SF
41	Bank Of America ATM	92 SF
44	Center For Collaborative Care	4,949 SF

4084