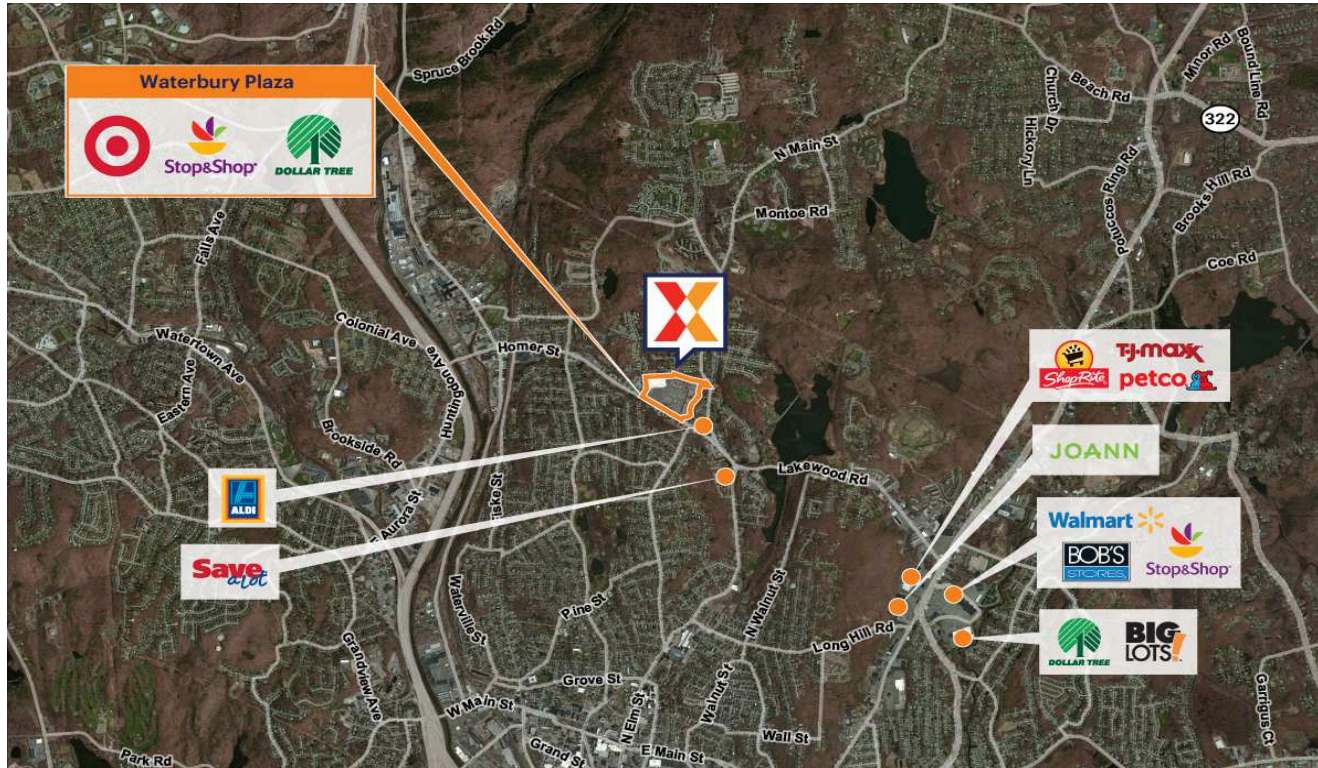


# Waterbury Plaza

New Haven-Milford, CT

41.5825, -73.0322

152-184 Chase Avenue | Waterbury, CT 06704



Center Size: 197,206 SF



| Demographics | 5 Mile   | 7 Mile   | 10 Mile  |
|--------------|----------|----------|----------|
|              | 150,478  | 217,200  | 358,494  |
|              | 57,785   | 83,073   | 138,570  |
|              | \$67,338 | \$77,412 | \$85,760 |

Retail locations for lease with easy access to Rte 8

Surrounded by a dense population of 151,000+ within a 5-mile radius

Highly trafficked retail center with a market dominant Super Stop & Shop that draws an average of 20,000+ customers/week

Strong lineup of national retailers including Target, Stop & Shop (with gas station), Anytime Fitness, McDonald's, Taco Bell, Aspen Dental and Sally Beauty Supply

# Waterbury Plaza

New Haven-Milford, CT

41.5825, -73.0322

152-184 Chase Avenue | Waterbury, CT 06704



## Available Space

|     |           |
|-----|-----------|
| 01  | 20,000 SF |
| 08  | 2,500 SF  |
| 13  | 2,000 SF  |
| 20  | 1,500 SF  |
| 21A | 2,608 SF  |
| 25  | 4,100 SF  |
| 29  | 1,063 SF  |

## Current Retailers

|         |                         |            |
|---------|-------------------------|------------|
| Fuel    | Stop & Shop Gas         | 1 SF       |
| N.A.P.  | Target                  | 124,237 SF |
| N.A.P.1 | Wells Fargo             | 0 SF       |
| 03      | Dollar Tree             | 10,270 SF  |
| 04      | Stop & Shop             | 66,062 SF  |
| 05      | Joeyz Shopping Spree    | 14,200 SF  |
| 06      | J&P Liquor & Wine Depot | 3,750 SF   |
| 07      | H&R Block               | 1,710 SF   |
| 09      | Tek Nails And Spa       | 1,539 SF   |
| 10      | Rainbow                 | 5,424 SF   |
| 11      | Anytime Fitness         | 7,500 SF   |
| 14      | Sally Beauty Supply     | 2,000 SF   |
| 14A     | GNC                     | 2,000 SF   |
| 15      | Aspen Dental            | 3,660 SF   |
| 16      | #1 Garden Restaurant    | 1,582 SF   |
| 17      | PCX                     | 8,300 SF   |
| 18      | Madrag                  | 5,000 SF   |
| 19      | Best Laurndromat        | 3,000 SF   |
| 21      | Santander Bank          | 3,823 SF   |
| 22      | Taco Bell               | 2,000 SF   |
| 23      | Bank Of America ATM     | 610 SF     |
| 24      | McDonald's              | 4,310 SF   |
| 26      | Subway                  | 1,200 SF   |
| 27      | MetroPCS                | 1,050 SF   |
| 28      | Tobacco City            | 945 SF     |

5151