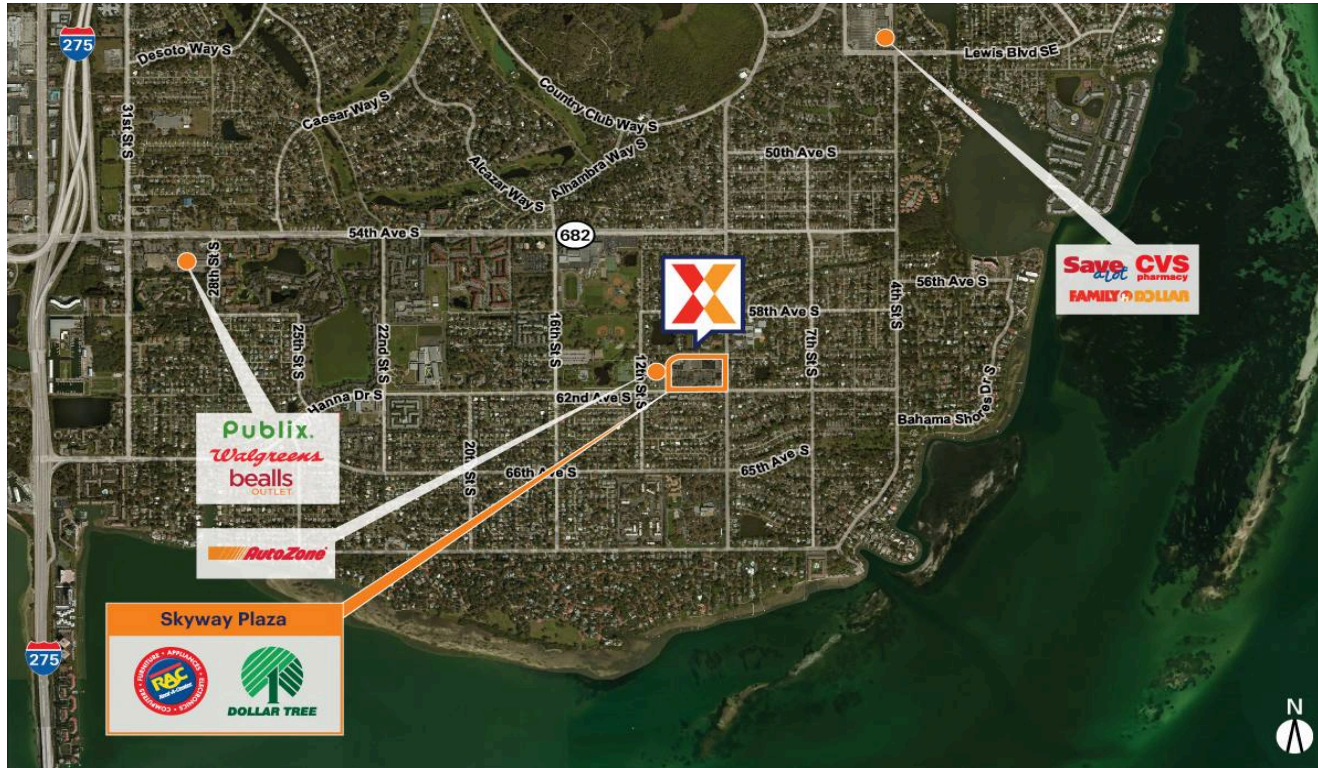


# Skyway Plaza

Tampa-St. Petersburg-Clearwater, FL

27.7122, -82.649

1079 62nd Avenue South | St. Petersburg, FL 33705



Center Size: 110,799 SF



Demographics	1 Mile	3 Mile	5 Mile
	13,870	50,516	115,259
	5,830	20,741	52,300
	\$64,604	\$63,344	\$66,604

Well-positioned neighborhood shopping center serving St. Petersburg

Easy access to I-275

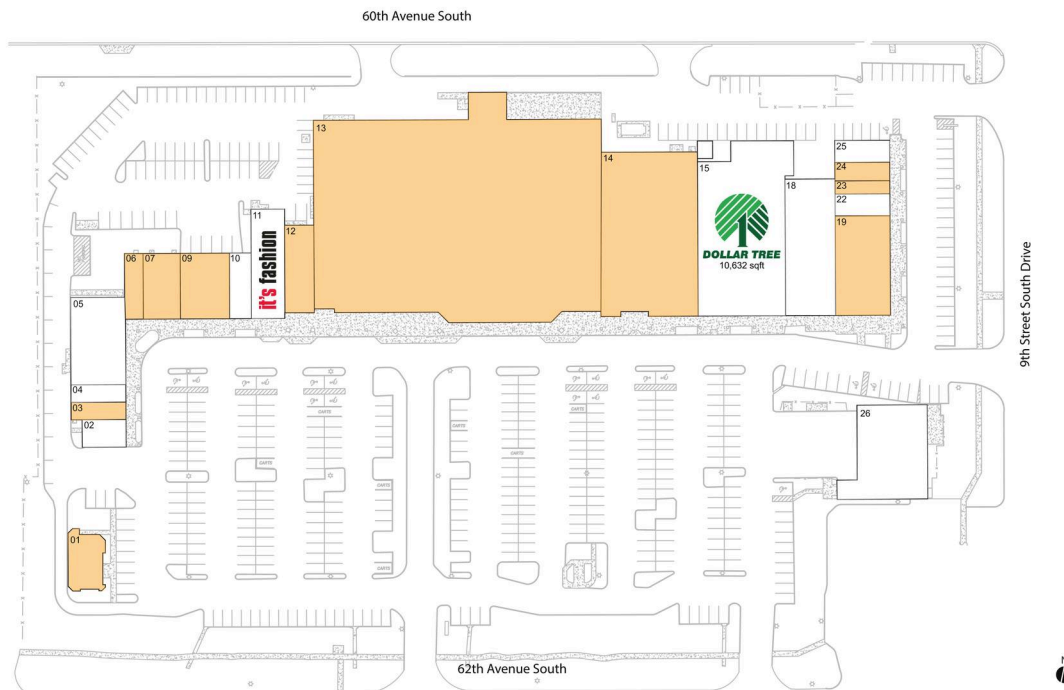
Close proximity to Eckerd College and Dixie M. Hollins High School with a combined enrollment of 4,000+ students

# Skyway Plaza

Tampa-St. Petersburg-Clearwater, FL

27.7122, -82.649

1079 62nd Avenue South | St. Petersburg, FL 33705



## Available Space

01	1,927 SF
03	800 SF
06	1,020 SF
07	2,040 SF
09	2,700 SF
12	2,027 SF
13	46,803 SF
14	13,000 SF
19	4,500 SF
23	600 SF
24	850 SF

## Current Retailers

ANT	Ridan Industries	1 SF
02	Heidi's Hair Braiding	1,000 SF
04	Hong Kong Restaurant	800 SF
05	Pinellas County Tax Collector	4,000 SF
10	Cell Touch	1,200 SF
11	It's Fashion	3,000 SF
15	Dollar Tree	10,632 SF
18	Amscot Financial	5,900 SF
22	Next Level Grooming	1,000 SF
25	Coin Laundry	1,000 SF
26	JC Automotive Service	6,000 SF

1646