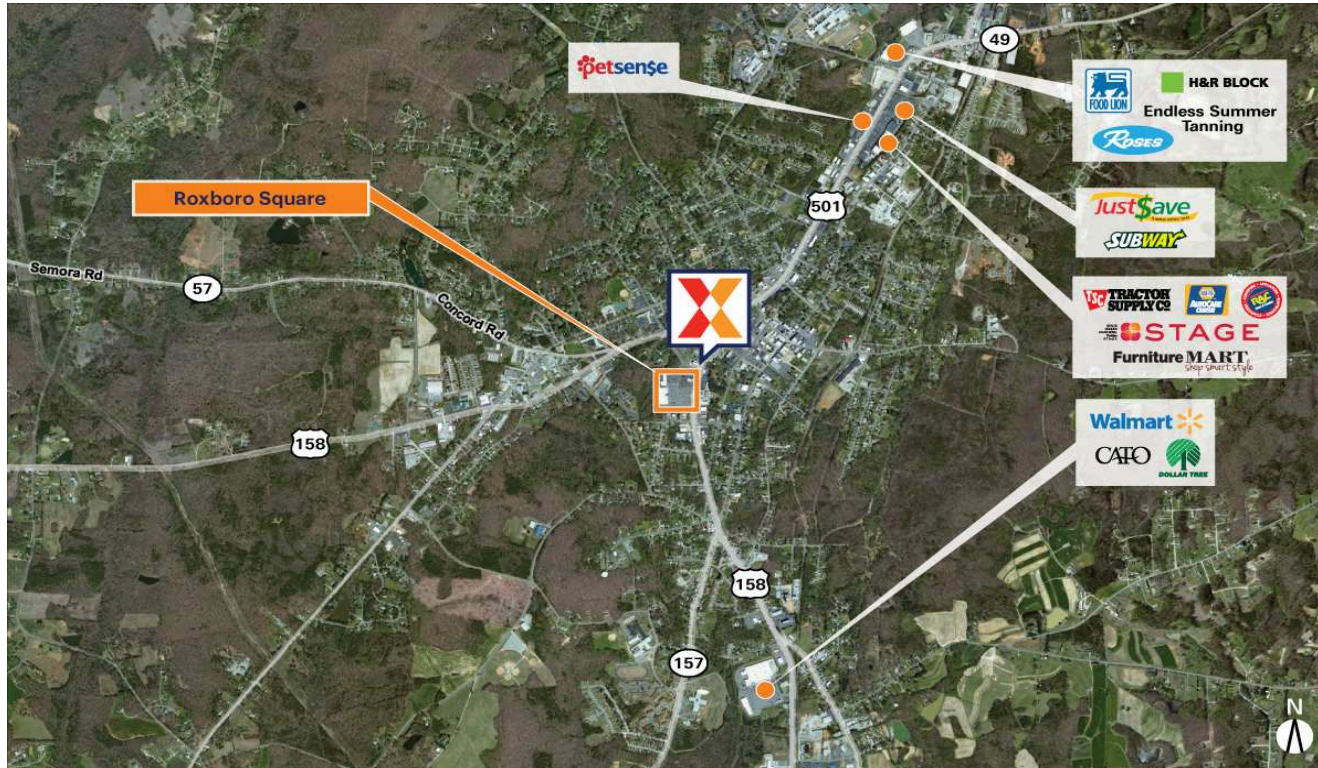


# Roxboro Square

Durham-Chapel Hill, NC

36.3916, -78.9899

355 South Madison Boulevard | Roxboro, NC 27573



Center Size: 97,226 SF



| Demographics | 1 Mile   | 3 Mile   | 5 Mile   |
|--------------|----------|----------|----------|
|              | 3,986    | 12,066   | 18,924   |
|              | 1,741    | 4,978    | 7,693    |
|              | \$43,546 | \$44,278 | \$50,276 |

Strategically located on Madison Blvd/Hwy 501, Roxboro's retail corridor

Consistent traffic draw to Person County Health & Human Services and ancillary medical uses

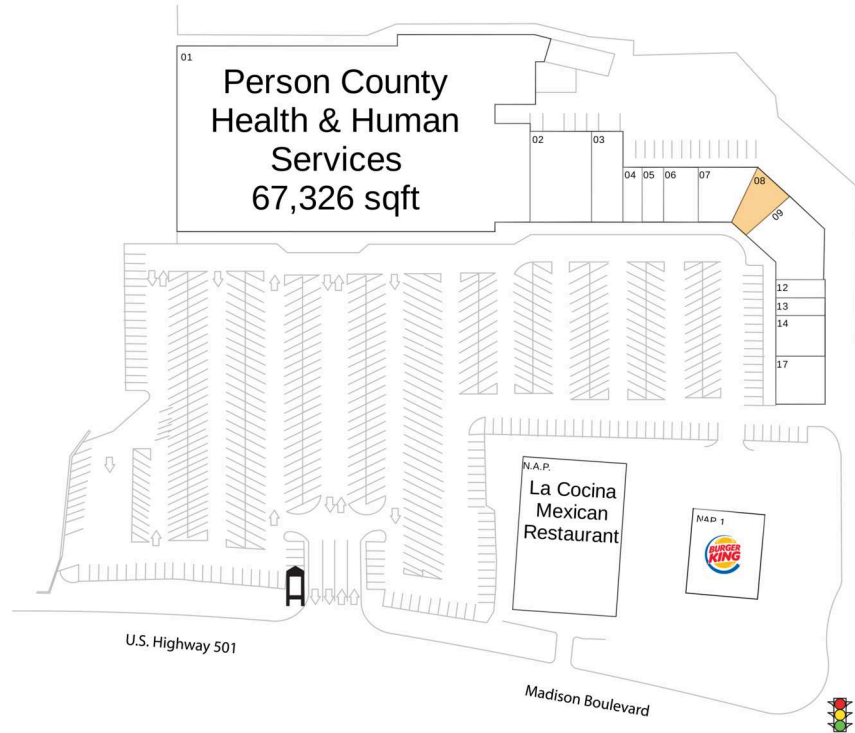
Close proximity to the 110-bed Person Memorial Hospital with 350+ employees

# Roxboro Square

Durham-Chapel Hill, NC

36.3916, -78.9899

355 South Madison Boulevard | Roxboro, NC 27573



## Available Space

08 1,545 SF

## Current Retailers

|        |                                       |           |
|--------|---------------------------------------|-----------|
| N.A.P. | La Cocina Mexican Restaurant          | 0 SF      |
| NAP 1  | Burger King                           | 0 SF      |
| 01     | Person County Health & Human Services | 67,326 SF |
| 02     | Korset Ladies Apparel                 | 6,000 SF  |
| 03     | Roxboro Family Dentistry              | 3,000 SF  |
| 04     | State Farm                            | 1,200 SF  |
| 05     | United Home Care                      | 1,200 SF  |
| 06     | Roxboro Sweepstakes                   | 2,100 SF  |
| 07     | Roxboro Physical Therapy              | 2,850 SF  |
| 09     | Mayflower Seafood                     | 5,005 SF  |
| 12     | Liberty Tax Service                   | 1,000 SF  |
| 13     | Hong Kong Restaurant                  | 1,000 SF  |
| 14     | Ameristaff, Inc.                      | 2,250 SF  |
| 17     | Eden's Grill                          | 2,750 SF  |



1255