

Annex of Arlington Arlington Heights, IL	1 Mile Radius	3 Mile Radius	5 Mile Radius
---	---------------	---------------	---------------

### Current Year Demographics

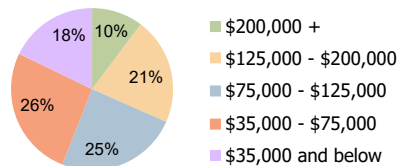
Current Population	13,408	134,210	307,970
Total Daytime Pop	15,342	151,099	391,067
Workplace Pop	7,559	79,174	216,267
Average Household Income	\$127,796	\$109,917	\$110,484
Average Disposable Income	\$98,153	\$85,342	\$84,673
Total Households	5,096	52,620	120,681
Median Home Value	\$479,693	\$368,557	\$374,450
College (4+)	59.3%	50.9%	50.2%
Total Consumer Spending/Capita (Weekly)	\$440	\$424	\$422
Population per Household	2.13	2.01	2.47
% of Households with Children	28.9%	27.6%	28.9%

### 2025 Demographic Projections

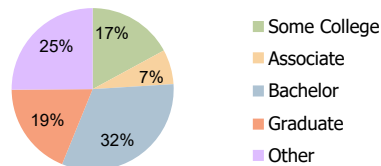
Projected Population	13,216	132,069	304,592
Projected 5 Year Annual Growth Rate (Pop)	-0.3%	-0.3%	-0.2%

### Hispanic Ethnicity

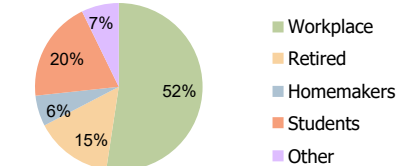
15% Hispanic | 85% Non Hispanic



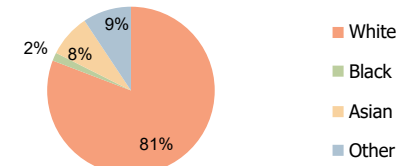
Household Income (3-Mile)



Education (3-Mile)



Daytime Population (3-Mile)



Race (3-Mile)

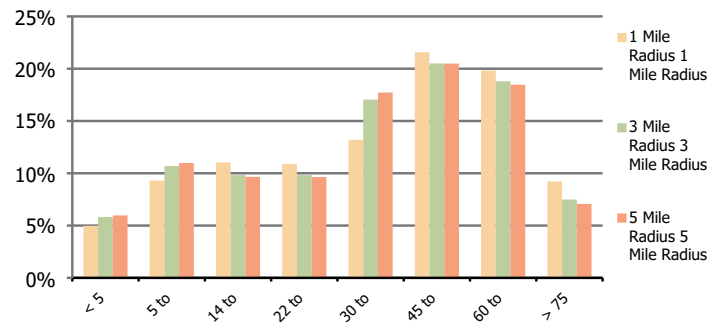
**Annex of Arlington**  
 Arlington Heights, IL

**1 Mile Radius**

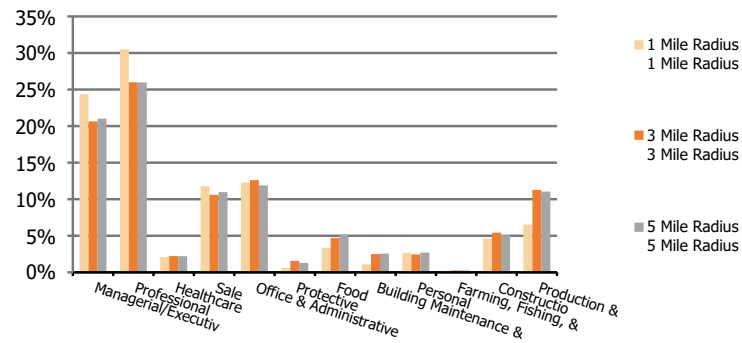
**3 Mile Radius**

**5 Mile Radius**

**Population by Age Range**



**Occupation**



<b>Population</b>	Current Estimated Population	13,408	134,210	307,970
	2010 Census Population	13,877	137,763	314,718
	2000 Census Population	14,282	141,110	316,392
	Historical Annual Growth 2000 to 2010	-0.3%	-0.2%	-0.1%
	Estimated Annual Growth 2010 to 2020	-0.3%	-0.3%	-0.2%
	Projected Annual Growth 2020 to 2025	-0.3%	-0.3%	-0.2%
<b>Ethnic</b>	Hispanic or Latino Population	5%	15%	15%
	Non Hispanic or Latino Population	95%	85%	85%
<b>Race</b>	White	86.5%	80.8%	77.5%
	Black or African American	0.9%	1.6%	2.1%
	Asian & Pacific Islander	9.2%	8.3%	11.2%
	Other Races	3.3%	9.3%	9.2%