

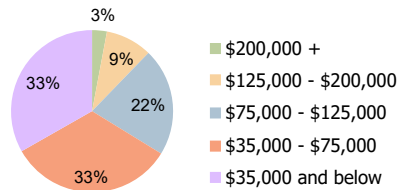
Carmel Village Corpus Christi, TX	1 Mile Radius	3 Mile Radius	5 Mile Radius
--------------------------------------	---------------	---------------	---------------

Current Year Demographics

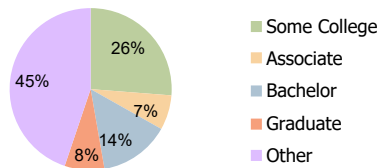
Current Population	14,905	116,491	234,050
Total Daytime Pop	16,917	128,619	250,075
Workplace Pop	7,689	50,183	96,254
Average Household Income	\$79,576	\$71,965	\$73,001
Average Disposable Income	\$62,471	\$58,837	\$60,086
Total Households	5,814	44,619	87,289
Median Home Value	\$131,043	\$134,624	\$141,750
College (4+)	24.3%	22.0%	22.5%
Total Consumer Spending/Capita (Weekly)	\$331	\$327	\$327
Population per Household	2.13	2.01	2.47
% of Households with Children	26.2%	27.5%	28.4%

2025 Demographic Projections

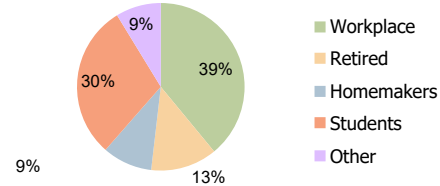
Projected Population	14,968	118,363	244,387
Projected 5 Year Annual Growth Rate (Pop)	0.1%	0.3%	0.9%



Household Income (3-Mile)



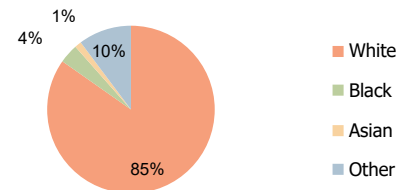
Education (3-Mile)



Daytime Population (3-Mile)

Hispanic Ethnicity

65% Hispanic | 35% Non Hispanic



Race (3-Mile)

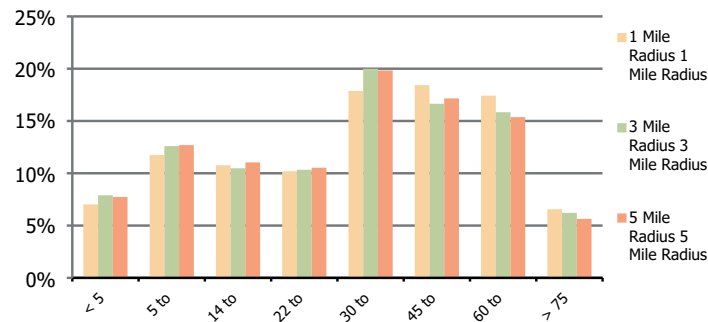
Carmel Village
Corpus Christi, TX

1 Mile Radius

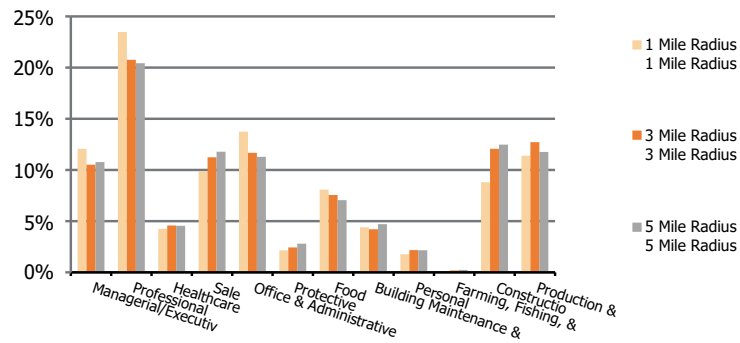
3 Mile Radius

5 Mile Radius

Population by Age Range



Occupation



Population	Current Estimated Population	14,905	116,491	234,050
	2010 Census Population	14,771	113,805	216,301
	2000 Census Population	14,328	111,194	200,721
	Historical Annual Growth 2000 to 2010	0.3%	0.2%	0.8%
	Estimated Annual Growth 2010 to 2020	0.1%	0.2%	0.8%
	Projected Annual Growth 2020 to 2025	0.1%	0.3%	0.9%
Ethnic	Hispanic or Latino Population	57%	65%	65%
	Non Hispanic or Latino Population	43%	35%	35%
Race	White	86.8%	84.7%	83.3%
	Black or African American	2.7%	3.7%	4.3%
	Asian & Pacific Islander	0.9%	1.3%	2.1%
	Other Races	9.6%	10.2%	10.3%