

Christmas Tree Plaza Orange, CT	3 Mile Radius	5 Mile Radius	7 Mile Radius
------------------------------------	---------------	---------------	---------------

Current Year Demographics

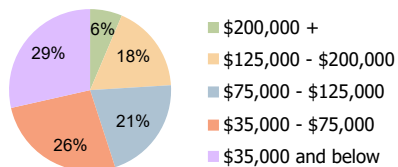
Current Population	65,713	157,484	318,424
Total Daytime Pop	69,008	188,494	408,403
Workplace Pop	30,389	86,395	188,005
Average Household Income	\$93,900	\$91,446	\$87,056
Average Disposable Income	\$72,612	\$69,908	\$67,118
Total Households	25,185	60,981	123,627
Median Home Value	\$291,625	\$305,740	\$288,334
College (4+)	33.0%	35.5%	34.7%
Total Consumer Spending/Capita (Weekly)	\$413	\$406	\$405
Population per Household	2.13	2.01	2.47
% of Households with Children	25.7%	24.7%	25.3%

2025 Demographic Projections

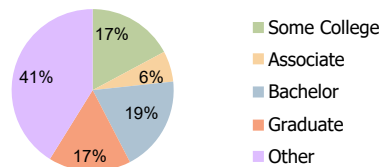
Projected Population	66,606	159,667	323,702
Projected 5 Year Annual Growth Rate (Pop)	0.3%	0.3%	0.3%

Hispanic Ethnicity

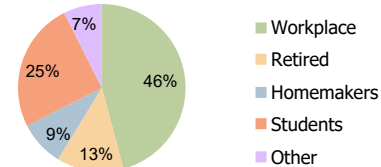
16% Hispanic | 84% Non Hispanic



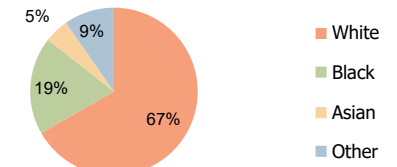
Household Income (3-Mile)



Education (3-Mile)



Daytime Population (3-Mile)



Race (3-Mile)

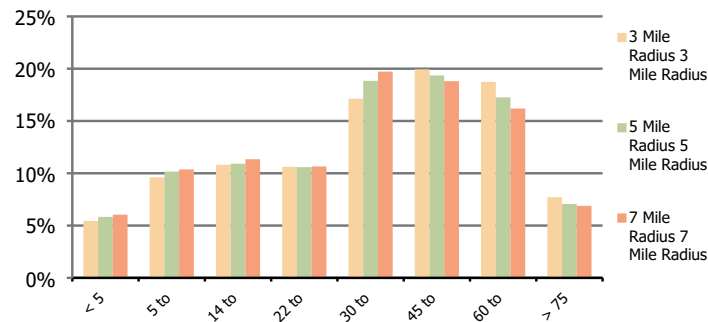
Christmas Tree Plaza
Orange, CT

3 Mile Radius

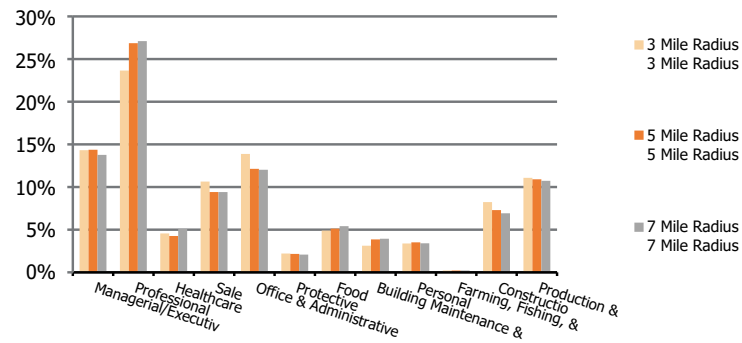
5 Mile Radius

7 Mile Radius

Population by Age Range



Occupation



Population	Current Estimated Population	65,713	157,484	318,424
	2010 Census Population	66,223	157,722	316,420
	2000 Census Population	63,293	153,588	303,592
	Historical Annual Growth 2000 to 2010	0.5%	0.3%	0.4%
	Estimated Annual Growth 2010 to 2020	-0.1%	0.0%	0.1%
	Projected Annual Growth 2020 to 2025	0.3%	0.3%	0.3%
Ethnic	Hispanic or Latino Population	14%	16%	18%
	Non Hispanic or Latino Population	86%	84%	82%
Race	White	74.4%	66.7%	64.9%
	Black or African American	13.5%	18.8%	19.7%
	Asian & Pacific Islander	4.9%	4.7%	4.7%
	Other Races	7.2%	9.7%	10.6%