

Coconut Creek Plaza Coconut Creek, FL	1 Mile Radius	3 Mile Radius	5 Mile Radius
--	---------------	---------------	---------------

### Current Year Demographics

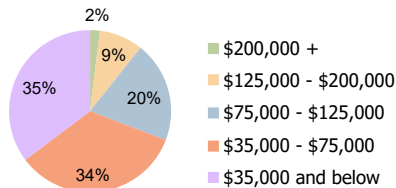
Current Population	14,700	143,366	394,440
Total Daytime Pop	23,884	153,699	443,740
Workplace Pop	10,721	67,018	207,601
Average Household Income	\$58,368	\$64,138	\$69,814
Average Disposable Income	\$51,479	\$55,696	\$59,333
Total Households	7,577	57,742	152,814
Median Home Value	\$229,748	\$321,412	\$351,408
College (4+)	28.4%	24.7%	25.7%
Total Consumer Spending/Capita (Weekly)	\$380	\$381	\$385
Population per Household	2.13	2.01	2.47
% of Households with Children	14.6%	22.0%	27.1%

### 2025 Demographic Projections

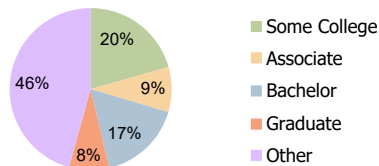
Projected Population	14,564	145,855	400,837
Projected 5 Year Annual Growth Rate (Pop)	-0.2%	0.3%	0.3%

### Hispanic Ethnicity

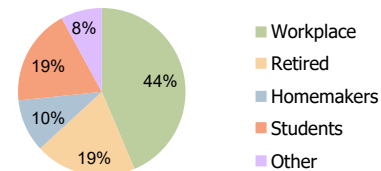
21% Hispanic | 79% Non Hispanic



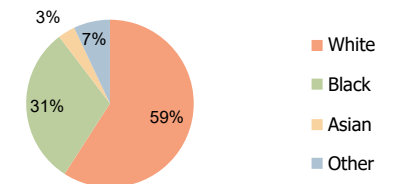
Household Income (3-Mile)



Education (3-Mile)



Daytime Population (3-Mile)



Race (3-Mile)

### Coconut Creek Plaza

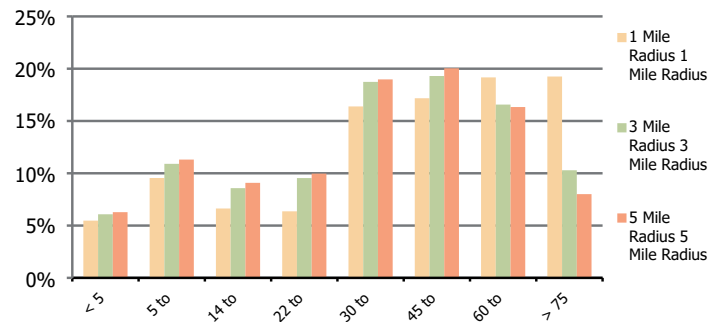
Coconut Creek, FL

### 1 Mile Radius

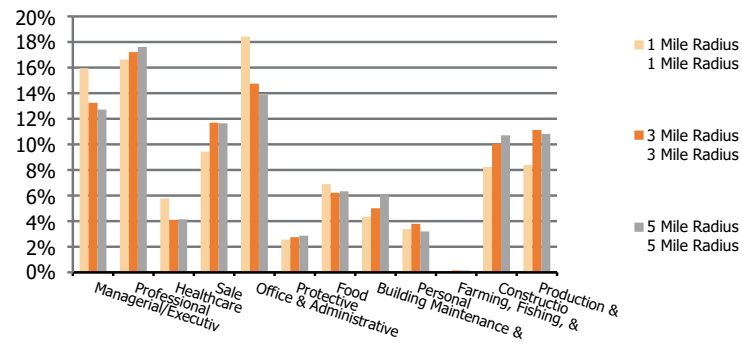
### 3 Mile Radius

### 5 Mile Radius

#### Population by Age Range



#### Occupation



	1 Mile Radius	3 Mile Radius	5 Mile Radius
<b>Population</b>			
Current Estimated Population	14,700	143,366	394,440
2010 Census Population	14,446	128,770	357,741
2000 Census Population	14,122	121,631	344,676
Historical Annual Growth 2000 to 2010	0.2%	0.6%	0.4%
Estimated Annual Growth 2010 to 2020	0.2%	1.1%	1.0%
Projected Annual Growth 2020 to 2025	-0.2%	0.3%	0.3%
<b>Ethnic</b>			
Hispanic or Latino Population	19%	21%	23%
Non Hispanic or Latino Population	81%	79%	77%
<b>Race</b>			
White	77.1%	59.1%	58.5%
Black or African American	14.9%	30.5%	30.6%
Asian & Pacific Islander	2.7%	3.3%	3.1%
Other Races	5.3%	7.0%	7.7%