



Demographic Summary Report

2000, 2010 Census, 2020 Estimates & 2025 Projections
 Calculated using TAS Retrieval

Dalewood I II & III Shopping Center Hartsdale, NY	3 Mile Radius	5 Mile Radius	7 Mile Radius
--	---------------	---------------	---------------

Current Year Demographics

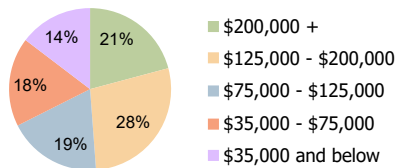
Current Population	117,204	218,240	420,320
Total Daytime Pop	169,413	330,420	551,687
Workplace Pop	90,596	169,251	272,963
Average Household Income	\$159,349	\$185,062	\$178,759
Average Disposable Income	\$99,329	\$107,502	\$105,270
Total Households	45,221	79,929	155,284
Median Home Value	\$648,608	\$717,635	\$704,782
College (4+)	53.8%	59.0%	56.6%
Total Consumer Spending/Capita (Weekly)	\$517	\$531	\$529
Population per Household	2.13	2.01	2.47
% of Households with Children	27.2%	30.2%	30.5%

2025 Demographic Projections

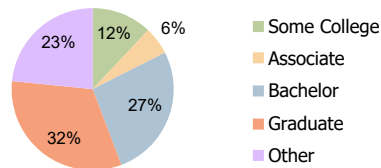
Projected Population	118,756	220,460	423,611
Projected 5 Year Annual Growth Rate (Pop)	0.3%	0.2%	0.2%

Hispanic Ethnicity

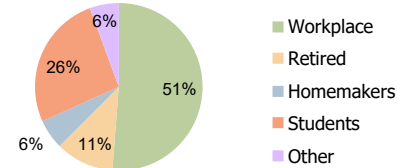
17% Hispanic | 83% Non Hispanic



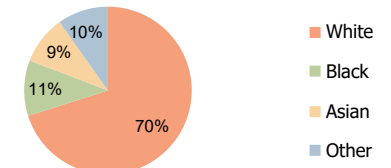
Household Income (3-Mile)



Education (3-Mile)



Daytime Population (3-Mile)



Race (3-Mile)

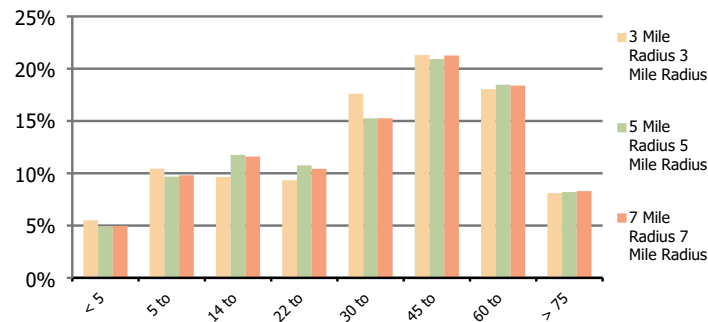
Dalewood I II & III Shopping Center
Hartsdale, NY

3 Mile Radius

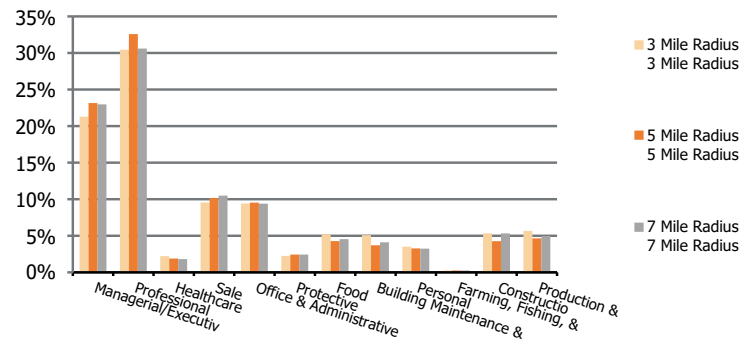
5 Mile Radius

7 Mile Radius

Population by Age Range



Occupation



Population	Current Estimated Population	117,204	218,240	420,320
	2010 Census Population	114,266	212,235	409,304
	2000 Census Population	109,198	203,292	397,004
	Historical Annual Growth 2000 to 2010	0.5%	0.4%	0.3%
	Estimated Annual Growth 2010 to 2020	0.2%	0.3%	0.3%
	Projected Annual Growth 2020 to 2025	0.3%	0.2%	0.2%
Ethnic	Hispanic or Latino Population	24%	17%	19%
	Non Hispanic or Latino Population	76%	83%	81%
Race	White	62.8%	70.1%	73.7%
	Black or African American	14.9%	10.7%	8.0%
	Asian & Pacific Islander	8.9%	9.4%	7.5%
	Other Races	13.4%	9.8%	10.8%