

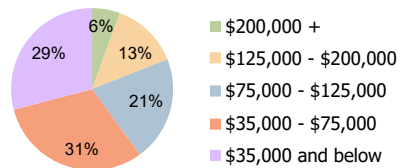
Downtown Publix Stuart, FL	1 Mile Radius	3 Mile Radius	5 Mile Radius
-------------------------------	---------------	---------------	---------------

### Current Year Demographics

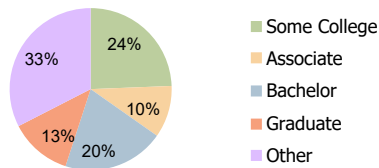
Current Population	5,010	48,227	97,872
Total Daytime Pop	13,066	64,343	116,392
Workplace Pop	9,222	30,686	51,670
Average Household Income	\$73,783	\$87,592	\$92,609
Average Disposable Income	\$61,315	\$68,401	\$70,808
Total Households	2,372	22,355	43,660
Median Home Value	\$366,149	\$447,487	\$482,554
College (4+)	27.3%	32.7%	33.6%
Total Consumer Spending/Capita (Weekly)	\$383	\$393	\$396
Population per Household	2.13	2.01	2.47
% of Households with Children	16.2%	18.1%	19.0%

### 2025 Demographic Projections

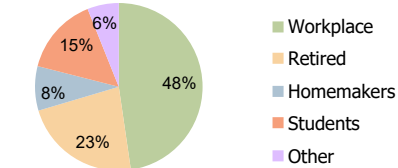
Projected Population	5,241	51,236	103,797
Projected 5 Year Annual Growth Rate (Pop)	0.9%	1.2%	1.2%



Household Income (3-Mile)



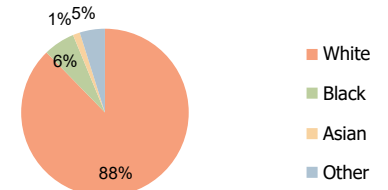
Education (3-Mile)



Daytime Population (3-Mile)

### Hispanic Ethnicity

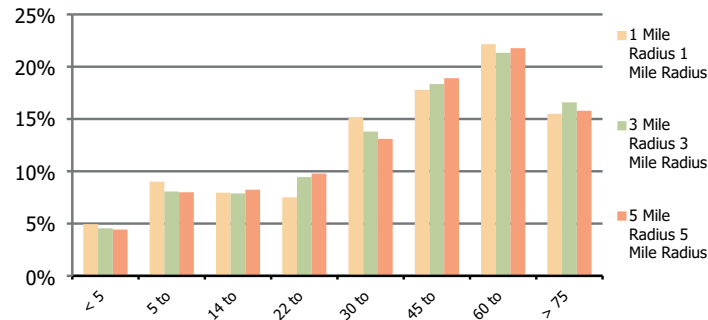
11% Hispanic | 89% Non Hispanic



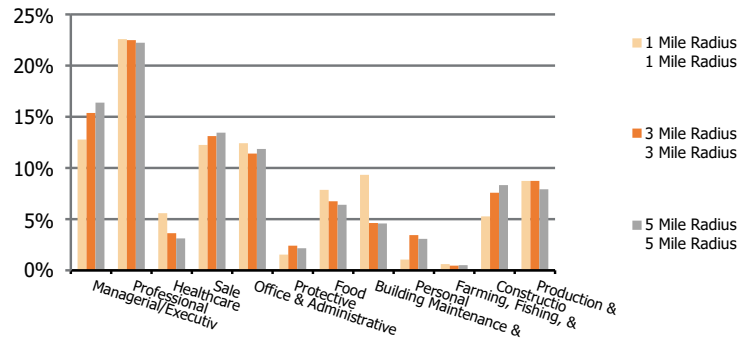
Race (3-Mile)

<b>Downtown Publix</b> Stuart, FL	<b>1 Mile Radius</b>	<b>3 Mile Radius</b>	<b>5 Mile Radius</b>
--------------------------------------	----------------------	----------------------	----------------------

**Population by Age Range**



**Occupation**



	1 Mile Radius	3 Mile Radius	5 Mile Radius
<b>Population</b>			
Current Estimated Population	5,010	48,227	97,872
2010 Census Population	4,689	43,339	88,554
2000 Census Population	4,547	39,239	76,311
Historical Annual Growth 2000 to 2010	0.3%	1.0%	1.5%
Estimated Annual Growth 2010 to 2020	0.6%	1.0%	1.0%
Projected Annual Growth 2020 to 2025	0.9%	1.2%	1.2%
<b>Ethnic</b>			
Hispanic or Latino Population	14%	11%	11%
Non Hispanic or Latino Population	86%	89%	89%
<b>Race</b>			
White	74.2%	87.7%	89.0%
Black or African American	17.2%	6.1%	4.6%
Asian & Pacific Islander	0.7%	1.4%	1.4%
Other Races	7.9%	4.9%	5.1%