



Demographic Summary Report

2000, 2010 Census, 2020 Estimates & 2025 Projections
 Calculated using TAS Retrieval

Elk Grove Town Center Elk Grove Village, IL	1 Mile Radius	3 Mile Radius	5 Mile Radius
--	---------------	---------------	---------------

Current Year Demographics

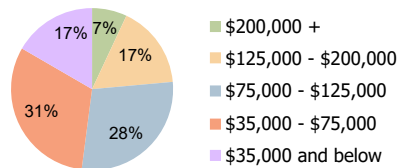
Current Population	11,636	55,378	216,623
Total Daytime Pop	19,345	155,096	470,005
Workplace Pop	10,433	126,083	349,699
Average Household Income	\$89,972	\$97,938	\$93,423
Average Disposable Income	\$70,913	\$77,341	\$74,332
Total Households	5,051	22,115	83,229
Median Home Value	\$325,053	\$344,511	\$338,907
College (4+)	33.9%	34.9%	35.7%
Total Consumer Spending/Capita (Weekly)	\$413	\$415	\$409
Population per Household	2.13	2.01	2.47
% of Households with Children	23.9%	25.4%	28.4%

2025 Demographic Projections

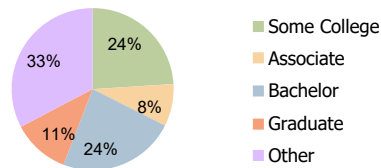
Projected Population	11,406	54,662	214,469
Projected 5 Year Annual Growth Rate (Pop)	-0.4%	-0.3%	-0.2%

Hispanic Ethnicity

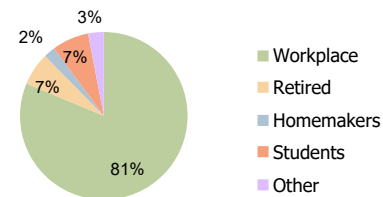
13% Hispanic | 87% Non Hispanic



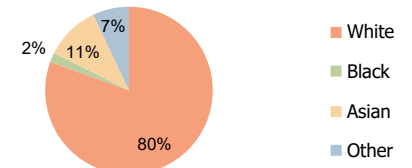
Household Income (3-Mile)



Education (3-Mile)



Daytime Population (3-Mile)



Race (3-Mile)

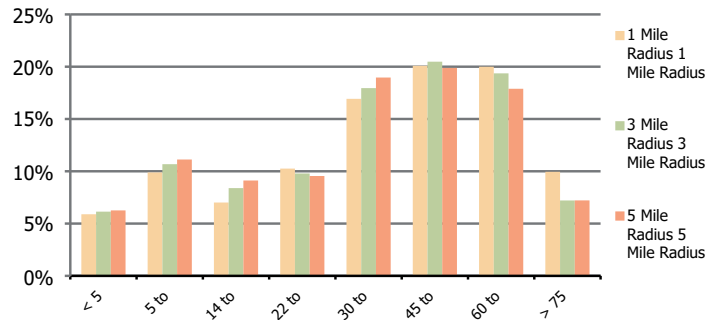
Elk Grove Town Center
Elk Grove Village, IL

1 Mile Radius

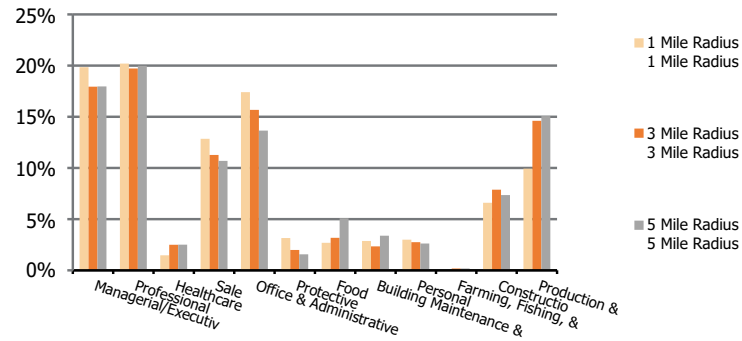
3 Mile Radius

5 Mile Radius

Population by Age Range



Occupation



Population	Current Estimated Population	11,636	55,378	216,623
	2010 Census Population	11,363	57,917	222,343
	2000 Census Population	11,880	58,897	227,278
	Historical Annual Growth 2000 to 2010	-0.4%	-0.2%	-0.2%
	Estimated Annual Growth 2010 to 2020	0.2%	-0.4%	-0.3%
	Projected Annual Growth 2020 to 2025	-0.4%	-0.3%	-0.2%
Ethnic	Hispanic or Latino Population	9%	13%	19%
	Non Hispanic or Latino Population	91%	87%	81%
Race	White	87.3%	80.6%	76.4%
	Black or African American	1.1%	1.8%	2.7%
	Asian & Pacific Islander	6.7%	10.6%	11.2%
	Other Races	4.9%	7.0%	9.6%