

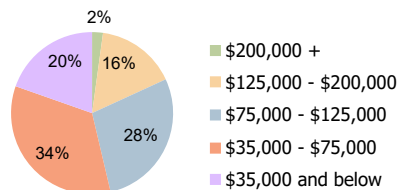
Fairview Corners I & II Simpsonville, SC	1 Mile Radius	3 Mile Radius	5 Mile Radius
---	---------------	---------------	---------------

### Current Year Demographics

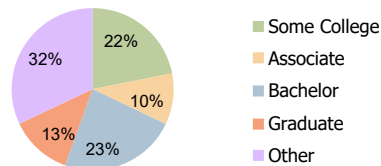
Current Population	6,048	42,062	76,758
Total Daytime Pop	5,203	32,657	59,990
Workplace Pop	2,371	11,684	20,689
Average Household Income	\$79,140	\$85,025	\$83,687
Average Disposable Income	\$67,190	\$69,030	\$68,606
Total Households	2,217	15,597	28,464
Median Home Value	\$221,526	\$228,922	\$221,605
College (4+)	33.9%	35.9%	33.3%
Total Consumer Spending/Capita (Weekly)	\$352	\$357	\$356
Population per Household	2.13	2.01	2.47
% of Households with Children	38.0%	35.2%	34.2%

### 2025 Demographic Projections

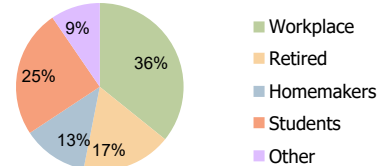
Projected Population	6,763	46,811	84,256
Projected 5 Year Annual Growth Rate (Pop)	2.3%	2.2%	1.9%



Household Income (3-Mile)



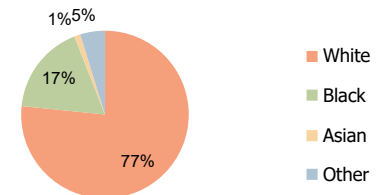
Education (3-Mile)



Daytime Population (3-Mile)

### Hispanic Ethnicity

7% Hispanic | 93% Non Hispanic



Race (3-Mile)

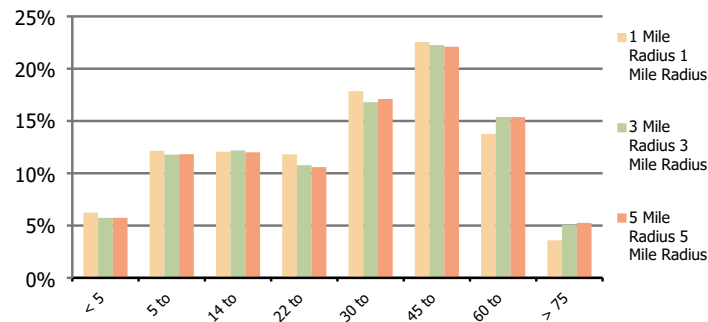
**Fairview Corners I & II**  
 Simpsonville, SC

**1 Mile Radius**

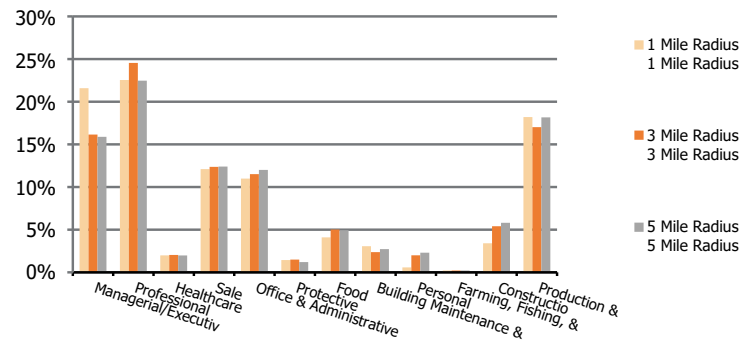
**3 Mile Radius**

**5 Mile Radius**

**Population by Age Range**



**Occupation**



<b>Population</b>	Current Estimated Population	6,048	42,062	76,758
	2010 Census Population	4,541	31,476	58,869
	2000 Census Population	2,824	22,839	42,659
	Historical Annual Growth 2000 to 2010	4.9%	3.3%	3.3%
	Estimated Annual Growth 2010 to 2020	2.8%	2.9%	2.6%
	Projected Annual Growth 2020 to 2025	2.3%	2.2%	1.9%
<b>Ethnic</b>	Hispanic or Latino Population	8%	7%	7%
	Non Hispanic or Latino Population	92%	93%	93%
<b>Race</b>	White	76.0%	76.6%	74.9%
	Black or African American	17.9%	17.5%	19.2%
	Asian & Pacific Islander	1.1%	1.2%	1.2%
	Other Races	5.0%	4.8%	4.7%