

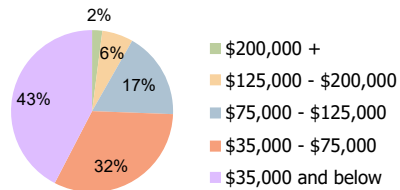
Grand Central Plaza Parkersburg, WV	3 Mile Radius	5 Mile Radius	10 Mile Radius
--	---------------	---------------	----------------

Current Year Demographics

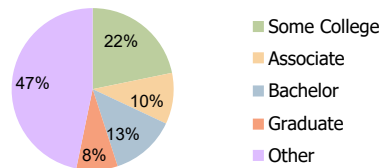
Current Population	38,044	59,036	106,841
Total Daytime Pop	45,124	71,949	128,540
Workplace Pop	20,777	30,689	52,599
Average Household Income	\$59,989	\$60,415	\$64,079
Average Disposable Income	\$48,251	\$48,286	\$52,175
Total Households	16,933	25,784	44,873
Median Home Value	\$122,532	\$120,600	\$136,472
College (4+)	23.0%	21.3%	21.6%
Total Consumer Spending/Capita (Weekly)	\$343	\$343	\$348
Population per Household	2.13	2.01	2.47
% of Households with Children	22.5%	24.1%	24.6%

2025 Demographic Projections

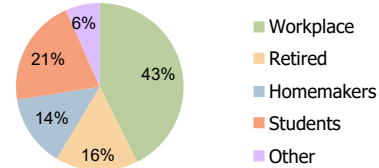
Projected Population	37,703	58,365	105,600
Projected 5 Year Annual Growth Rate (Pop)	-0.2%	-0.2%	-0.2%



Household Income (3-Mile)



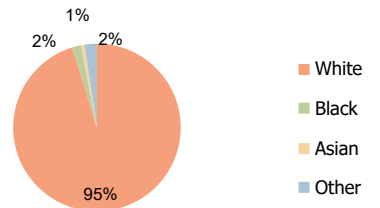
Education (3-Mile)



Daytime Population (3-Mile)

Hispanic Ethnicity

1% Hispanic | 99% Non Hispanic



Race (3-Mile)

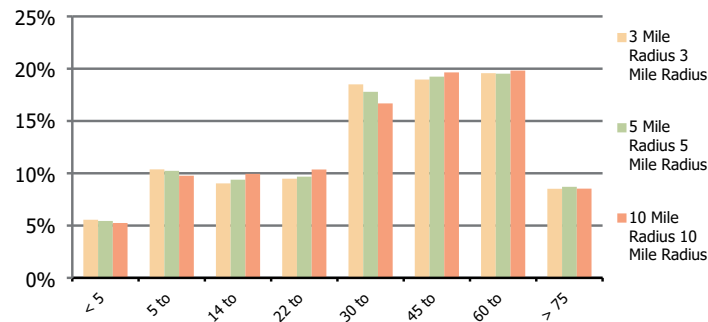
Grand Central Plaza
Parkersburg, WV

3 Mile Radius

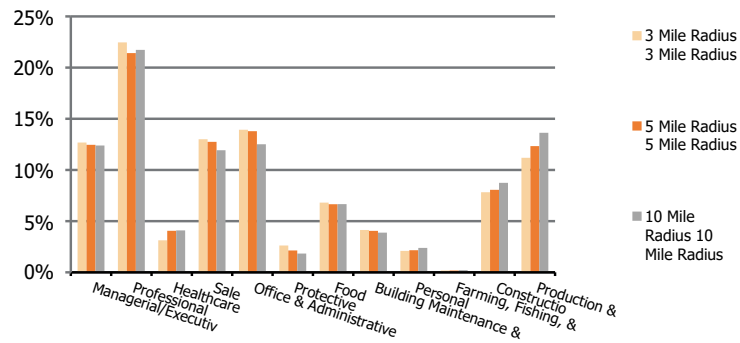
5 Mile Radius

10 Mile Radius

Population by Age Range



Occupation



Population	Current Estimated Population	38,044	59,036	106,841
	2010 Census Population	39,409	61,173	109,506
	2000 Census Population	41,082	63,582	111,392
	Historical Annual Growth 2000 to 2010	-0.4%	-0.4%	-0.2%
	Estimated Annual Growth 2010 to 2020	-0.3%	-0.3%	-0.2%
	Projected Annual Growth 2020 to 2025	-0.2%	-0.2%	-0.2%
Ethnic	Hispanic or Latino Population	1%	1%	1%
	Non Hispanic or Latino Population	99%	99%	99%
Race	White	94.3%	95.3%	96.0%
	Black or African American	2.2%	1.7%	1.3%
	Asian & Pacific Islander	0.8%	0.7%	0.6%
	Other Races	2.7%	2.4%	2.0%