

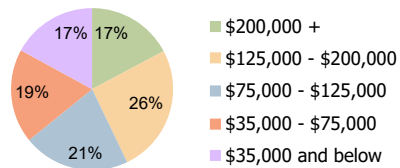
| Middletown Plaza<br>Middletown, NJ | 1 Mile Radius | 3 Mile Radius | 5 Mile Radius |
|------------------------------------|---------------|---------------|---------------|
|------------------------------------|---------------|---------------|---------------|

### Current Year Demographics

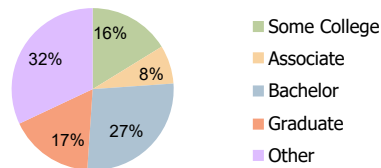
|   |           |           |           |
|---|-----------|-----------|-----------|
| Current Population                      | 6,031     | 60,164    | 134,015   |
| Total Daytime Pop                       | 8,627     | 60,184    | 155,461   |
| Workplace Pop                           | 5,180     | 26,678    | 66,521    |
| Average Household Income                | \$134,540 | \$138,712 | \$131,231 |
| Average Disposable Income               | \$102,449 | \$99,976  | \$95,539  |
| Total Households                        | 2,150     | 21,259    | 48,438    |
| Median Home Value                       | \$560,850 | \$463,348 | \$445,233 |
| College (4+)                            | 46.7%     | 44.1%     | 42.0%     |
| Total Consumer Spending/Capita (Weekly) | \$503     | \$503     | \$496     |
| Population per Household                | 2.13      | 2.01      | 2.47      |
| % of Households with Children           | 31.5%     | 32.9%     | 30.0%     |

### 2025 Demographic Projections

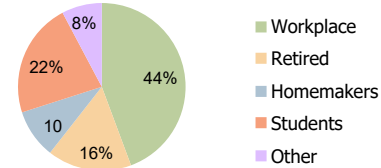
|   |       |        |         |
|---|-------|--------|---------|
| Projected Population                      | 6,129 | 60,822 | 135,530 |
| Projected 5 Year Annual Growth Rate (Pop) | 0.3%  | 0.2%   | 0.2%    |



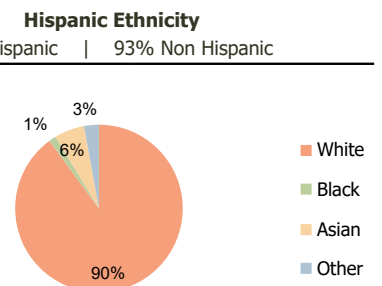
Household Income (3-Mile)



Education (3-Mile)



Daytime Population (3-Mile)



Race (3-Mile)

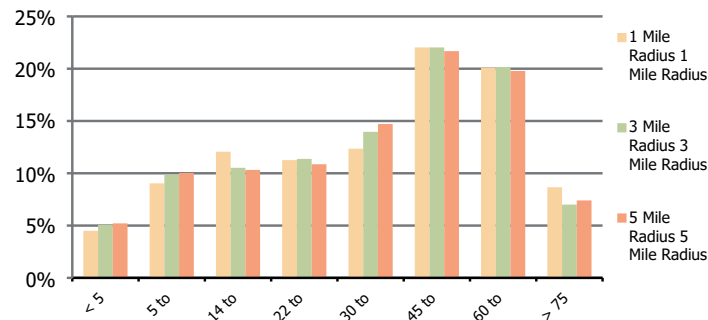
**Middletown Plaza**  
Middletown, NJ

**1 Mile Radius**

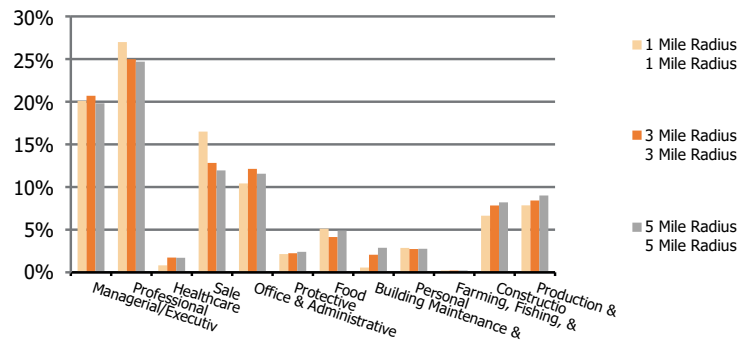
**3 Mile Radius**

**5 Mile Radius**

**Population by Age Range**



**Occupation**



|                                       | 1 Mile Radius | 3 Mile Radius | 5 Mile Radius |
|---------------------------------------|---------------|---------------|---------------|
| <b>Population</b>                     |               |               |               |
| Current Estimated Population          | 6,031         | 60,164        | 134,015       |
| 2010 Census Population                | 5,931         | 61,841        | 137,555       |
| 2000 Census Population                | 6,133         | 61,441        | 138,860       |
| Historical Annual Growth 2000 to 2010 | -0.3%         | 0.1%          | -0.1%         |
| Estimated Annual Growth 2010 to 2020  | 0.2%          | -0.3%         | -0.3%         |
| Projected Annual Growth 2020 to 2025  | 0.3%          | 0.2%          | 0.2%          |
| <b>Ethnic</b>                         |               |               |               |
| Hispanic or Latino Population         | 6%            | 7%            | 10%           |
| Non Hispanic or Latino Population     | 94%           | 93%           | 90%           |
| <b>Race</b>                           |               |               |               |
| White                                 | 94.5%         | 89.9%         | 87.5%         |
| Black or African American             | 0.9%          | 1.4%          | 2.9%          |
| Asian & Pacific Islander              | 3.0%          | 5.8%          | 4.7%          |
| Other Races                           | 1.7%          | 2.9%          | 4.8%          |