

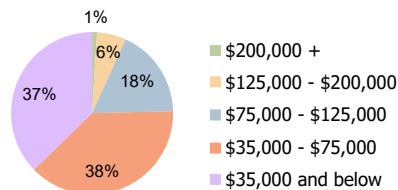
Normandy Square Jacksonville, FL	1 Mile Radius	3 Mile Radius	5 Mile Radius
-------------------------------------	---------------	---------------	---------------

Current Year Demographics

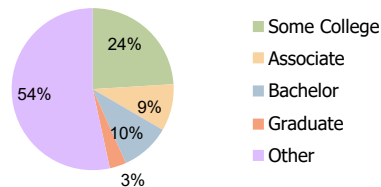
Current Population	7,434	63,057	153,580
Total Daytime Pop	9,113	52,767	135,897
Workplace Pop	4,059	20,434	54,555
Average Household Income	\$62,181	\$56,361	\$63,632
Average Disposable Income	\$55,312	\$49,319	\$53,255
Total Households	2,779	23,516	59,381
Median Home Value	\$183,949	\$178,567	\$199,369
College (4+)	14.2%	13.2%	18.7%
Total Consumer Spending/Capita (Weekly)	\$340	\$330	\$334
Population per Household	2.13	2.01	2.47
% of Households with Children	29.8%	32.6%	29.7%

2025 Demographic Projections

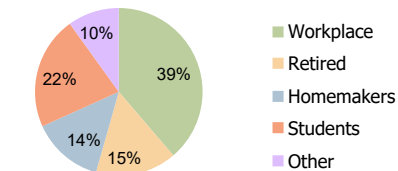
Projected Population	7,542	63,618	156,066
Projected 5 Year Annual Growth Rate (Pop)	0.3%	0.2%	0.3%



Household Income (3-Mile)



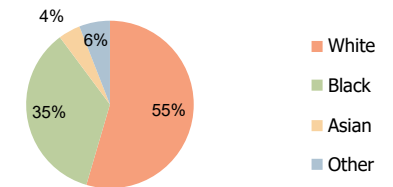
Education (3-Mile)



Daytime Population (3-Mile)

Hispanic Ethnicity

7% Hispanic | 93% Non Hispanic



Race (3-Mile)

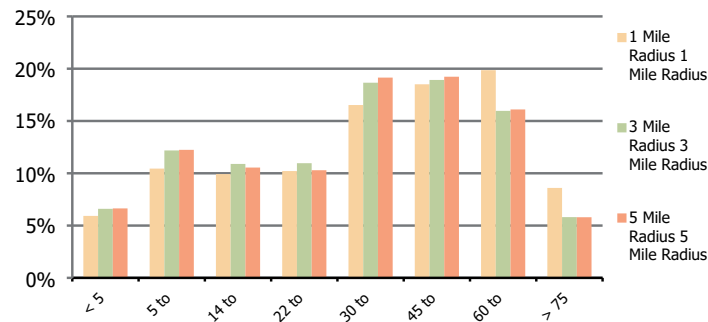
Normandy Square
Jacksonville, FL

1 Mile Radius

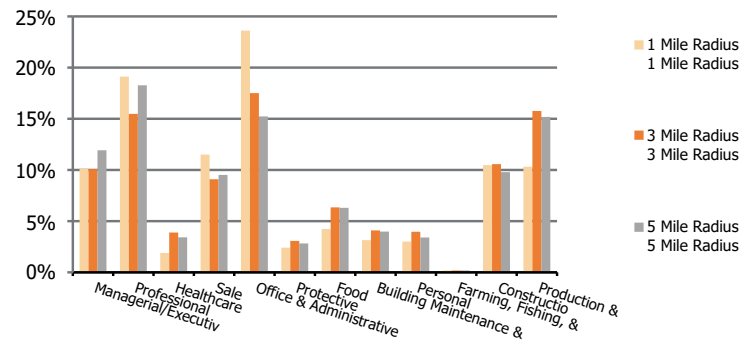
3 Mile Radius

5 Mile Radius

Population by Age Range



Occupation



Population	Current Estimated Population	7,434	63,057	153,580
	2010 Census Population	7,134	60,934	145,076
	2000 Census Population	7,148	57,502	135,014
	Historical Annual Growth 2000 to 2010	0.0%	0.6%	0.7%
	Estimated Annual Growth 2010 to 2020	0.4%	0.3%	0.6%
	Projected Annual Growth 2020 to 2025	0.3%	0.2%	0.3%
Ethnic	Hispanic or Latino Population	6%	7%	8%
	Non Hispanic or Latino Population	94%	93%	92%
Race	White	67.4%	54.5%	58.0%
	Black or African American	23.1%	35.3%	32.5%
	Asian & Pacific Islander	5.0%	4.3%	3.5%
	Other Races	4.5%	5.9%	6.0%