

Northtown Plaza Houston, TX	1 Mile Radius	3 Mile Radius	5 Mile Radius
--------------------------------	---------------	---------------	---------------

### Current Year Demographics

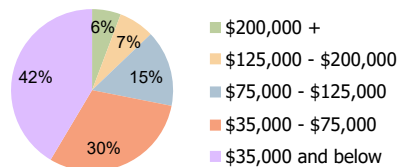
Current Population	22,065	134,465	356,563
Total Daytime Pop	19,245	126,391	340,480
Workplace Pop	6,841	43,537	135,196
Average Household Income	\$41,627	\$70,028	\$81,952
Average Disposable Income	\$36,889	\$56,238	\$65,090
Total Households	6,795	42,879	122,110
Median Home Value	\$117,505	\$140,186	\$166,921
College (4+)	4.8%	16.1%	22.6%
Total Consumer Spending/Capita (Weekly)	\$320	\$336	\$344
Population per Household	2.13	2.01	2.47
% of Households with Children	35.3%	35.6%	31.4%

### 2025 Demographic Projections

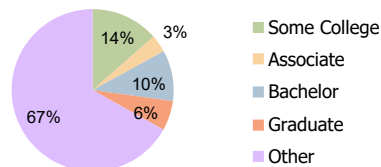
Projected Population	22,312	136,771	366,050
Projected 5 Year Annual Growth Rate (Pop)	0.2%	0.3%	0.5%

### Hispanic Ethnicity

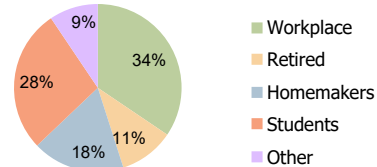
67% Hispanic | 33% Non Hispanic



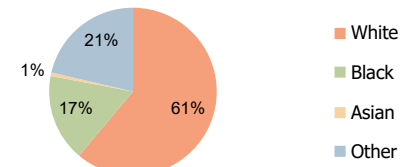
Household Income (3-Mile)



Education (3-Mile)



Daytime Population (3-Mile)



Race (3-Mile)

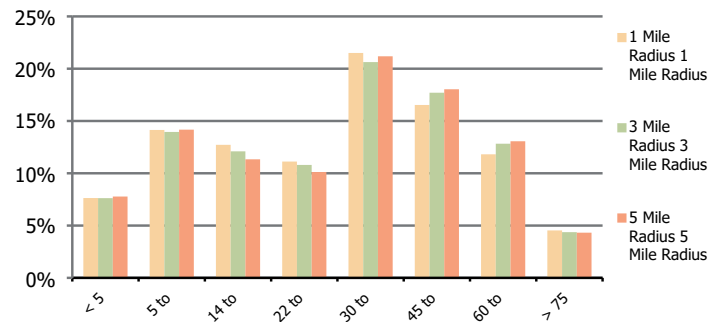
**Northtown Plaza**  
 Houston, TX

**1 Mile Radius**

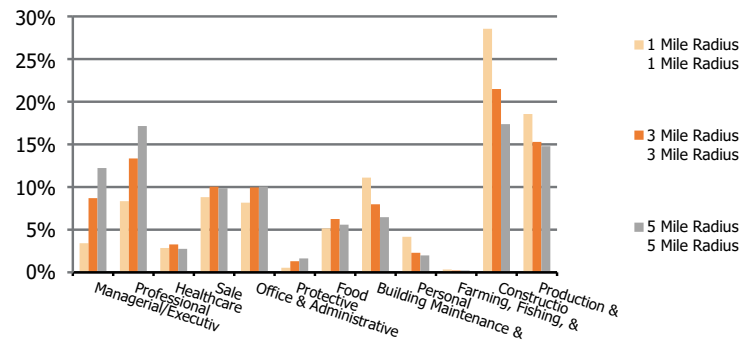
**3 Mile Radius**

**5 Mile Radius**

**Population by Age Range**



**Occupation**



<b>Population</b>	Current Estimated Population	22,065	134,465	356,563
	2010 Census Population	20,700	125,360	330,802
	2000 Census Population	20,172	122,592	330,331
	Historical Annual Growth 2000 to 2010	0.3%	0.2%	0.0%
	Estimated Annual Growth 2010 to 2020	0.6%	0.7%	0.7%
	Projected Annual Growth 2020 to 2025	0.2%	0.3%	0.5%
<b>Ethnic</b>	Hispanic or Latino Population	78%	67%	59%
	Non Hispanic or Latino Population	22%	33%	41%
<b>Race</b>	White	61.6%	61.1%	59.6%
	Black or African American	13.4%	16.8%	18.8%
	Asian & Pacific Islander	0.3%	0.7%	1.5%
	Other Races	24.7%	21.3%	20.2%