

Ocean View Plaza San Clemente, CA	1 Mile Radius	3 Mile Radius	5 Mile Radius
--------------------------------------	---------------	---------------	---------------

Current Year Demographics

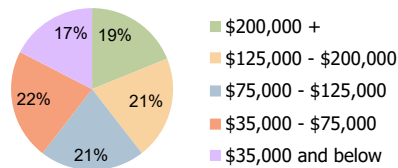
Current Population	12,416	69,818	147,011
Total Daytime Pop	9,573	79,669	145,007
Workplace Pop	4,007	33,319	57,302
Average Household Income	\$134,729	\$136,264	\$150,225
Average Disposable Income	\$101,113	\$98,865	\$103,836
Total Households	5,012	26,710	56,058
Median Home Value	\$948,780	\$979,912	\$1,046,275
College (4+)	45.2%	43.7%	48.5%
Total Consumer Spending/Capita (Weekly)	\$449	\$442	\$445
Population per Household	2.13	2.01	2.47
% of Households with Children	17.1%	25.4%	27.0%

2025 Demographic Projections

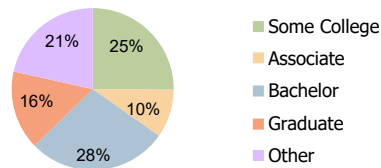
Projected Population	12,337	69,532	146,480
Projected 5 Year Annual Growth Rate (Pop)	-0.1%	-0.1%	-0.1%

Hispanic Ethnicity

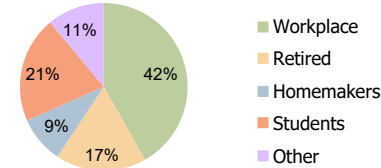
22% Hispanic | 78% Non Hispanic



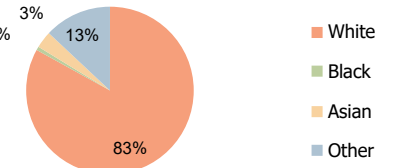
Household Income (3-Mile)



Education (3-Mile)



Daytime Population (3-Mile)



Race (3-Mile)

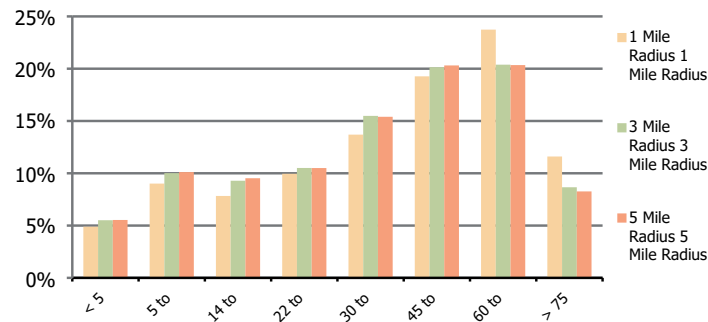
Ocean View Plaza
San Clemente, CA

1 Mile Radius

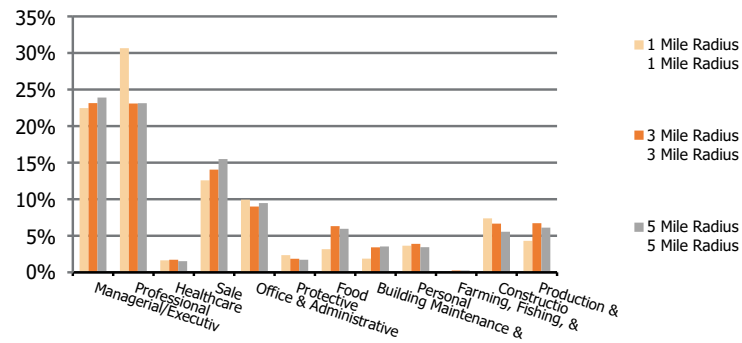
3 Mile Radius

5 Mile Radius

Population by Age Range



Occupation



Population	Current Estimated Population	12,416	69,818	147,011
	2010 Census Population	11,810	68,002	142,624
	2000 Census Population	11,922	64,667	130,775
	Historical Annual Growth 2000 to 2010	-0.1%	0.5%	0.9%
	Estimated Annual Growth 2010 to 2020	0.5%	0.3%	0.3%
	Projected Annual Growth 2020 to 2025	-0.1%	-0.1%	-0.1%
Ethnic	Hispanic or Latino Population	16%	22%	20%
	Non Hispanic or Latino Population	84%	78%	80%
Race	White	84.7%	83.0%	82.7%
	Black or African American	0.8%	0.7%	0.8%
	Asian & Pacific Islander	3.3%	3.3%	3.9%
	Other Races	11.2%	13.0%	12.6%