

Plaza by the Sea San Clemente, CA	1 Mile Radius	3 Mile Radius	5 Mile Radius
--------------------------------------	---------------	---------------	---------------

### Current Year Demographics

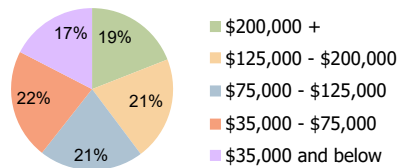
Current Population	12,736	70,603	149,796
Total Daytime Pop	10,029	80,354	146,045
Workplace Pop	4,090	32,797	57,504
Average Household Income	\$138,120	\$136,984	\$150,321
Average Disposable Income	\$102,678	\$99,229	\$103,835
Total Households	5,110	26,925	57,086
Median Home Value	\$962,040	\$975,021	\$1,041,903
College (4+)	44.5%	43.9%	48.5%
Total Consumer Spending/Capita (Weekly)	\$450	\$442	\$445
Population per Household	2.13	2.01	2.47
% of Households with Children	17.7%	25.7%	27.1%

### 2025 Demographic Projections

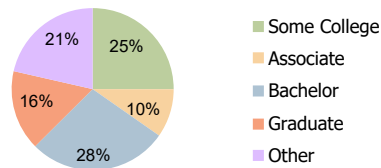
Projected Population	12,682	70,339	149,345
Projected 5 Year Annual Growth Rate (Pop)	-0.1%	-0.1%	-0.1%

### Hispanic Ethnicity

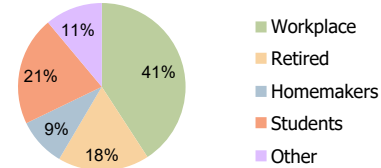
22% Hispanic | 78% Non Hispanic



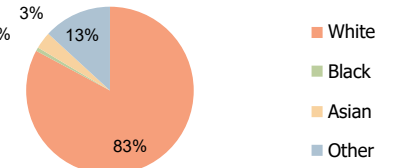
Household Income (3-Mile)



Education (3-Mile)



Daytime Population (3-Mile)



Race (3-Mile)

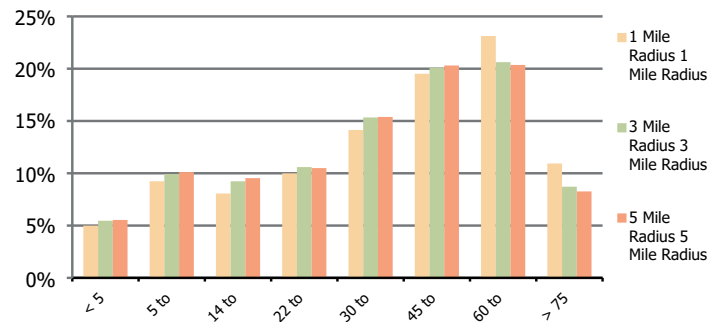
**Plaza by the Sea**  
San Clemente, CA

**1 Mile Radius**

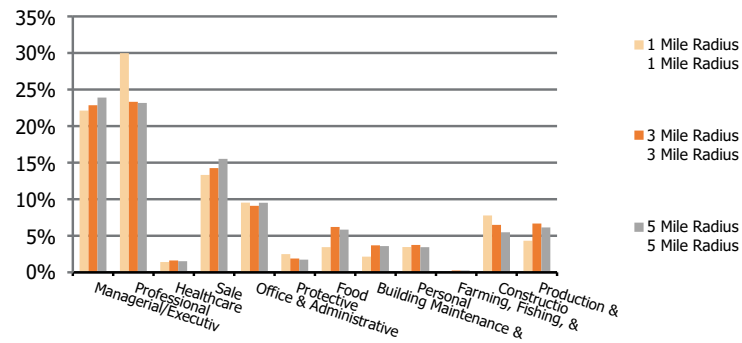
**3 Mile Radius**

**5 Mile Radius**

**Population by Age Range**



**Occupation**



<b>Population</b>	Current Estimated Population	12,736	70,603	149,796
	2010 Census Population	12,039	68,646	145,305
	2000 Census Population	12,183	65,691	133,457
	Historical Annual Growth 2000 to 2010	-0.1%	0.4%	0.9%
	Estimated Annual Growth 2010 to 2020	0.6%	0.3%	0.3%
	Projected Annual Growth 2020 to 2025	-0.1%	-0.1%	-0.1%
<b>Ethnic</b>	Hispanic or Latino Population	17%	22%	21%
	Non Hispanic or Latino Population	83%	78%	79%
<b>Race</b>	White	84.1%	82.8%	82.5%
	Black or African American	0.8%	0.7%	0.8%
	Asian & Pacific Islander	3.3%	3.3%	4.0%
	Other Races	11.7%	13.2%	12.8%