

Pointe Orlando Orlando, FL	1 Mile Radius	3 Mile Radius	5 Mile Radius
-------------------------------	---------------	---------------	---------------

Current Year Demographics

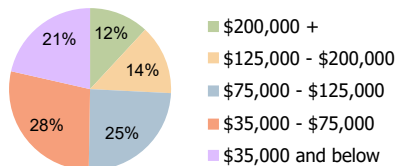
Current Population	2,060	44,670	158,933
Total Daytime Pop	13,441	129,611	336,273
Workplace Pop	11,742	105,079	220,487
Average Household Income	\$153,411	\$112,749	\$88,208
Average Disposable Income	\$108,528	\$83,963	\$67,977
Total Households	722	17,804	58,394
Median Home Value	\$788,159	\$493,195	\$415,975
College (4+)	57.0%	46.5%	38.4%
Total Consumer Spending/Capita (Weekly)	\$400	\$379	\$357
Population per Household	2.13	2.01	2.47
% of Households with Children	28.2%	24.5%	29.1%

2025 Demographic Projections

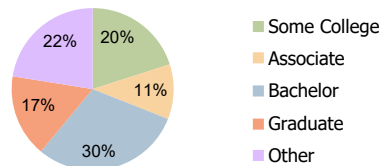
Projected Population	2,395	51,619	174,426
Projected 5 Year Annual Growth Rate (Pop)	3.1%	2.9%	1.9%

Hispanic Ethnicity

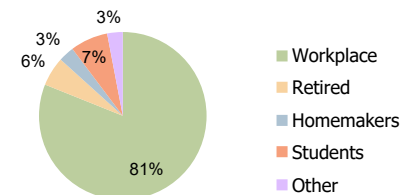
17% Hispanic | 83% Non Hispanic



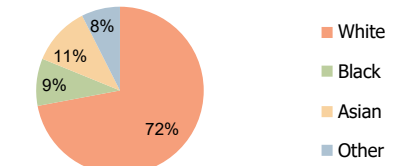
Household Income (3-Mile)



Education (3-Mile)



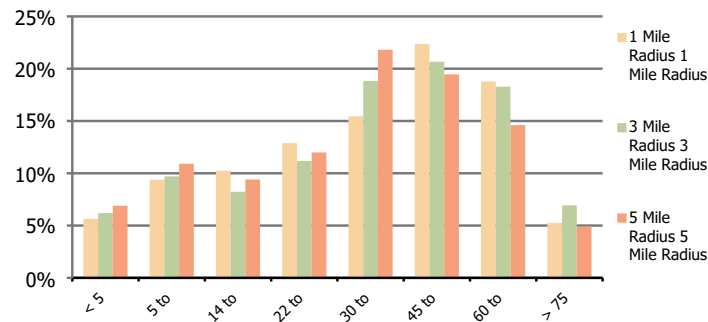
Daytime Population (3-Mile)



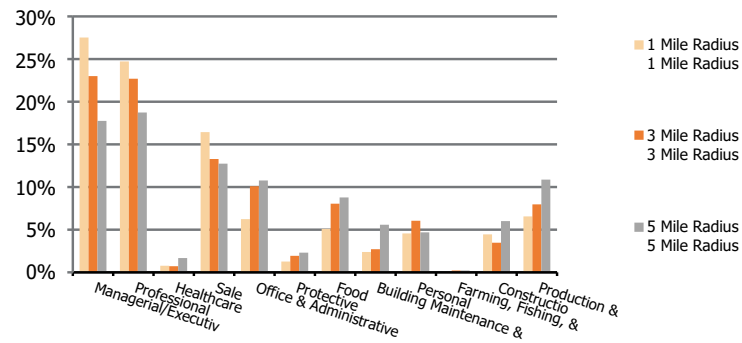
Race (3-Mile)

Pointe Orlando Orlando, FL	1 Mile Radius	3 Mile Radius	5 Mile Radius
--------------------------------------	----------------------	----------------------	----------------------

Population by Age Range



Occupation



Population	Current Estimated Population	2,060	44,670	158,933
	2010 Census Population	1,490	32,032	127,224
	2000 Census Population	1,179	27,923	96,889
	Historical Annual Growth 2000 to 2010	2.4%	1.4%	2.8%
	Estimated Annual Growth 2010 to 2020	3.2%	3.3%	2.2%
	Projected Annual Growth 2020 to 2025	3.1%	2.9%	1.9%
Ethnic	Hispanic or Latino Population	15%	17%	30%
	Non Hispanic or Latino Population	85%	83%	70%
Race	White	66.2%	72.0%	64.1%
	Black or African American	8.3%	9.1%	14.9%
	Asian & Pacific Islander	19.0%	11.4%	9.4%
	Other Races	6.5%	7.5%	11.6%