

Ridge Plaza Arlington Heights, IL	1 Mile Radius	3 Mile Radius	5 Mile Radius
--------------------------------------	---------------	---------------	---------------

Current Year Demographics

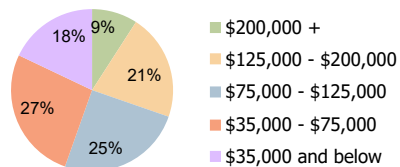
Current Population	13,894	124,167	250,962
Total Daytime Pop	22,868	119,413	315,620
Workplace Pop	15,088	59,582	174,060
Average Household Income	\$103,490	\$109,115	\$118,227
Average Disposable Income	\$75,439	\$83,750	\$88,641
Total Households	5,488	47,857	97,632
Median Home Value	\$343,433	\$359,693	\$384,349
College (4+)	47.0%	50.6%	53.5%
Total Consumer Spending/Capita (Weekly)	\$406	\$420	\$427
Population per Household	2.13	2.01	2.47
% of Households with Children	28.2%	29.6%	29.4%

2025 Demographic Projections

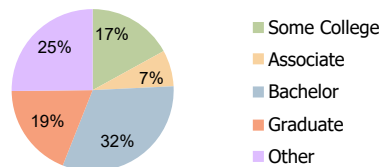
Projected Population	13,623	123,200	249,920
Projected 5 Year Annual Growth Rate (Pop)	-0.4%	-0.2%	-0.1%

Hispanic Ethnicity

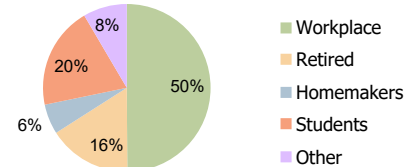
17% Hispanic | 83% Non Hispanic



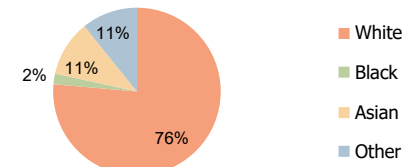
Household Income (3-Mile)



Education (3-Mile)



Daytime Population (3-Mile)



Race (3-Mile)

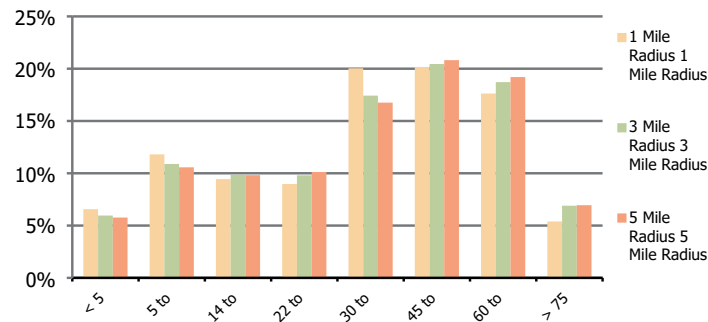
Ridge Plaza
 Arlington Heights, IL

1 Mile Radius

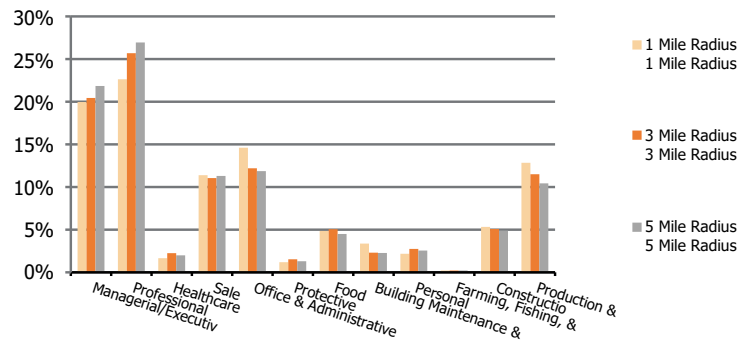
3 Mile Radius

5 Mile Radius

Population by Age Range



Occupation



Population	Current Estimated Population	13,894	124,167	250,962
	2010 Census Population	14,810	128,628	256,198
	2000 Census Population	14,672	132,316	255,266
	Historical Annual Growth 2000 to 2010	0.1%	-0.3%	0.0%
	Estimated Annual Growth 2010 to 2020	-0.6%	-0.3%	-0.2%
	Projected Annual Growth 2020 to 2025	-0.4%	-0.2%	-0.1%
Ethnic	Hispanic or Latino Population	21%	17%	14%
	Non Hispanic or Latino Population	79%	83%	86%
Race	White	74.4%	76.4%	78.4%
	Black or African American	2.3%	2.1%	1.8%
	Asian & Pacific Islander	9.3%	10.8%	11.1%
	Other Races	13.9%	10.8%	8.7%