

Rivercrest Shopping Center Crestwood, IL	1 Mile Radius	3 Mile Radius	5 Mile Radius
---	---------------	---------------	---------------

### Current Year Demographics

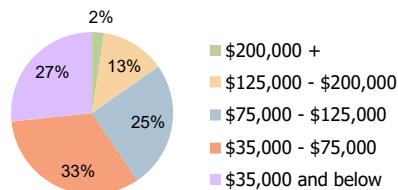
Current Population	7,679	84,969	289,522
Total Daytime Pop	13,897	106,593	319,709
Workplace Pop	8,022	51,705	148,202
Average Household Income	\$65,468	\$75,565	\$79,371
Average Disposable Income	\$55,256	\$61,652	\$64,442
Total Households	3,290	32,338	109,096
Median Home Value	\$181,720	\$220,877	\$235,181
College (4+)	24.1%	24.4%	28.0%
Total Consumer Spending/Capita (Weekly)	\$391	\$396	\$399
Population per Household	2.13	2.01	2.47
% of Households with Children	16.8%	26.1%	27.0%

### 2025 Demographic Projections

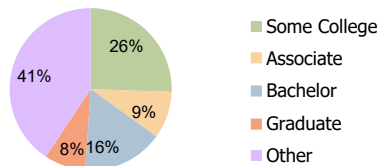
Projected Population	7,457	82,599	281,459
Projected 5 Year Annual Growth Rate (Pop)	-0.6%	-0.6%	-0.6%

### Hispanic Ethnicity

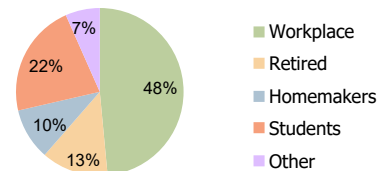
16% Hispanic | 84% Non Hispanic



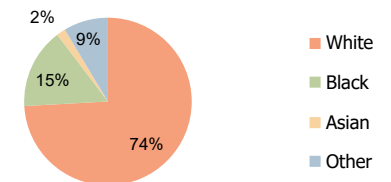
Household Income (3-Mile)



Education (3-Mile)



Daytime Population (3-Mile)



Race (3-Mile)

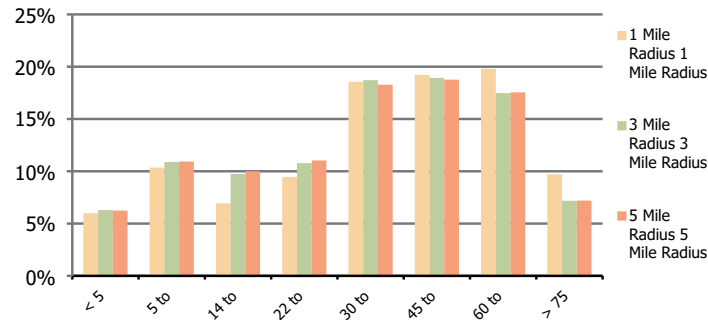
**Rivercrest Shopping Center**  
 Crestwood, IL

**1 Mile Radius**

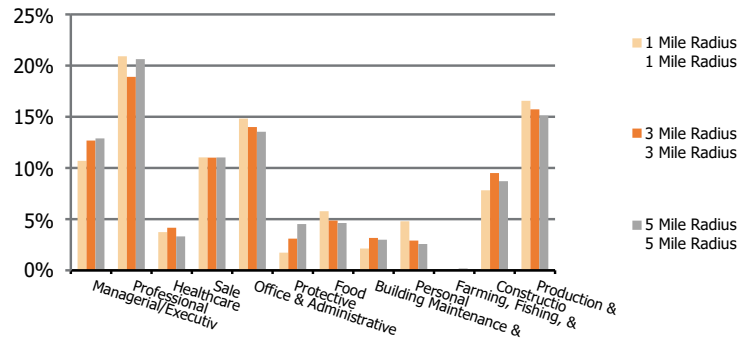
**3 Mile Radius**

**5 Mile Radius**

**Population by Age Range**



**Occupation**



<b>Population</b>	Current Estimated Population	7,679	84,969	289,522
	2010 Census Population	8,106	87,884	299,507
	2000 Census Population	8,545	87,134	301,813
	Historical Annual Growth 2000 to 2010	-0.5%	0.1%	-0.1%
	Estimated Annual Growth 2010 to 2020	-0.5%	-0.3%	-0.3%
	Projected Annual Growth 2020 to 2025	-0.6%	-0.6%	-0.6%
<b>Ethnic</b>	Hispanic or Latino Population	10%	16%	16%
	Non Hispanic or Latino Population	90%	84%	84%
<b>Race</b>	White	82.9%	74.1%	70.7%
	Black or African American	10.7%	15.5%	19.5%
	Asian & Pacific Islander	1.3%	1.7%	1.8%
	Other Races	5.2%	8.6%	8.1%