



# Demographic Summary Report

2000, 2010 Census, 2020 Estimates & 2025 Projections  
Calculated using TAS Retrieval

South Plaza Shopping Center California, MD	1 Mile Radius	3 Mile Radius	5 Mile Radius
---	---------------	---------------	---------------

## Current Year Demographics

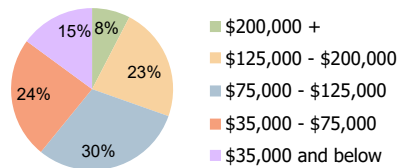
Current Population	4,726	23,317	50,026
Total Daytime Pop	4,774	20,630	56,817
Workplace Pop	1,997	10,523	33,140
Average Household Income	\$96,396	\$104,701	\$102,249
Average Disposable Income	\$78,386	\$84,319	\$80,620
Total Households	1,871	8,897	19,107
Median Home Value	\$332,044	\$351,331	\$360,427
College (4+)	41.7%	40.8%	35.8%
Total Consumer Spending/Capita (Weekly)	\$400	\$408	\$403
Population per Household	2.13	2.01	2.47
% of Households with Children	36.5%	35.9%	33.4%

## 2025 Demographic Projections

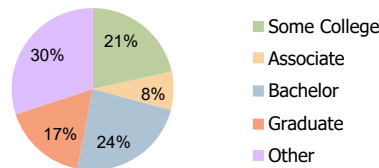
Projected Population	5,313	26,226	55,113
Projected 5 Year Annual Growth Rate (Pop)	2.4%	2.4%	2.0%

### Hispanic Ethnicity

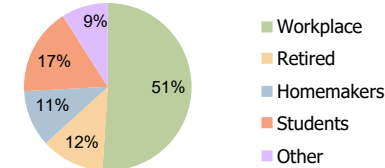
6% Hispanic | 94% Non Hispanic



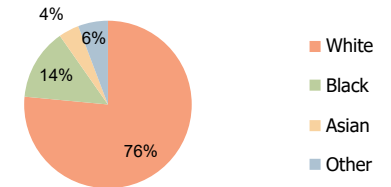
Household Income (3-Mile)



Education (3-Mile)



Daytime Population (3-Mile)



Race (3-Mile)

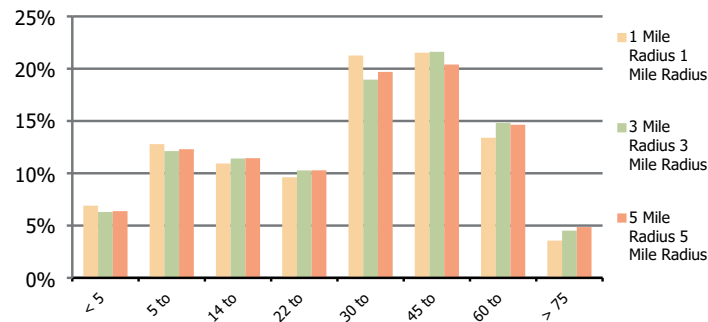
**South Plaza Shopping Center**  
California, MD

**1 Mile Radius**

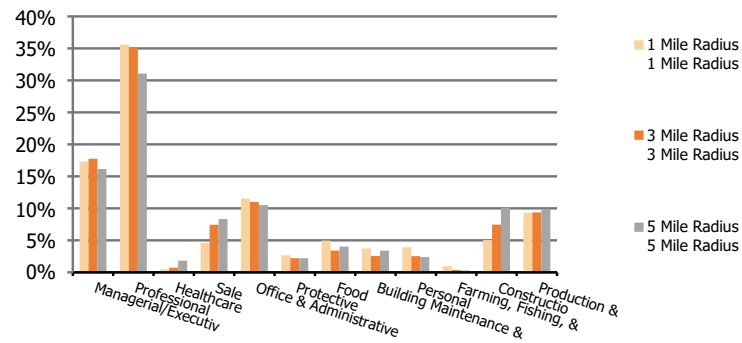
**3 Mile Radius**

**5 Mile Radius**

**Population by Age Range**



**Occupation**



<b>Population</b>	Current Estimated Population	4,726	23,317	50,026
	2010 Census Population	4,278	20,462	45,308
	2000 Census Population	2,580	15,031	36,170
	Historical Annual Growth 2000 to 2010	5.2%	3.1%	2.3%
	Estimated Annual Growth 2010 to 2020	1.0%	1.3%	1.0%
	Projected Annual Growth 2020 to 2025	2.4%	2.4%	2.0%
<b>Ethnic</b>	Hispanic or Latino Population	7%	6%	6%
	Non Hispanic or Latino Population	93%	94%	94%
<b>Race</b>	White	76.7%	76.5%	71.8%
	Black or African American	13.7%	13.8%	18.7%
	Asian & Pacific Islander	4.0%	4.0%	3.7%
	Other Races	5.7%	5.8%	5.8%