

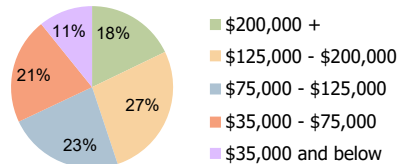
Superior Marketplace Superior, CO	1 Mile Radius	3 Mile Radius	5 Mile Radius
--------------------------------------	---------------	---------------	---------------

Current Year Demographics

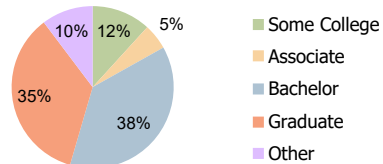
Current Population	3,847	35,575	94,603
Total Daytime Pop	7,274	39,452	121,980
Workplace Pop	4,596	20,530	66,616
Average Household Income	\$141,560	\$137,130	\$124,791
Average Disposable Income	\$107,656	\$106,513	\$96,097
Total Households	1,631	14,067	39,049
Median Home Value	\$694,043	\$730,248	\$693,734
College (4+)	71.6%	72.8%	69.1%
Total Consumer Spending/Capita (Weekly)	\$420	\$419	\$406
Population per Household	2.13	2.01	2.47
% of Households with Children	29.8%	36.1%	28.1%

2025 Demographic Projections

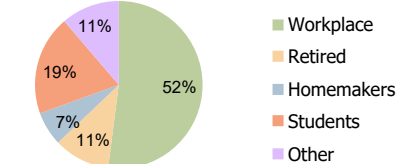
Projected Population	4,037	37,447	99,181
Projected 5 Year Annual Growth Rate (Pop)	1.0%	1.0%	0.9%



Household Income (3-Mile)



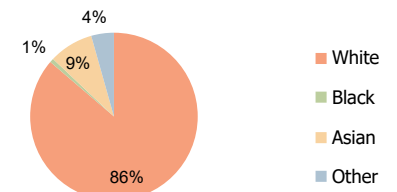
Education (3-Mile)



Daytime Population (3-Mile)

Hispanic Ethnicity

7% Hispanic | 93% Non Hispanic



Race (3-Mile)

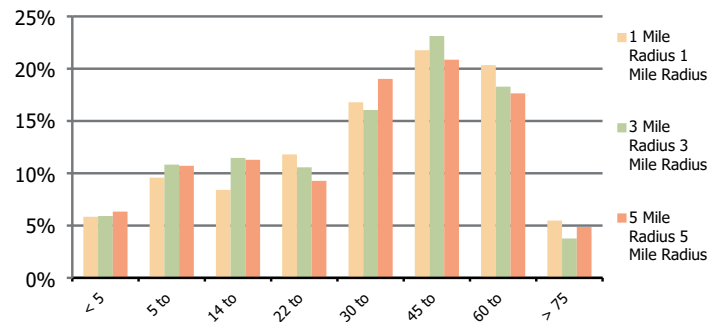
Superior Marketplace
 Superior, CO

1 Mile Radius

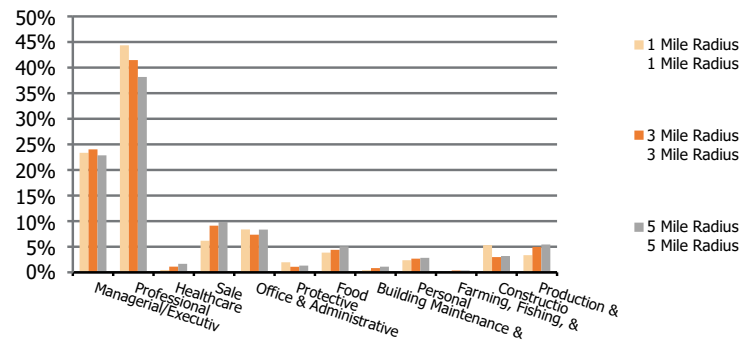
3 Mile Radius

5 Mile Radius

Population by Age Range



Occupation



Population	Current Estimated Population	3,847	35,575	94,603
	2010 Census Population	3,395	31,643	84,693
	2000 Census Population	3,455	28,560	78,613
	Historical Annual Growth 2000 to 2010	-0.2%	1.0%	0.7%
	Estimated Annual Growth 2010 to 2020	1.2%	1.1%	1.1%
	Projected Annual Growth 2020 to 2025	1.0%	1.0%	0.9%
Ethnic	Hispanic or Latino Population	6%	7%	8%
	Non Hispanic or Latino Population	94%	93%	92%
Race	White	87.4%	86.3%	87.6%
	Black or African American	0.7%	0.8%	0.9%
	Asian & Pacific Islander	8.3%	8.6%	6.2%
	Other Races	3.7%	4.4%	5.3%