

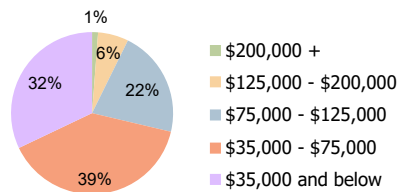
Sweetwater Village Austell, GA	1 Mile Radius	3 Mile Radius	5 Mile Radius
-----------------------------------	---------------	---------------	---------------

Current Year Demographics

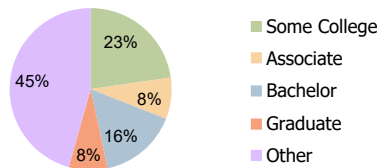
Current Population	5,584	42,494	115,180
Total Daytime Pop	9,106	51,547	118,791
Workplace Pop	7,487	29,817	57,135
Average Household Income	\$61,787	\$61,869	\$67,464
Average Disposable Income	\$47,414	\$51,983	\$56,015
Total Households	2,174	16,111	42,080
Median Home Value	\$175,355	\$181,437	\$201,071
College (4+)	22.2%	23.4%	25.2%
Total Consumer Spending/Capita (Weekly)	\$338	\$344	\$349
Population per Household	2.13	2.01	2.47
% of Households with Children	26.9%	33.3%	34.0%

2025 Demographic Projections

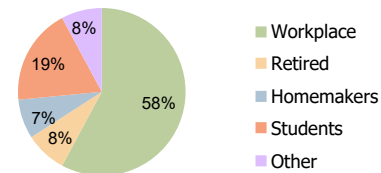
Projected Population	6,144	46,185	124,781
Projected 5 Year Annual Growth Rate (Pop)	1.9%	1.7%	1.6%



Household Income (3-Mile)



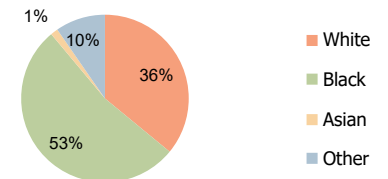
Education (3-Mile)



Daytime Population (3-Mile)

Hispanic Ethnicity

14% Hispanic | 86% Non Hispanic



Race (3-Mile)

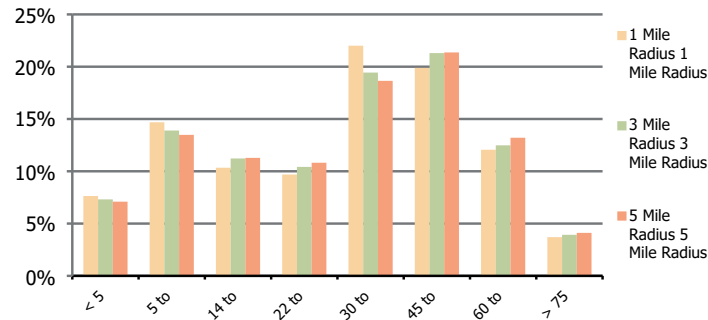


Demographic Summary Report

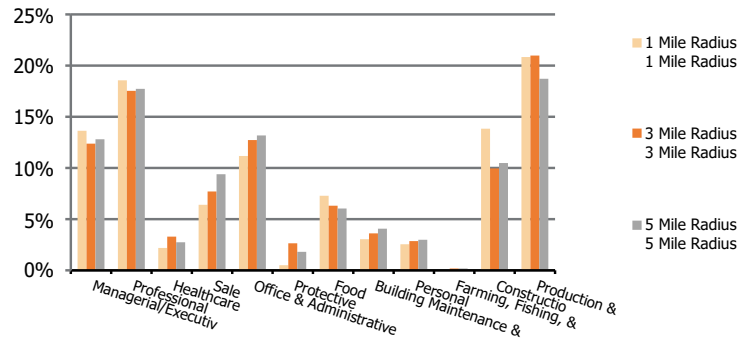
2000, 2010 Census, 2020 Estimates & 2025 Projections
 Calculated using TAS Retrieval

Sweetwater Village Austell, GA	1 Mile Radius	3 Mile Radius	5 Mile Radius
--	----------------------	----------------------	----------------------

Population by Age Range



Occupation



Population	Current Estimated Population	5,584	42,494	115,180
	2010 Census Population	5,101	38,796	104,583
	2000 Census Population	5,025	31,002	86,909
	Historical Annual Growth 2000 to 2010	0.1%	2.3%	1.9%
	Estimated Annual Growth 2010 to 2020	0.9%	0.9%	0.9%
	Projected Annual Growth 2020 to 2025	1.9%	1.7%	1.6%
Ethnic	Hispanic or Latino Population	16%	14%	14%
	Non Hispanic or Latino Population	84%	86%	86%
Race	White	40.2%	36.0%	37.7%
	Black or African American	47.9%	53.0%	51.4%
	Asian & Pacific Islander	1.8%	1.4%	1.5%
	Other Races	10.0%	9.6%	9.4%