



Demographic Summary Report

2000, 2010 Census, 2020 Estimates & 2025 Projections
 Calculated using TAS Retrieval

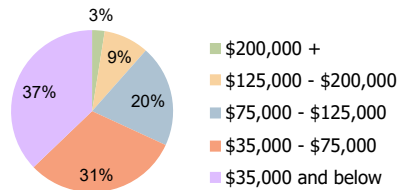
Western Village Cincinnati, OH	1 Mile Radius	3 Mile Radius	5 Mile Radius
-----------------------------------	---------------	---------------	---------------

Current Year Demographics

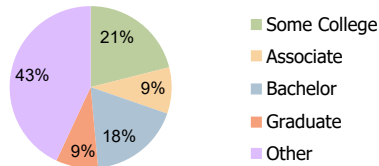
Current Population	15,905	101,763	214,121
Total Daytime Pop	13,333	74,774	179,112
Workplace Pop	6,329	23,976	56,424
Average Household Income	\$59,124	\$65,692	\$66,687
Average Disposable Income	\$48,876	\$53,920	\$54,578
Total Households	6,924	41,950	86,911
Median Home Value	\$140,035	\$155,673	\$164,984
College (4+)	23.1%	26.7%	27.1%
Total Consumer Spending/Capita (Weekly)	\$340	\$346	\$345
Population per Household	2.13	2.01	2.47
% of Households with Children	27.9%	28.5%	28.0%

2025 Demographic Projections

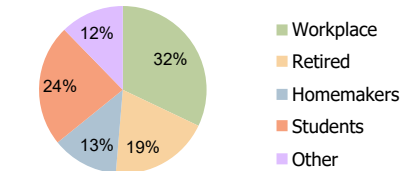
Projected Population	15,684	100,506	211,948
Projected 5 Year Annual Growth Rate (Pop)	-0.3%	-0.2%	-0.2%



Household Income (3-Mile)



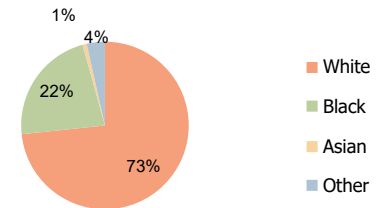
Education (3-Mile)



Daytime Population (3-Mile)

Hispanic Ethnicity

2% Hispanic | 98% Non Hispanic



Race (3-Mile)

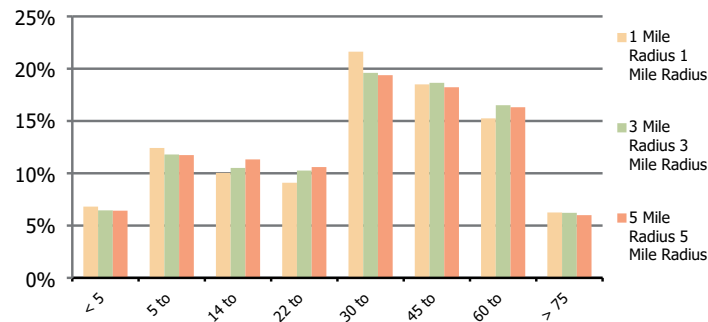
Western Village
Cincinnati, OH

1 Mile Radius

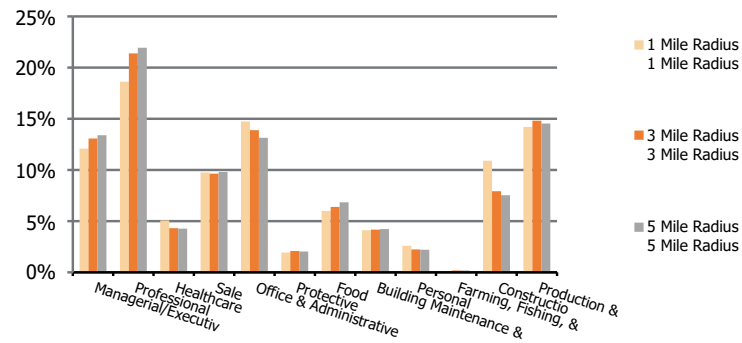
3 Mile Radius

5 Mile Radius

Population by Age Range



Occupation



Population	Current Estimated Population	15,905	101,763	214,121
	2010 Census Population	15,607	100,249	209,713
	2000 Census Population	15,832	103,892	223,719
	Historical Annual Growth 2000 to 2010	-0.1%	-0.4%	-0.6%
	Estimated Annual Growth 2010 to 2020	0.2%	0.1%	0.2%
	Projected Annual Growth 2020 to 2025	-0.3%	-0.2%	-0.2%
Ethnic	Hispanic or Latino Population	3%	2%	3%
	Non Hispanic or Latino Population	97%	98%	97%
Race	White	81.1%	73.3%	71.9%
	Black or African American	13.8%	22.4%	23.4%
	Asian & Pacific Islander	0.5%	0.8%	1.1%
	Other Races	4.5%	3.5%	3.7%